

HINGE MOUNTED TIRE CARRIER

18+ JEEP WRANGLER JL

TCJL-15



TOOLS REQUIRED

- T25, T40, T8, T55, T20 Torx Tool
- 12mm Allen Tool
- 13mm, 16mm, 21mm, 22mm Socket
- Rubber Mallet
- Preferred Cutting Tool
- Thread Locker
- Safety Glasses

SKILL LEVEL

- Novice/Intermediate
 - 1 (you) to 2 persons
- Little skill level required, you can easily install it by yourself however, additional help will be useful

TIME REQUIRED

- 4 Hours
- Time to install this should only take about four hours.

WARNINGS/CAUTIONS BEFORE STARTING INSTALLATION

Before you install this kit – Read and understand all instructions, warnings, cautions, and notes contained in this installation instruction guide. Consult your vehicle owner's manual for proper disconnection of electrical and lifting of vehicle if required for installation of this product.

This install may require some technical skills and knowledge of basic mechanical work. If you do not feel that you are capable of performing this install please take this product to a trained professional.

After reading this guide please contact us with any questions or concerns before installing product.
Customer Service: 855-680-9595

DV8 Offroad is not responsible for any bodily injury or harm to you or your vehicle as a result of an improper install.

Proper installation of this kit required knowledge of the factory recommended procedures for removal and installation of original equipment components. We recommend that the factory shop manual and any special tools needed to service your vehicle be on hand during the installation. Installation of this kit without proper knowledge of the factory recommended procedures may affect the performance of these components and the safety of the vehicle

- Always wear eye protection when operating power tools

Inspect all contents of this package to make sure product is not damaged and all installation hardware has been included. If parts are missing from kit, please be prepared to provide the following information

1. Name of purchase location
2. Bar Code on side of box
3. Date above bar code
4. Date inside box cover



INSTALLATION MANUAL

Begin by unpacking all items and inspecting for missing pieces or damage. If you have any concerns, please contact the company the product was purchased from. Extra hardware may be included with the product.

HARDWARE INCLUDED

- | | |
|-------------------------|--------------------------------|
| (2) M14x35mm Hex Bolts | (6) M12 Nylon Lock Nuts |
| (2) M14 Nylon Lock Nuts | (6) M12x35mm Hex Bolts |
| (4) M14 Flat Washers | (3) M10x30mm Countersunk Bolts |
| (8) M8x35mm Hex Bolts | (3) M10 Nylon Lock Nuts |
| (8) M8 Split Washers | (3) M10 Flat Washers |
| (8) M8 Flat Washers | (1) M6x14mm Allen Bolts |
| (4) M10x45mm Bolts | (1) M6 Washers |
| (4) M10 Split Washers | (1) M6 Split Washers |
| (4) M10 Flat Washers | (2) Rubber Plugs |
| (12) M12 Flat Washers | |



STEP 1 | Remove the spare tire if you have one installed.

Use a 13mm socket to remove the bottom (6) bolts from the factory spare tire carrier.



STEP 2 | Use a T25 torx bit to remove the hardware securing the third brake light to the tire carrier.



INSTALLATION MANUAL

STEP 3 | Loosen the remaining hardware on the passenger side and remove the hardware on the passenger side, allowing the tire carrier to drop and rotate slightly to the passenger side.

Remove the third brake light and gently set it on the bumper.

Use a zip tie to secure it to the tailgate handle to ensure it does not fall, or pull on the wiring.



INSTALLATION MANUAL

STEP 4 | Use a T25 torx bit to remove the two bolts securing the stud plate to the tire carrier.

Then, using a rubber mallet, remove the stud plate.

Use the mallet with caution, taking care not to damage the carrier or vehicle paint.



INSTALLATION MANUAL

STEP 5 | Remove the factory carrier and set it off the side.

Note: The factory carrier will not be reused.



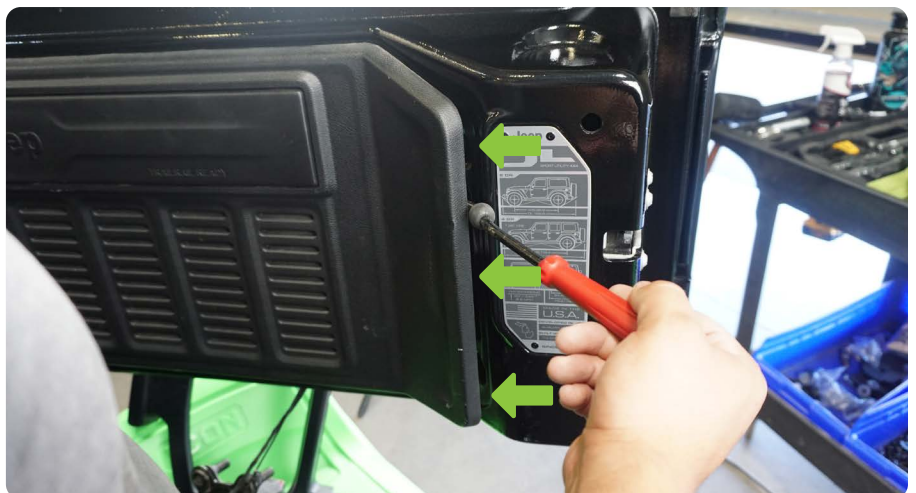
STEP 6 | Open the tailgate and use a T40 torx tool to remove the torx head bolt that secures the tailgate check cable.



STEP 7 | Use a trim clip tool to remove the plastic panel from the tail gate.

Clips are located along each edge.

Pull straight away from the tailgate to avoid breaking any clips.



INSTALLATION MANUAL



STEP 8 | Unclip all three plugs to the camera, third brake light and tailgate door handle.



STEP 9 | Remove the fin vents by pulling from the exterior, while using a trim clip tool on the interior if necessary.





STEP 10 | Using a dremel or cutting tool of choice, remove the three sided border from the fin vents.

Then use a file to clean up any rough edges.

Reinstall the vents back into the tailgate.



STEP 11 | Use a T8 torx bit to remove the camera from the factory carrier, disconnect it by pressing the release tab on the connector.

Place the camera off to the side on a soft surface being careful not to scratch/ damage it.





STEP 12 | If your vehicle is equipped with the newer camera style shown, depress the camera from the camera mount, unplug the camera harness and set everything off to the side.



STEP 13 | Use a T55 torx tool to remove the (4) tailgate hinge bolts.

Tech Tip: Assistance required to hold the tailgate from falling and sustaining damage.

Set the tailgate off to the side.



INSTALLATION MANUAL

STEP 14 | Pull the tailgate seal from the pinch weld as shown. (Do not completely remove)



STEP 15 | Use a T20 torx tool to remove the factory torx head bolt that secures the rear trim panel/sub-woofer.

Use a trim tool to remove the plastic trim cap.



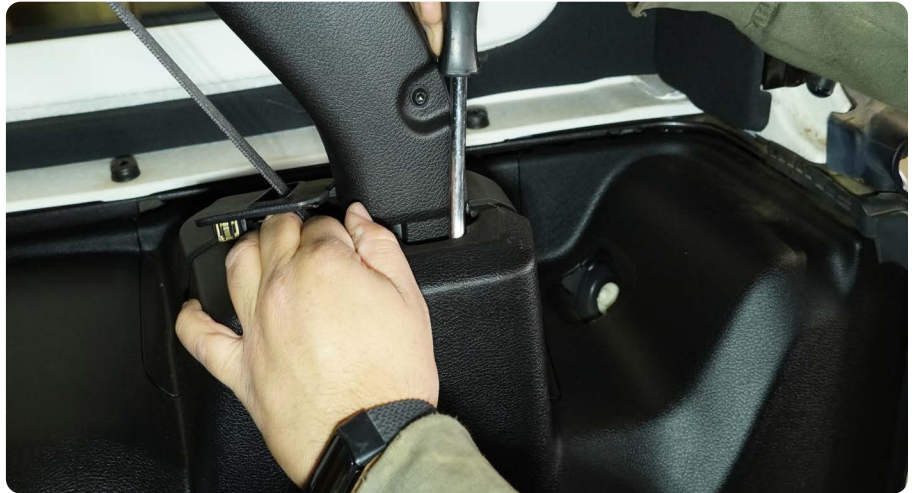
INSTALLATION MANUAL

STEP 16 | Use a trim tool to remove the seatbelt cover.



STEP 17 | Use the trim tool to separate the panels at their parting line.

With a firm grip, carefully start separate the plastic trim panel from the vehicle.



STEP 18 | Open the rear storage compartment and remove the tire jack/ tool compartment cover.

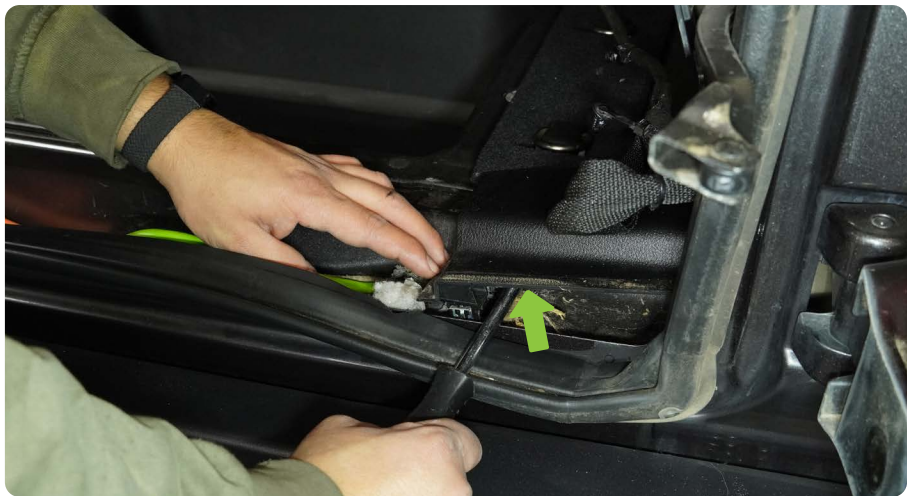


INSTALLATION MANUAL

STEP 19 | Use a trim tool to pry loose the lower trim panel clips.



STEP 20 | Use the trim tool to pry the panels last clip.

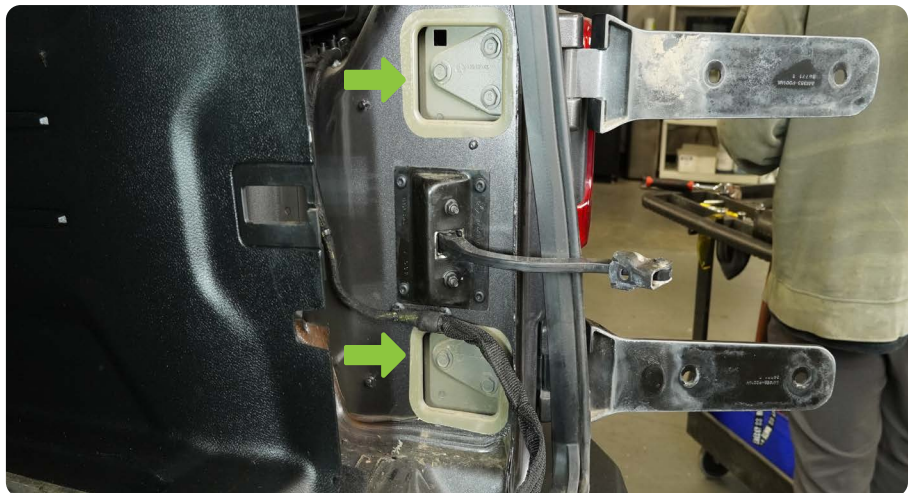




STEP 21 | Remove the factory hing cover stickers to gain access to the (6) hinge bolts.



STEP 22 | Use a 13mm socket to remove the (6) factory hinge bolts. Set the factory hinges off to the side, they will not be reused.



INSTALLATION MANUAL

STEP 23 | Place the provided foam piece onto each of the DV8 hinges as shown.



STEP 24 | Before mounting the DV8 hinges, place a small amount of blue thread locker to each of the (6) factory hinge bolts.



STEP 25 | Install the DV8 hinges using a 13mm socket and the factory hinge bolts. Tighten the bolts so they are snug.

Place the hinge with the square cam stop at the top hinge position.



INSTALLATION MANUAL

STEP 26 | Place the tailgate loosely onto the vehicle, using the door latch to keep the door in place.

Tech tip: Use some cardboard at the bottom to keep the door from falling/damage to the paint.



STEP 27 | While holding the metal sleeves in the tire carriers bushings mount the tire carrier to the hinges.

Use the provided M14 hex bolt and nylon lock nuts to loosely secure the tire carrier to the hinges on the bottom.

Thread the top M14 allen bolt through the provided cam nut first than through the tire carriers metal bushing sleeve.

Use (2) M14 washers per bolt. (1) Washer for the hex bolt side and the other for the nylon lock nut side



INSTALLATION MANUAL

STEP 28 | Place the provided peel-n-stick foam onto the back of the DV8 tire carrier as shown.

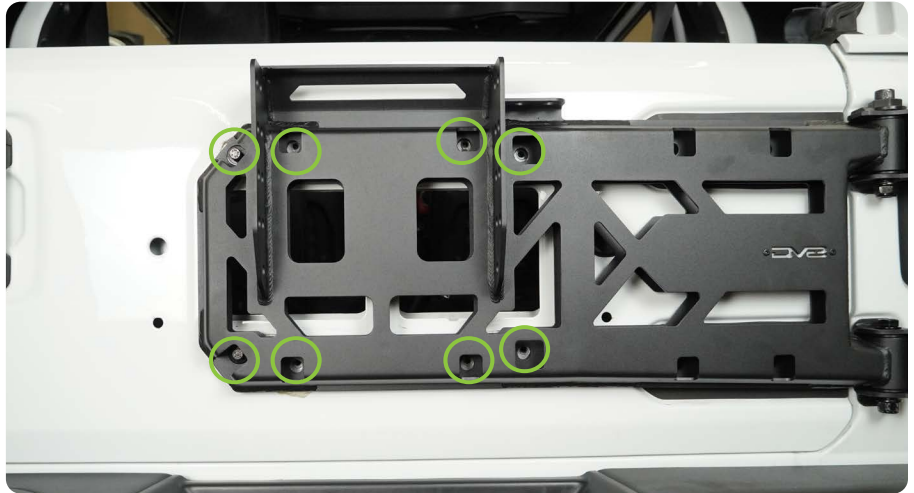


INSTALLATION MANUAL

STEP 29 | Close the tire carrier, align the mounting holes in the tire carrier with the threaded holes in the tailgate.

Loosely secure the tire carrier to the tailgate using the provided (8) M8x35mm hex head bolts using a 13mm socket.

Use (1) M8 split washer and (1) M8 flat washer per bolt.



STEP 30 | Center the tire carrier with the tailgate, Use the provided (4) M10 hex bolts and a 16mm socket to secure the tire carrier to the tailgate.

Use (1) M10 split washer and (1) M10 flat washer per bolt.

Secure all (8) M8 bolts.



INSTALLATION MANUAL

STEP 31 | Set the cam bolt to “0”. This is where the smallest edge around the hex part of the cam is closest to the cam stop. Open the tailgate carefully, check for any sagging of the tailgate.

If the tailgate sags use the provided shims as needed to adjust the tailgate to prevent the tailgate from sagging.

Place the shims behind the lower tailgate hinge as shown. Secure the shims and lower tailgate hinge using the factory hinge bolts.

Continue adjusting gate until you have even gaps on the driver and passenger side and the carrier does not sag with any added weight. Once you add weight, you may experience some sag but we will adjust the cam nut later to fix that.



INSTALLATION MANUAL

STEP 32 | If your vehicle was equipped with 35" tires from factory you will need to use the DV8 TCJL-EXT so that your rear camera is not obstructed by the spare tire.



STEP 33 | Install the factory rear camera/camera housing and wheel stud plate on to the DV8 tire mount as shown.

Use the factory bolts and a T25 to secure the camera housing and wheel stud plate to the DV8 tire mount.



INSTALLATION MANUAL

STEP 34 | Place the camera housing cover on to the tire mount.

Using the provided M10 countersunk hardware, a #6 allen tool and an 17mm socket, secure the camera housing cover to the tire mount.

Note: For this install we are using TCJL-EXT.



INSTALLATION MANUAL

STEP 35 | Mount the factory third brake light to the DV8 tire mount using the factory hardware and a T25 torx tool.

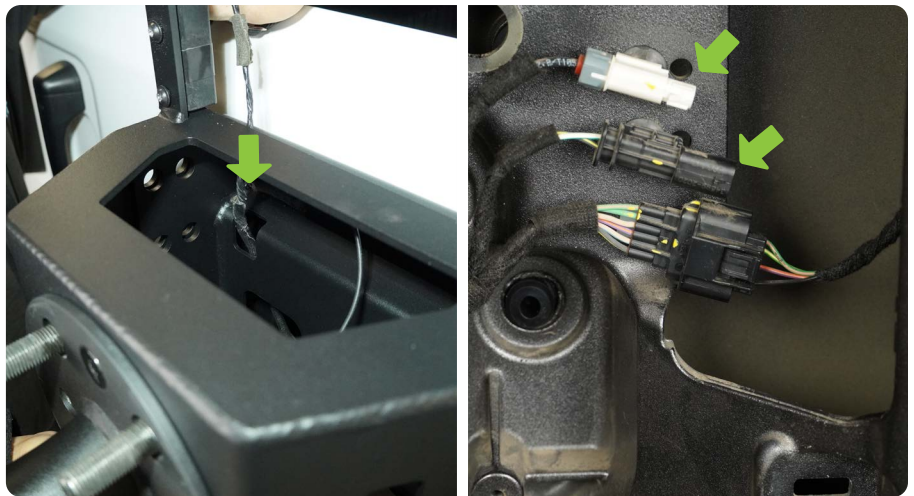


STEP 36 | Mount the DV8 tire mount onto the DV8 hinge/tailgate bracket. Using the provided M12 hardware, an 18mm socket and a 19mm socket, secure the tire mount in place.

Note: the height of the tire mount can be adjusted for larger tire diameters. For this install we installed a 37x12.50x17.



STEP 37 | Route the camera wiring harness/third brake light harness through the tire carrier and through the tailgate vents. Reconnect the rear camera and third bracket light electrical plugs.



INSTALLATION MANUAL

STEP 38 | Mount your spare tire and open the tailgate and check for tailgate sagging.

If your tailgate sags adjust the cam bolt as needed using a wrench to stop the tailgate from sagging.

As you adjust the cam bolt, watch the body panel gaps to ensure they are even.



STEP 39 | Double check that all hardware is secure.

Congratulations, installation of the DV8 hinge mounted tire carrier is now complete.

