

TCGL-02

Jeep Gladiator JT

In-Bed Stand Up Tire Carrier



WARNINGS/CAUTIONS BEFORE STARTING INSTALLATION

Before you install this kit – Read and understand all instructions, warnings, cautions, and notes contained in this installation instruction guide. Consult your vehicle owner's manual for proper disconnection of electrical and lifting of vehicle if required for installation of this product.

This install may require some technical skills and knowledge of basic mechanical work. If you do not feel that you are capable of performing this install please take this product to a trained professional.

After reading this guide please contact us with any questions or concerns before installing product.
Customer Service: 855-680-9595

DV8 Offroad is not responsible for any bodily injury or harm to you or your vehicle as a result of an improper install.

Proper installation of this kit requires knowledge of the factory recommended procedures for removal and installation of original equipment components. We recommend that the factory shop manual and any special tools needed to service your vehicle be on hand during the installation. Installation of this kit without proper knowledge of the factory recommended procedures may affect the performance of these components and the safety of the vehicle.

• *Always wear eye protection when operating power tools.* •

Inspect all contents of this package to make sure product is not damaged and all installation hardware has been included. If parts are missing from kit, please be prepared to provide the following information:

1. Name of purchase location
2. Bar Code on side of box
3. Date above bar code
4. Date inside box cover

INSTALLATION MANUAL

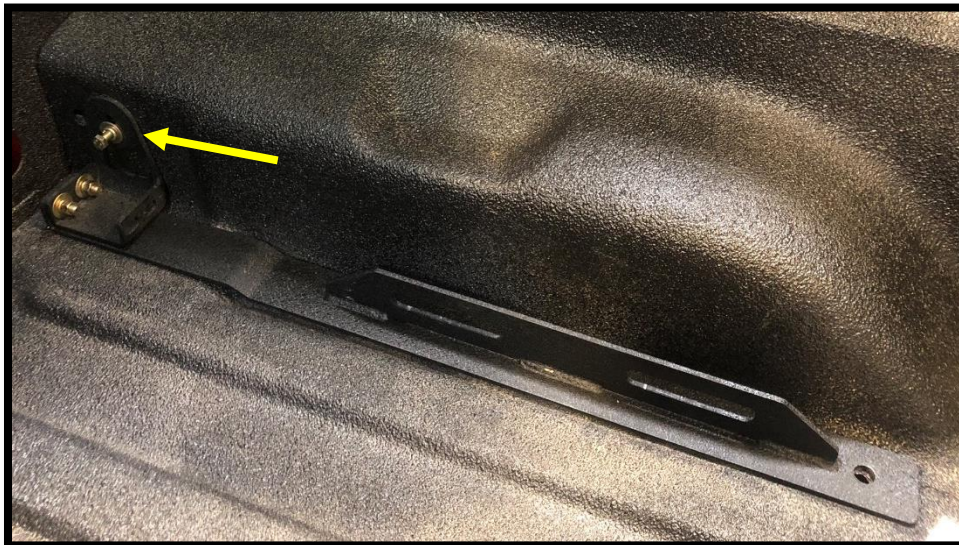
1. Begin by opening all packaged items and inspecting them for damage or missing items. Contact the company you purchased the item from if there are any concerns. (NOTE: This requires the use of the Jeep "Trail Rail Management System")
2. Depending on the side of the vehicle you intend to mount the TCGL-02, reference images below for the layout of the lower floor bracket.



3. Bolt the two above brackets together using supplied M10 hardware. Leave all hardware loose until the end.



4. Move the lower bottom bracket in place. In the side of the JT, you have two holes, a threaded and non-threaded. Using the supplied hardware, loosely thread lower bottom bracket into side of bed.



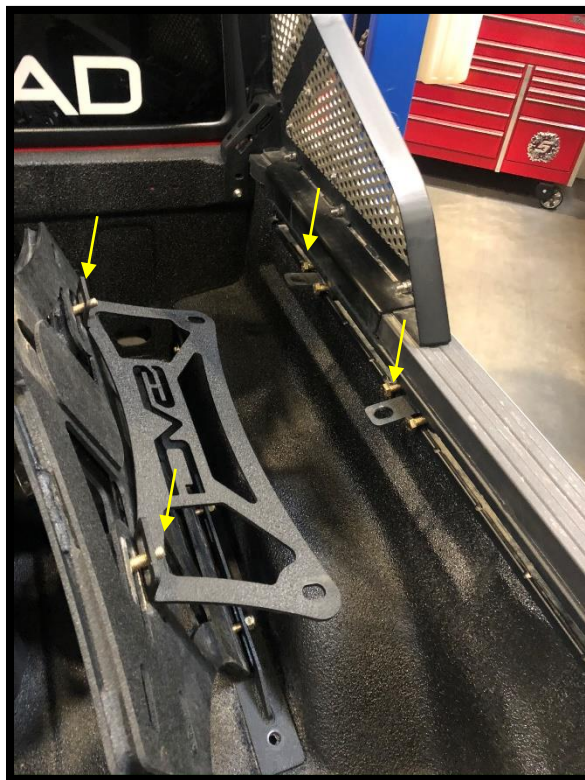
5. Next, install the two slide brackets into the rail. You will need to use the large access hole in the front to fit the mounts into the rail. Ensure you use supplied hardware as shown in the image. These will be tightened later to keep slide mounts into place.



- Using the provided hardware, mount the main carrier to the lower bottom bracket. Keep carrier loose at this point.



- Once carrier is loosely attached to the lower bottom bracket, attached the rail bracket to the carrier and the two slide brackets.



8. Maneuver carrier into desired position and tighten all hardware. Ensure to tighten slide bracket bolts to lock position. After ALL hardware is secure, mark hole at end of lower bottom bracket. Drill $\frac{1}{2}$ " hole and secure with bolt and nut. (Drilled stability hole recommended for 35" or larger tires)



9. To mount tire, insert threaded post into carrier from the exterior facing to the interior. Place tire onto post and place cone facing wheel followed by round plate and T-handle. As you are tightening the T-handle, place your foot on the wheel and press tire into bed as you tighten the carrier.

