

Bed Protection Skid

2020+ JEEP GLADIATOR

SRGL-01



TOOLS REQUIRED

- Ratchet
- 16mm Socket
- 18mm Socket

SKILL LEVEL

- Novice/Intermediate
- 1 (you) to 2 persons

Little skill level required, you can easily install it by yourself however, additional help will be useful

TIME REQUIRED

- Approximately: 1.5 Hours

Time to install this should only take approximately 1.5 hours.

WARNINGS/CAUTIONS BEFORE STARTING INSTALLATION

Before you install this kit – Read and understand all instructions, warnings, cautions, and notes contained in this installation instruction guide. Consult your vehicle owner's manual for proper disconnection of electrical and lifting of vehicle if required for installation of this product.

This install may require some technical skills and knowledge of basic mechanical work. If you do not feel that you are capable of performing this install please take this product to a trained professional.

After reading this guide please contact us with any questions or concerns before installing product.
Customer Service: 855-680-9595

DV8 Offroad is not responsible for any bodily injury or harm to you or your vehicle as a result of an improper install.

Proper installation of this kit required knowledge of the factory recommended procedures for removal and installation of original equipment components. We recommend that the factory shop manual and any special tools needed to service your vehicle be on hand during the installation. Installation of this kit without proper knowledge of the factory recommended procedures may affect the performance of these components and the safety of the vehicle

- Always wear eye protection when operating power tools

Inspect all contents of this package to make sure product is not damaged and all installation hardware has been included. If parts are missing from kit, please be prepared to provide the following information

1. Name of purchase location
2. Bar Code on side of box
3. Date above bar code
4. Date inside box cover



INSTALLATION MANUAL

STEP 1

Begin by unpacking all items and inspecting for missing pieces or damage. If you have any concerns, please contact the company the product was purchased from.

Hardware Included:

- | | |
|-----------------------|----------------------|
| (12) M12x35 Bolts | (6) M10x35 Bolts |
| (12) M12 Flat Washers | (6) M10 Flat Washers |
| (12) M12 Lock washers | (6) M10 Lock Washers |

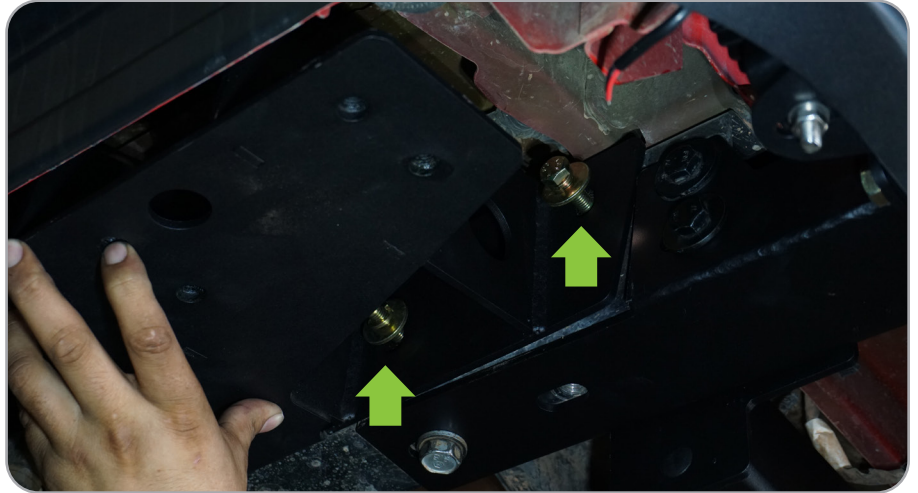


STEP 2

Using a 16mm socket and provided M10x35 hardware, line up the bracket to the frame and loosely install the first two bolts closest the rear bumper.

NOTE: All brackets included are directional and will only fit properly on a specific side of the vehicle. Take note of the orientation of our brackets during installation.





STEP 3

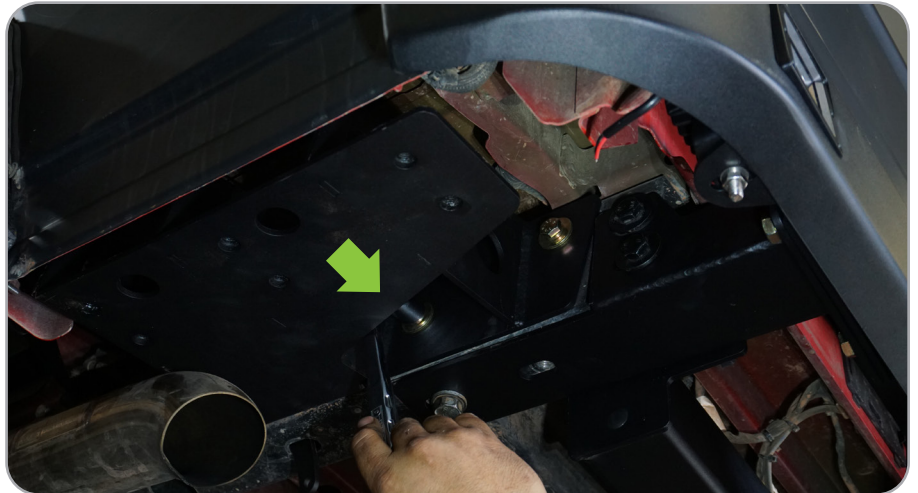
Install the third M10 bolt by placing the provided nutplate inside the frame through the opening in the bottom of the frame.



INSTALLATION MANUAL

STEP 4

Secure the bolts with a 16mm socket.



STEP 5

Attach the slider to the rail bracket using an 18mm socket and provided M12 hardware.

NOTE: One of the bolts is obstructed by the exhaust and it may be necessary to hold it out of the way and use a 18mm wrench. An extra pair of hands will make this process easier.





STEP 6

Repeat steps 1-5 on the other side of the vehicle.

STEP 7

Check fitment against body and that the sliders are not making contact. Ensure all hardware is secure.

