

SWAY BAR DISCONNECT SKID PLATE

18+/20+ JL/JT WRANGLER/GLADIATOR

SPJL-02



TOOLS REQUIRED

- 16mm Socket
- 10mm Socket
- Rubber Mallet
- 57-76mm Hose Clamp
- 10" Extension (Mojave Only)

SKILL LEVEL

- Novice/Intermediate
 - 1 (you) to 2 persons
- Little skill level required, you can install it by yourself however additional help is recommended.

TIME REQUIRED

- 1 Hour
- Time to install this should only take about an hour

WARNINGS/CAUTIONS BEFORE STARTING INSTALLATION

Before you install this kit – Read and understand all instructions, warnings, cautions, and notes contained in this installation instruction guide. Consult your vehicle owner's manual for proper disconnection of electrical and lifting of vehicle if required for installation of this product.

This install may require some technical skills and knowledge of basic mechanical work. If you do not feel that you are capable of performing this install please take this product to a trained professional.

After reading this guide please contact us with any questions or concerns before installing product.
Customer Service: 855-680-9595

DV8 Offroad is not responsible for any bodily injury or harm to you or your vehicle as a result of an improper install.

Proper installation of this kit required knowledge of the factory recommended procedures for removal and installation of original equipment components. We recommend that the factory shop manual and any special tools needed to service your vehicle be on hand during the installation. Installation of this kit without proper knowledge of the factory recommended procedures may affect the performance of these components and the safety of the vehicle

- Always wear eye protection when operating power tools

Inspect all contents of this package to make sure product is not damaged and all installation hardware has been included. If parts are missing from kit, please be prepared to provide the following information

1. Name of purchase location
2. Bar Code on side of box
3. Date above bar code
4. Date inside box cover



INSTALLATION MANUAL

Begin by unpacking all items and inspecting for missing pieces or damage. If you have any concerns, please contact the company the product was purchased from. Extra hardware may be included with the product.

HARDWARE INCLUDED

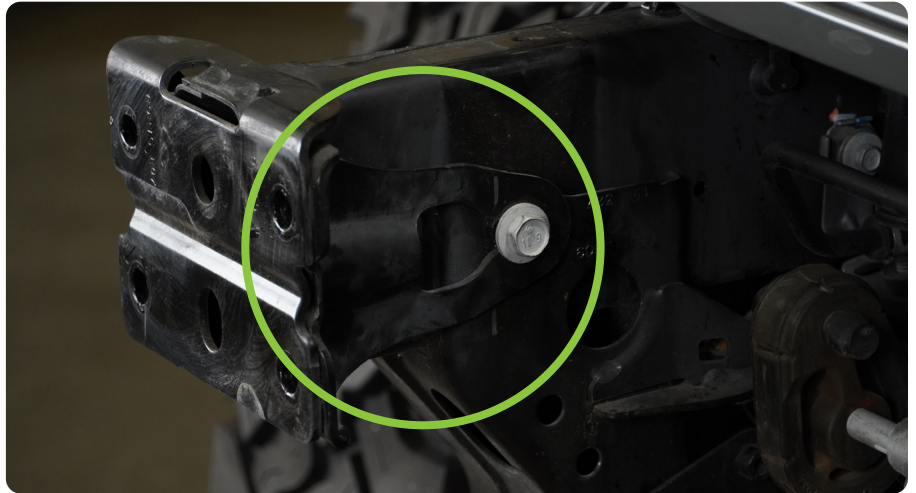
- (2) Nut Plates
- (4) M10x35 Hex
- (4) M10 Flat Washer
- (4) M10 Spring Washer



STEP 1 | Prior to installing the SPJL-02 skid plate, it is necessary to check for the presence of these support braces for the bumper mounts.

If your aftermarket bumper did not require the removal of these braces during installation, it will be necessary to remove them and re-install your bumper prior to installation of the skid plate. Keep the factory hardware for re-use when installing the skid plate.

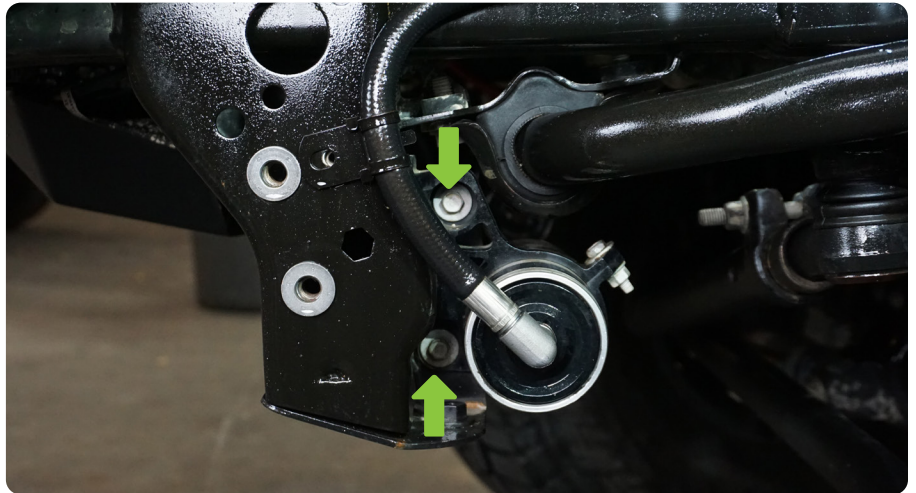
The required tool for removal of this hardware is a 16mm socket.



INSTALLATION MANUAL

STEP 2 | If installing on a Mojave, remove the Fox shock reservoir using a 10mm socket.

Remove the shock reservoir mount from the shock and discard, it will not be reused. Use a 10mm socket.



STEP 3 | Remove the lower frame cap using a 16mm socket to remove both factory bolts.



INSTALLATION MANUAL

STEP 4 | Mojave Owners: We recommend 57-76mm hose clamps to secure the shock to the skid plate.

Loosely secure the clamp at this time ensuring the bolt head is facing the access hole as shown.



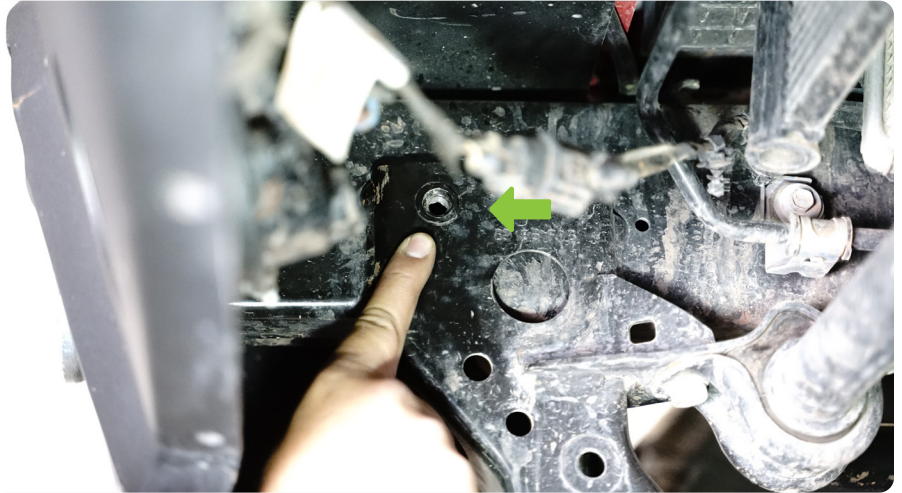
INSTALLATION MANUAL

STEP 5 | The top mounting hole for the skid plate will be threaded on all trim levels.

Inspect the bottom two mounting holes. They may or may not have nutserts installed depending on trim level.

If your vehicle has nutserts installed, congrats, this install is even more simple. Remove the factory hardware using a 16mm socket and set it to the side for re-use during installation.

If you do not have nutserts, it will be necessary to use the provided hardware and nut plate.



STEP 6 | Position the skid plate into place.

We recommend additional help to hold the plate in place, while you position the nut plates and loosely secure hardware.

If you have factory nutserts, use the factory hardware to loosely secure the skid plate.

Use a rubber mallet if necessary to manipulate the skid plate.

Note: Assistance is recommended to prevent injury and damage to the product or vehicle.



INSTALLATION MANUAL

STEP 7 | If you are using provided nut plates--- position the skid plate on the vehicle and then place the nut plates inside the frame and line it up with the mounting holes. The flat section of the nut plate should be resting against the inside of the frame.

Thread hardware into the nut plates by hand until they are loosely secure.

Then loosely install any remaining hardware.

Note: Assistance is recommended to prevent injury and damage to the product or vehicle.

Tip: If you are using nutplates--- it may be helpful to install the uppermost bolt first, so the skid plate is helping to support its own weight while positioning the nut plates.



INSTALLATION MANUAL

STEP 8 | Once all hardware is loosely threaded, secure it using a 16mm socket.

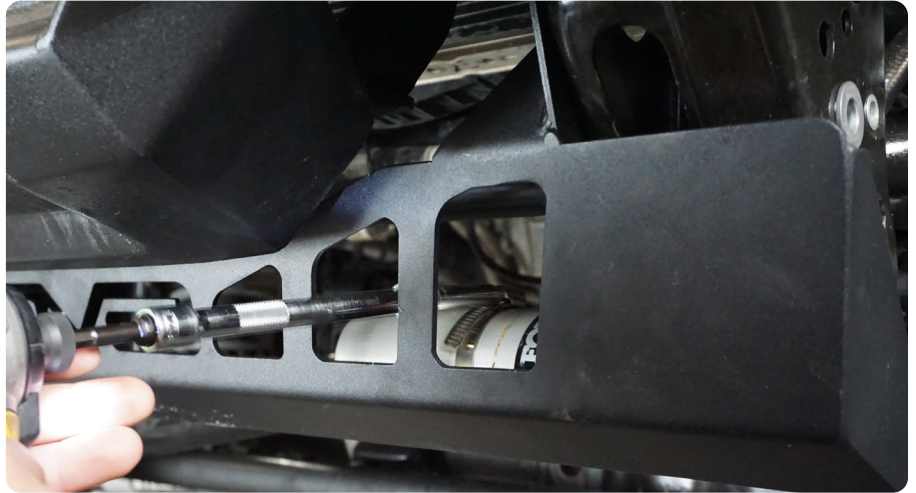


STEP 9 | Route the shock reservoir behind the frame into the reservoir clamp previously installed onto the skid plate.



INSTALLATION MANUAL

STEP 10 | Secure the reservoir clamps using the necessary socket/ 10" extension combo.



STEP 11 | Double Check fitment and all hardware is secure.

Congrats! You are finished with the install of the 18+/20+ JL/JT Wrangler/ Gladiator Sway Bar Disconnect Skid Plate

