

## A-Arm Skid Plate

2021+ BRONCO

SPBR-02



### TOOLS REQUIRED

- #5 Allen Head
- 18mm Socket

### SKILL LEVEL

- Novice/Intermediate
- 1 persons

Little skill level required, you can easily install it by yourself.

### TIME REQUIRED

- 1 Hour

Time to install this should only take about an hour

## WARNINGS/CAUTIONS BEFORE STARTING INSTALLATION

Before you install this kit – Read and understand all instructions, warnings, cautions, and notes contained in this installation instruction guide. Consult your vehicle owner’s manual for proper disconnection of electrical and lifting of vehicle if required for installation of this product.

This install may require some technical skills and knowledge of basic mechanical work. If you do not feel that you are capable of performing this install please take this product to a trained professional.

After reading this guide please contact us with any questions or concerns before installing product.  
Customer Service: 855-680-9595

*DV8 Offroad is not responsible for any bodily injury or harm to you or your vehicle as a result of an improper install.*

Proper installation of this kit required knowledge of the factory recommended procedures for removal and installation of original equipment components. We recommend that the factory shop manual and any special tools needed to service your vehicle be on hand during the installation. Installation of this kit without proper knowledge of the factory recommended procedures may affect the performance of these components and the safety of the vehicle

- Always wear eye protection when operating power tools

*Inspect all contents of this package to make sure product is not damaged and all installation hardware has been included. If parts are missing from kit, please be prepared to provide the following information*

1. Name of purchase location
2. Bar Code on side of box
3. Date above bar code
4. Date inside box cover



# INSTALLATION MANUAL

## STEP 1

Begin by unpacking all items and inspecting for missing pieces or damage. If you have any concerns, please contact the company the product was purchased from.

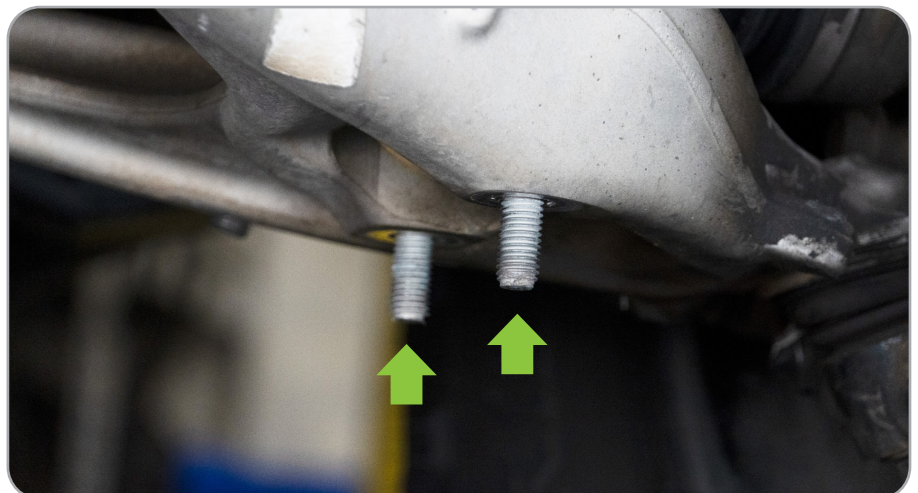
### Hardware Included:

- (4) M8x90mm Bolts
- (4) M8 Locking Nuts
- (8) M8 Flat Washers



## STEP 2

For this install, the Bronco needs to have all the weight on the tires/suspension to ensure shock does not move. Using a 18mm socket, remove both lower shock bolts.



# INSTALLATION MANUAL

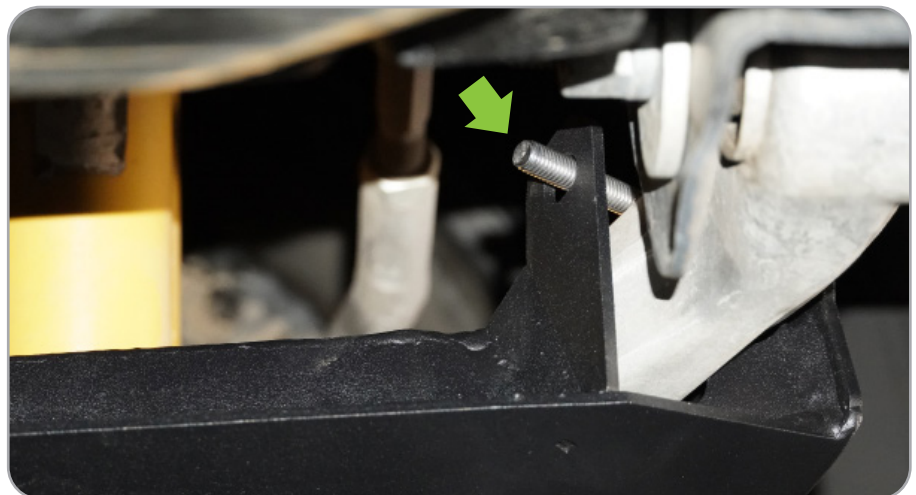
## STEP 3

Hold up the A-arm skid plate aligning the two studs with the holes on the skid plate. Loosely install factory hardware onto studs.



## STEP 4

Raise the skid plate so the two ears surround each arm of the A-arm near the center of the vehicle. Using the provided M8 hardware, loosely install bolts over each arm.





# INSTALLATION MANUAL

---

## STEP 5

Tighten factory shock nuts to 66 ft-lbs. Tighten M8 bolts with a #5 allen head until secure and repeat on opposite side.

*Note: If you are running aftermarket shocks, your torque specs may vary.*

