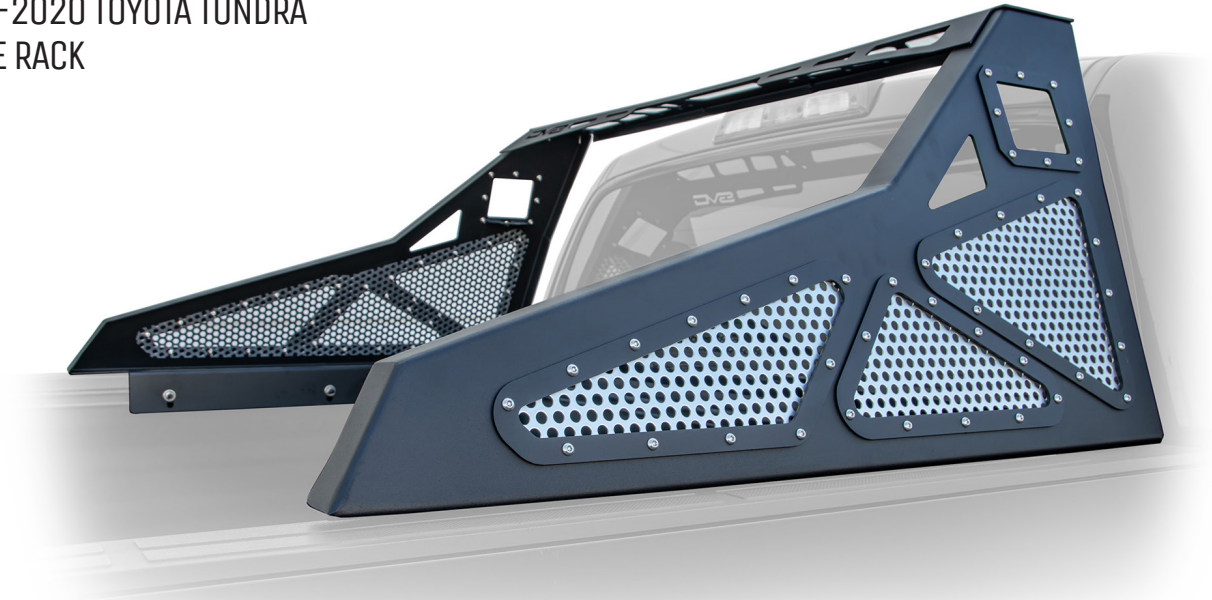


**RRTT2-01**  
2007-2020 TOYOTA TUNDRA  
CHASE RACK



**TOOLS REQUIRED**

- H5 head socket
- 13mm socket or wrench
- Appropriate ratchet for sockets
- Safety Glasses

**SKILL LEVEL**

- Novice
  - 2 persons, you and a buddy
- Little skill level required, you and a buddy can easily install it with little effort

**TIME REQUIRED**

- 30-45 min.
- Time to install this rack should only take 30 to 45 minutes with help.

**WARNINGS/CAUTIONS BEFORE STARTING INSTALLATION**

**Before you install this kit – Read and understand all instructions, warnings, cautions, and notes contained in this installation instruction guide. Consult your vehicle owner’s manual for proper disconnection of electrical and lifting of vehicle if required for installation of this product.**

This install may require some technical skills and knowledge of basic mechanical work. If you do not feel that you are capable of performing this install please take this product to a trained professional.

After reading this guide please contact us with any questions or concerns before installing product.  
Customer Service: 855-680-9595

*DV8 Offroad is not responsible for any bodily injury or harm to you or your vehicle as a result of an improper install.*

Proper installation of this kit requires knowledge of the factory recommended procedures for removal and installation of original equipment components. We recommend that the factory shop manual and any special tools needed to service your vehicle be on hand during the installation. Installation of this kit without proper knowledge of the factory recommended procedures may affect the performance of these components and the safety of the vehicle.

• *Always wear eye protection when operating power tools.* •

*Inspect all contents of this package to make sure product is not damaged and all installation hardware has been included. If parts are missing from kit, please be prepared to provide the following information:*

1. Name of purchase location
2. Bar Code on side of box
3. Date above bar code
4. Date inside box cover



# INSTALLATION MANUAL

**STEP 1:** In the box you will find...rack top, rack right and left sides, bed mounts, and all mounting hardware.

**STEP 2:** Attach the rack top to the sides using the 4 bolts, washers, split washers, and nuts - 2 on each side. Tighten the bolts using an H5 head socket, and 13mm socket or wrench for the nut. See steps 2A, and 2B



**STEP 3:** There are two possible ways to mount the chase rack to the bed.

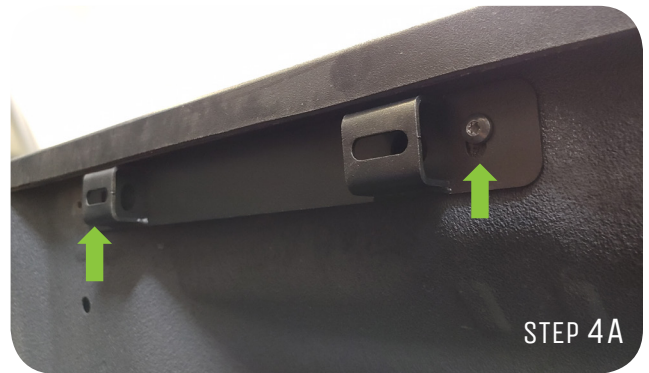
**Option 1:** Your Tundra has stock mounting holes in which case use the supplied rack mounts as seen in Step 3A. - **Jump to Step 4A**

**Option 2:** Your Tundra has genuine bed tie down rails installed as seen in Step 3B. - **In this case jump to Step 5A**

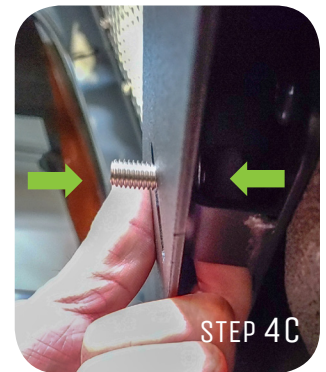


# INSTALLATION MANUAL

**STEP 4A:** Locate the 2 mounting holes toward the front of the bed just under the lip. Using the supplied hardware mount the rack mount to the bed securely. Repeat the process to the other side.



**STEP 4B:** With your buddies help set the chase rack in place so the holes line up. Holding the bolt on in place with your finger, slide the rack in place and now hold with you index finger and thumb. Seen in Step 4C



**STEP 4D:** Using the supplied washers, split washers, and 13mm nuts, tighten finger tight. Repeat on the other side. Then slide the rack forward or backward so it lines up with the front of the bed.



**STEP 4E:** Now tighten all hardware using an H5 head socket and 13mm socket or wrench.

**Note:** Only the 2 front mounting holes on the chase rack are utilized with this mounting method.

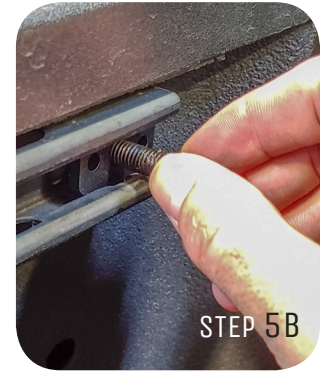


# INSTALLATION MANUAL

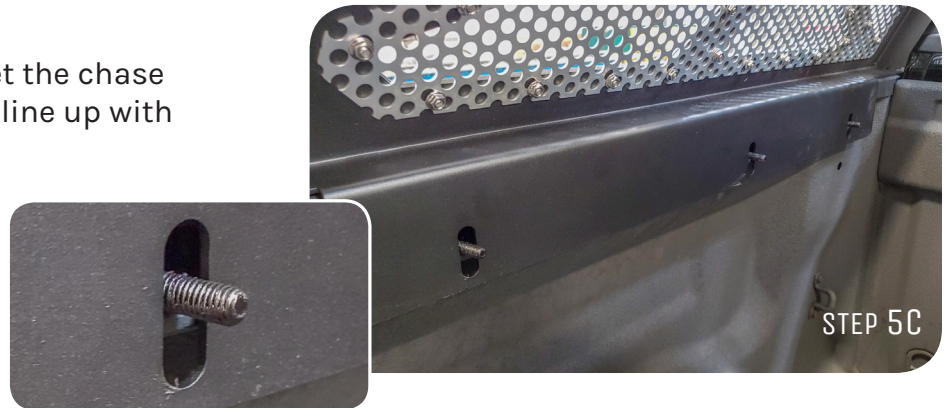
**STEP 5A:** First remove the front end caps from the bed rails (closest to the cab) so you can slide in the mounting hardware.



**STEP 5B:** Slide in the mounting hardware. There are 3 per side.



**STEP 5C:** With your buddies help set the chase rack in place so the holes line up with the mounting slides



**STEP 5D:** Using the supplied washers, split washers, and 13mm nuts, tighten finger tight. Repeat on the other side. Then slide the rack forward or backward so it lines up with the front of the bed.



**STEP 5E:** Now tighten all hardware using an 13mm socket or wrench.



# INSTALLATION MANUAL

---

STEP 6: **You're done!** Insure all hardware is secure and that rack lines up on the bed properly. Enjoy!

