

4 DOOR SOFT TOP ROOF RACK 2021+ FORD BRONCO RRBR-01



TOOLS REQUIRED

- Ratchet
- 10mm Wrench
- 13mm Socket
- 3mm, 4mm Allen Bit

SKILL LEVEL

- Novice/Intermediate
- 2 persons

Little skill level required, you can easily assemble it by yourself however, additional help will be required to finish install.

TIME REQUIRED

- 3 Hours

Time to install this should only take about three hours.

WARNINGS/CAUTIONS BEFORE STARTING INSTALLATION

Before you install this kit – Read and understand all instructions, warnings, cautions, and notes contained in this installation instruction guide. Consult your vehicle owner’s manual for proper disconnection of electrical and lifting of vehicle if required for installation of this product.

This install may require some technical skills and knowledge of basic mechanical work. If you do not feel that you are capable of performing this install please take this product to a trained professional.

After reading this guide please contact us with any questions or concerns before installing product.
Customer Service: 855-680-9595

DV8 Offroad is not responsible for any bodily injury or harm to you or your vehicle as a result of an improper install.

Proper installation of this kit required knowledge of the factory recommended procedures for removal and installation of original equipment components. We recommend that the factory shop manual and any special tools needed to service your vehicle be on hand during the installation. Installation of this kit without proper knowledge of the factory recommended procedures may affect the performance of these components and the safety of the vehicle

- Always wear eye protection when operating power tools

Inspect all contents of this package to make sure product is not damaged and all installation hardware has been included. If parts are missing from kit, please be prepared to provide the following information

1. Name of purchase location
2. Bar Code on side of box
3. Date above bar code
4. Date inside box cover



INSTALLATION MANUAL

STEP 1

Begin by unpacking all items and inspecting for missing pieces or damage. If you have any concerns, please contact the company the product was purchased from. *Note: Additional hardware may be included in hardware kit*

HARDWARE INCLUDED

(14) M8x20 Hex Head Bolts	(24) M6x14 Allen Head Bolts
(4) M8x25 Hex Head Bolts	(4) M6x20 Allen Head Bolts
(18) M8 Flat Washers	(56) M6 Flat Washers
(14) M8 Serrated Nuts	(28) M6 Split Washers
(8) M5x16 Allen Head Bolts	(28) M6 Serrated Nuts
(8) M5 Flat Washers	



STEP 2

Lay out all cross bars and sides to prepare for assembly.

The arc on the cross bars should be facing up.

NOTE: The 4 holes on each long piece (green arrows should be the rear of the rack.

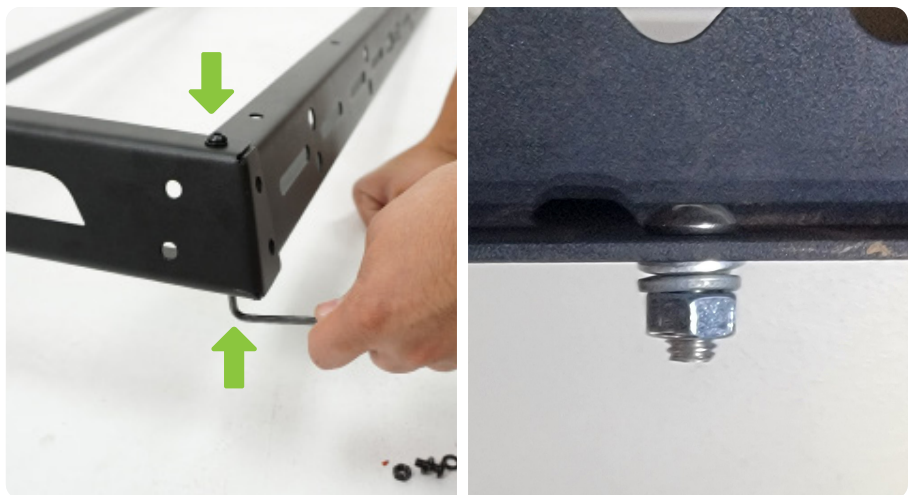


STEP 3

Using a 10mm wrench and 4mm allen bit, assemble cross bars and corners with provided M6x14 hardware.

Cross bars will be assembled using only one split washer, flat washer, and nut on the bottom of the rack. You may have extra flat washers leftover.

NOTE: Only top and bottom mounting holes will be used in the corners for assembling the rack.



INSTALLATION MANUAL

STEP 4

Install provided foam pieces to the corresponding mounting brackets. The large bracket will have one piece on top and bottom.



STEP 5

Assemble the two smaller front mounting brackets and secure using provided M6x20 hardware with a 4mm allen bit and 10mm wrench.

This hardware is used specifically for these brackets due to the load that is placed on them.

Note: These brackets are driver and passenger specific. To avoid any confusion, you can install the bottom mount on the vehicle, and assemble it there. (Step 6 and 7)



DRIVERSIDE BRACKET



INSTALLATION MANUAL

STEP 6

Moving to the vehicle, remove the trim pieces located at the top of the windshield by gently pulling from the top until it releases. Remove the factory nuts using a 10mm socket and remove the plastic insert.



STEP 7

Install the front mounting brackets by laying it over the factory studs and secure using the factory hardware with a 10mm socket. Take note of the orientation of the bracket installed on the vehicle.



INSTALLATION MANUAL

STEP 8

Insert the rear mounting brackets into place by undoing the soft top clamps, and lifting the rear of the soft top up slightly.

Slide the brackets into place.

There is an opening on the bottom of the brackets that must slide over an exposed bolt for proper fitment.

NOTE: An extra pair of hands to hold the bracket while it's being secured will make this easier.



STEP 9

From the inside of the vehicle, secure the rear mounting brackets from step 6 using the provided M8x25 hardware and 13mm socket.

These will be located next to the roll bar on both sides of the vehicle.

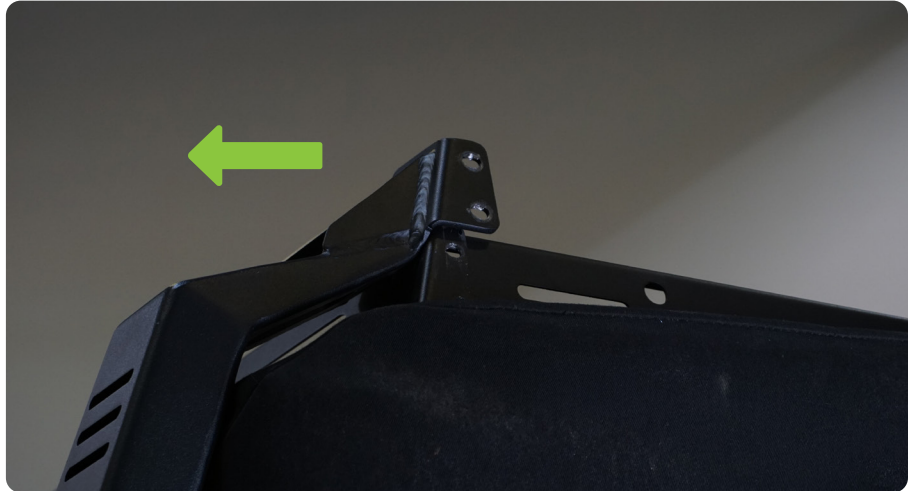


INSTALLATION MANUAL

STEP 10

With the assistance of another person, lift the roof rack on to the vehicle lining it up with the front mounts.

To fit the rack inside the rear mounts, gently pull on the rear bracket from the top and away from the vehicle to allow enough room for the rack to slide between the mounts.



STEP 11

Loosely secure the rack to the front and rear mounts using the provided M8x20 hex head bolts hardware using a 13mm socket.

Check fitment and secure into place.



INSTALLATION MANUAL

STEP 12

Install the top and bottom caps to the front mounts using a 3mm allen bit and provided M5x16 hardware. Align them and secure, but do not over tighten.



STEP 13

Double check fitment and all hardware is secure. Congrats! You are now finished with the installation of the Ford Bronco Soft Top Roof Rack.

