

## MTO SERIES REAR BUMPER

(3RD GEN) 2022+ TOYOTA TUNDRA

RBTT2-04



### TOOLS REQUIRED

- 10mm, 16mm, 21mm Wrench
- 8mm, 10mm, 12mm, 15mm, 21mm Socket
- 4mm Allen Bit
- HD Double Sided Tape/ Epoxy
- Zip Ties
- Painters Tape/Sharpie
- Scissors
- Needle Nose Pliers

### SKILL LEVEL

- Intermediate/ Difficult
  - 2 to 3 persons
- Little skill level required, however,

### TIME REQUIRED

- 4 Hours
- Time to install this should only take about four hours.

## WARNINGS/CAUTIONS BEFORE STARTING INSTALLATION

Before you install this kit – Read and understand all instructions, warnings, cautions, and notes contained in this installation instruction guide. Consult your vehicle owner's manual for proper disconnection of electrical and lifting of vehicle if required for installation of this product.

This install may require some technical skills and knowledge of basic mechanical work. If you do not feel that you are capable of performing this install please take this product to a trained professional.

After reading this guide please contact us with any questions or concerns before installing product.  
Customer Service: 855-680-9595

*DV8 Offroad is not responsible for any bodily injury or harm to you or your vehicle as a result of an improper install.*

Proper installation of this kit required knowledge of the factory recommended procedures for removal and installation of original equipment components. We recommend that the factory shop manual and any special tools needed to service your vehicle be on hand during the installation. Installation of this kit without proper knowledge of the factory recommended procedures may affect the performance of these components and the safety of the vehicle

- Always wear eye protection when operating power tools

*Inspect all contents of this package to make sure product is not damaged and all installation hardware has been included. If parts are missing from kit, please be prepared to provide the following information*

1. Name of purchase location
2. Bar Code on side of box
3. Date above bar code
4. Date inside box cover



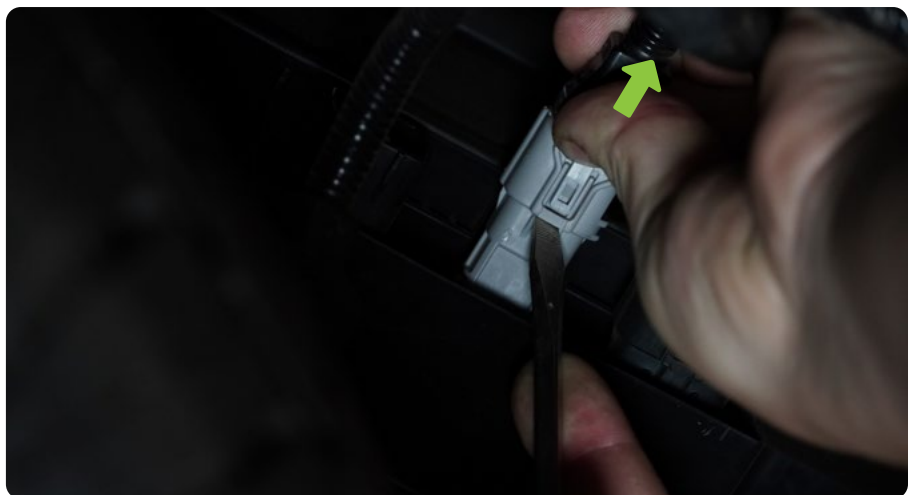
# INSTALLATION MANUAL

**STEP 1** | Unplug the trailer wiring harness from the vehicle by pressing the release tabs and pulling.

Use a trim clip tool if necessary.

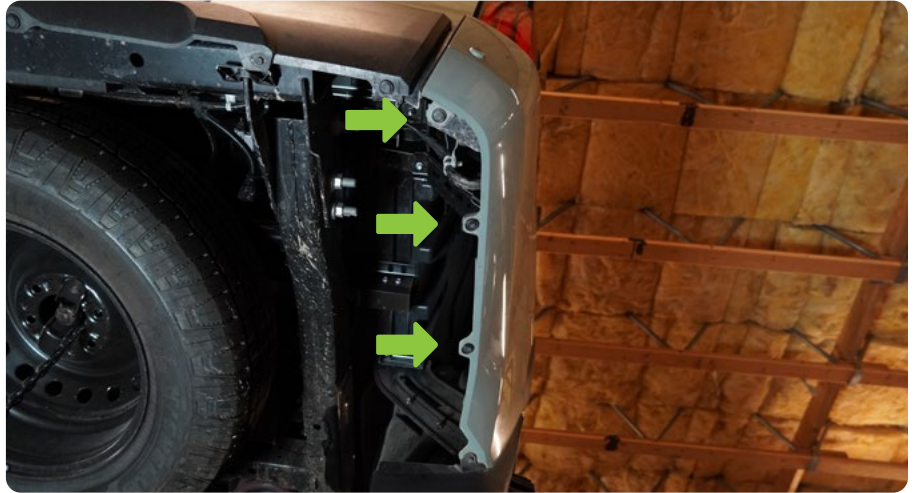


**STEP 2** | Unplug the three wiring harnesses located next to the spare tire on the passenger side using a trim clip tool to press the release tabs and pull.

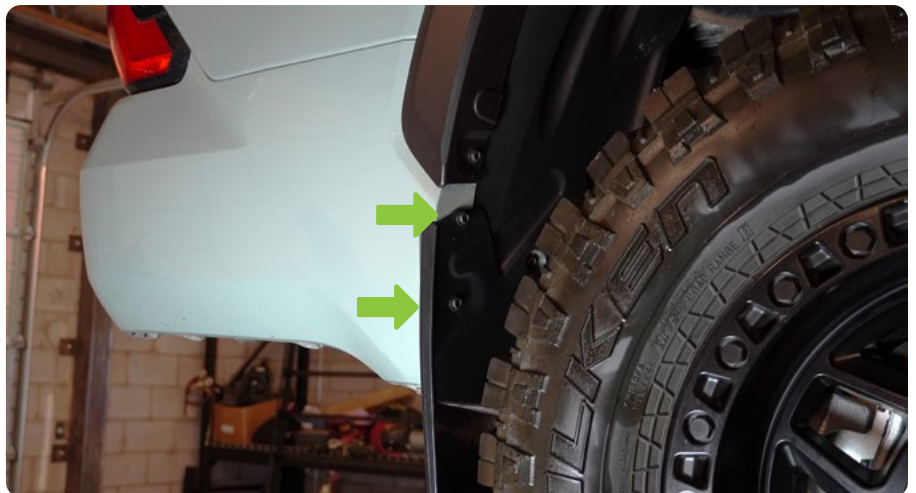


## INSTALLATION MANUAL

**STEP 3** | Use a trim clip tool to remove the three push pins located along the bottom of both fenders.



**STEP 4** | Use a 10mm wrench to remove the bottom (2) bolts on the lip of the fender securing the flare to the vehicle.

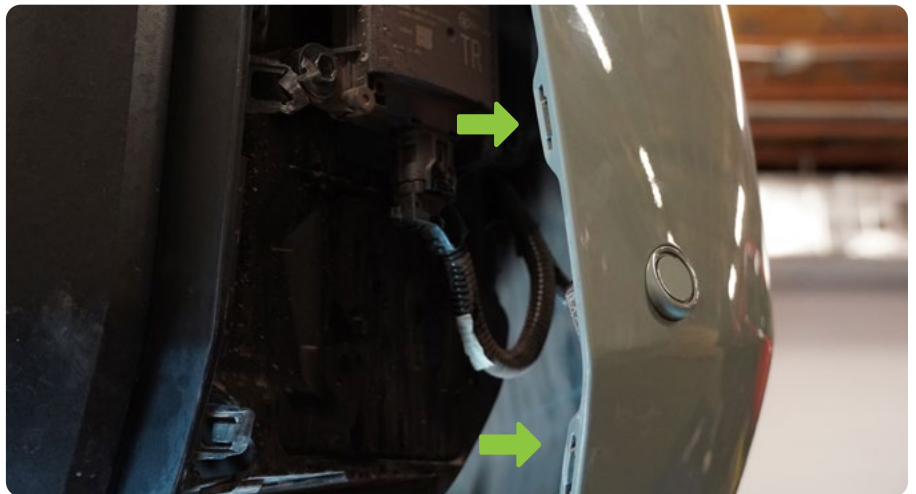


## INSTALLATION MANUAL

**STEP 5** | Partially remove the trim next to the bumper on the both sides of the vehicle by gently pulling towards the rear of the vehicle to release the clips.

When the clips are released, allow it to hang gently to the side.

*Note: Do not pull to the sides or the clips will break. Pull towards the rear of the vehicle. Use a trim clip tool if necessary.*



**STEP 6** | Unplug the wiring harness located behind the trim on the passenger side of the vehicle.



# INSTALLATION MANUAL

**STEP 7 |** Unplug the sensor wiring harness from the sensors located in the plastic trim on both sides of the vehicle.

Press the release tabs and gently pull to unplug the wiring. use a trim clip tool if necessary.



**STEP 8 |** Use a trim clip tool to remove the clips securing the wiring harness, and gently pull the wiring out to prepare for bumper removal.



# INSTALLATION MANUAL

## STEP 9 |

Remove the bumper with assistance and set off to the side on a soft work surface for preparation of the DV8 bumper.

Use a 22mm socket and wrench to remove the bolts securing the bumper to vehicle, located along both frame rails.

*Note: Bumper may become loose and fall when removing these bolts. Assistance is necessary to prevent injury and damage to the product or vehicle.*



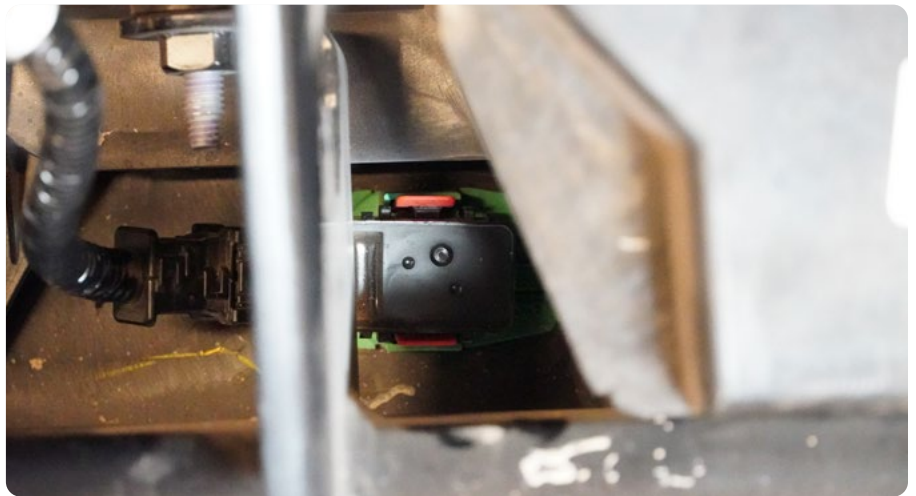
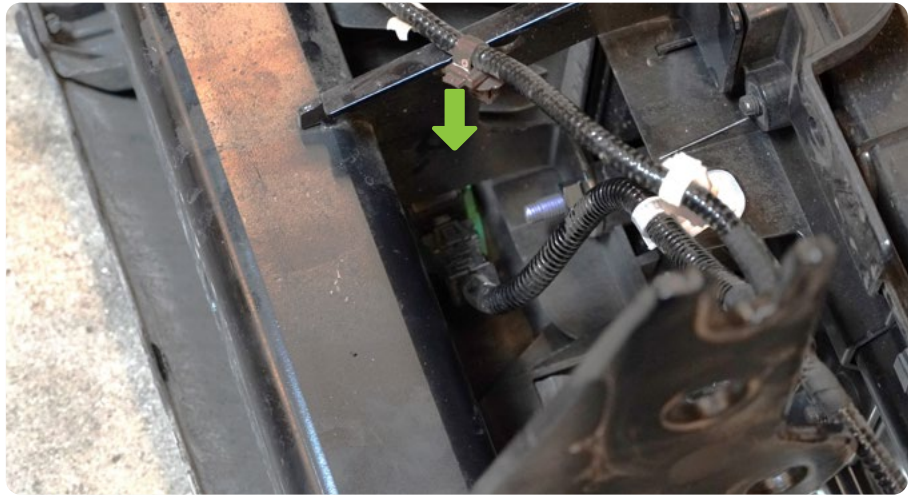
**STEP 10 |** Use a trim clip tool to remove the clips securing the sensor wiring harness to bumper and set it off the to side for installation on the DV8 bumper.



# INSTALLATION MANUAL

**STEP 11** | Remove the sensors and bezels by gently prying with a trim clip tool. These are held on by tape only.

*Note: These sensors are location specific. Mark the driver and passenger side sensors with tape and sharpie for re-assembly.*



**STEP 12** | Use a 10mm socket to remove the bolt securing the proximity sensor.



## INSTALLATION MANUAL

**STEP 13** | Remove the trailer harness plug by squeezing the two release tabs on each side, and pushing it out to the “rear” of the bumper.



**STEP 14** | Use a trim clip tool to remove the clips securing the plastic trim covers on the hitch step.

*Note: These are very stiff and can be difficult to remove.*

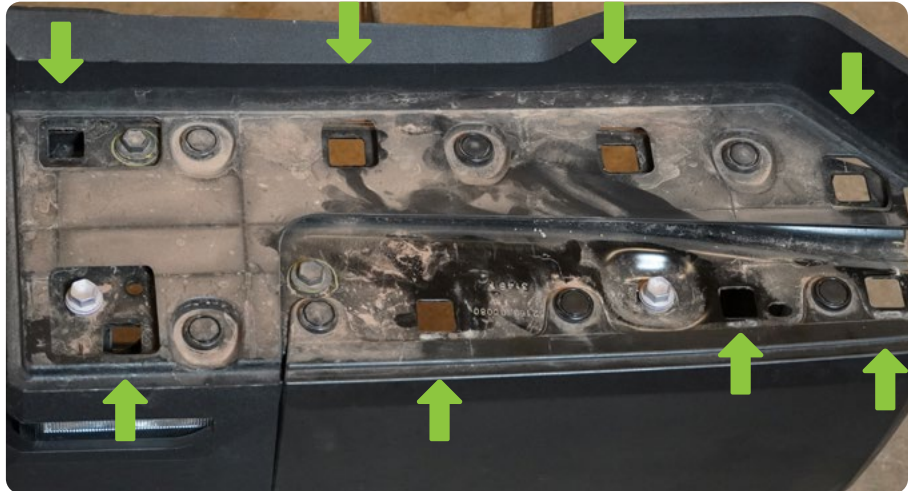




# INSTALLATION MANUAL

**STEP 15** | Remove the remaining top trim pieces from the bumper using a trim clip tool.

Squeeze the tabs underneath with needle nose pliers if necessary where applicable.



**STEP 16** | Use a trim clip tool to remove the clips located along the bottom lip of each side of the bumper and above the hitch step.

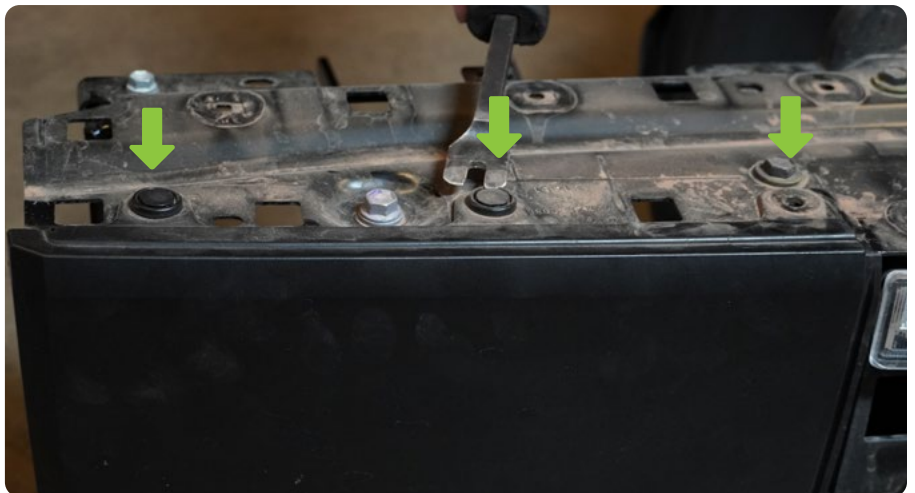


## INSTALLATION MANUAL

**STEP 17** | Remove the clips securing the center plastic trim to the bumper using a trim clip tool and pull up on the trim to remove it.

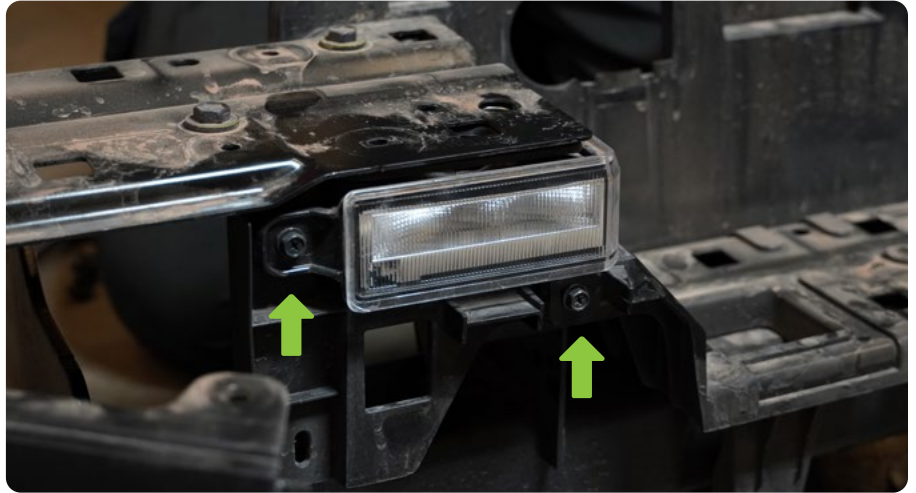


**STEP 18** | Use a trim clip tool to remove the clips securing the remaining trim pieces to the bumper.

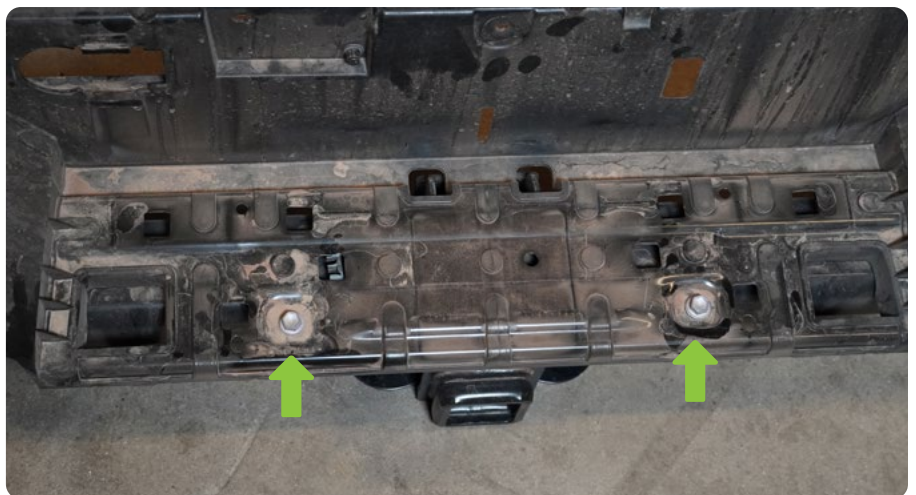
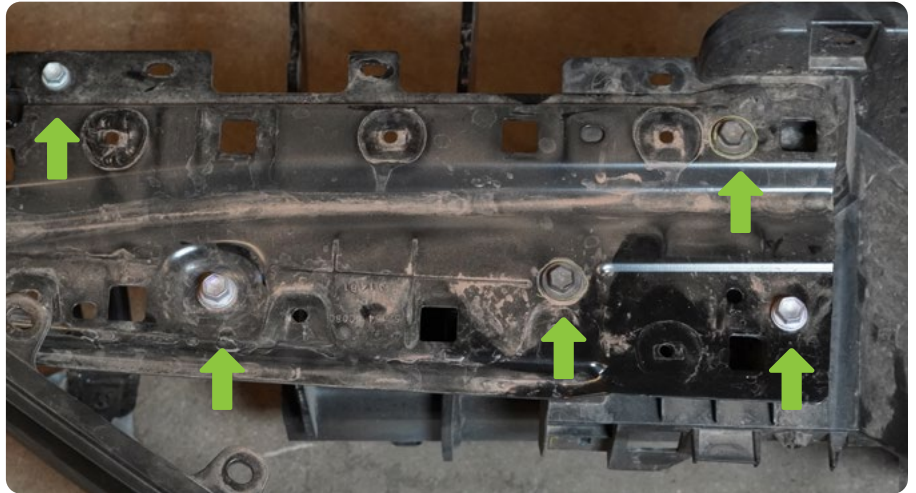


# INSTALLATION MANUAL

**STEP 19** | Use an 8mm socket to remove the bolts securing the license plate lights.



**STEP 20** | Use a 12mm socket to remove the bolts on the hitch step and two top sections securing the trim to the hitch.



# INSTALLATION MANUAL

**STEP 21** | Remove all trim pieces from the hitch.



# INSTALLATION MANUAL

Begin by unpacking all items and inspecting for missing pieces or damage. If you have any concerns, please contact the company the product was purchased from.

## HARDWARE INCLUDED

- |                        |                      |
|------------------------|----------------------|
| (6) M14x45 Hex         | (6) M10 Flat Washers |
| (6) M14 Spring Washers | (2) M10 Nuts         |
| (6) M14 Nuts           | (8) M6x30 Allen      |
| (12) M14 Flat Washers  | (8) Nylon Lock Nuts  |
| (4) M10x35 Hex         | (16) M6 Flat Washers |
| (4) M10 Spring Washers |                      |



**STEP 22** | Install the trailer harness plug by pressing it into place until the clips are secure.



**STEP 23** | If you are installing pod lights on the bumper, do so at this time using the hardware provided with the lights.



# INSTALLATION MANUAL

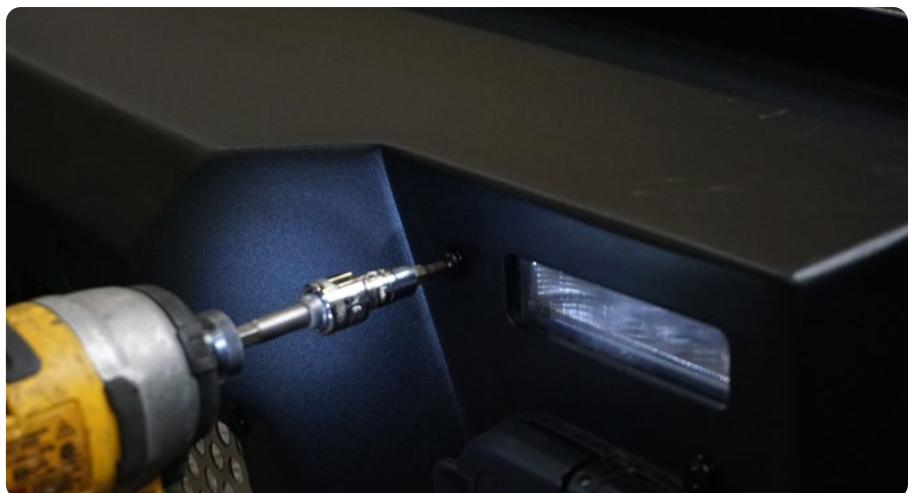
**STEP 24** | Cut appropriately sized pieces of HD double sided tape and apply it to the side of the sensor bezels that will contact the bumper.

Install bezels/sensors into the bumper in the locations they were removed from by pressing the bezel into place. **Do not press on the sensor.**

Reference the painters tape/marks from step.



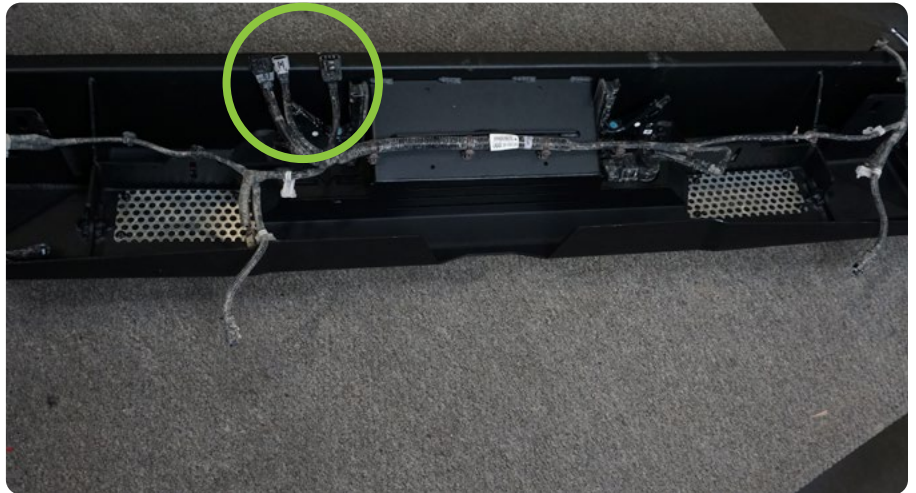
**STEP 25** | Install the factory license plate lights on the bumper using a 4mm allen bit and the provided M6x30 allen hardware.



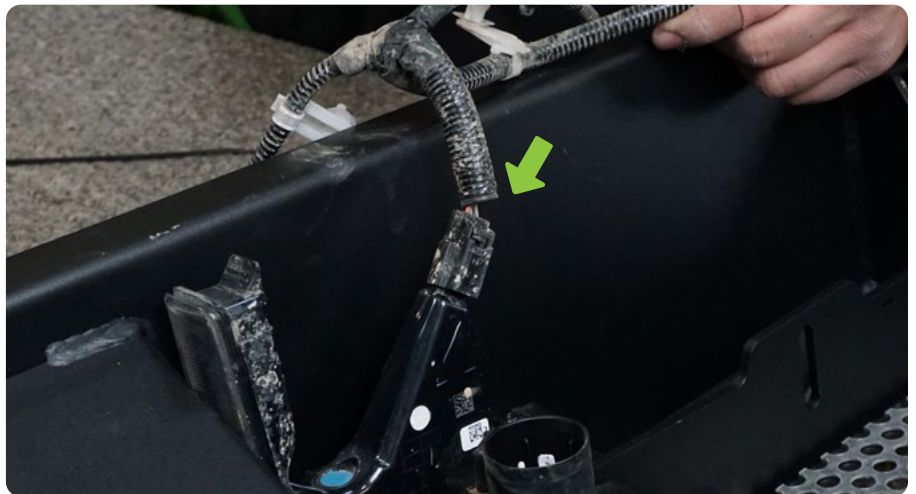
## INSTALLATION MANUAL

**STEP 26** | Lay the vehicles wiring harness across the bumper so the sensors at their approximate location of install.

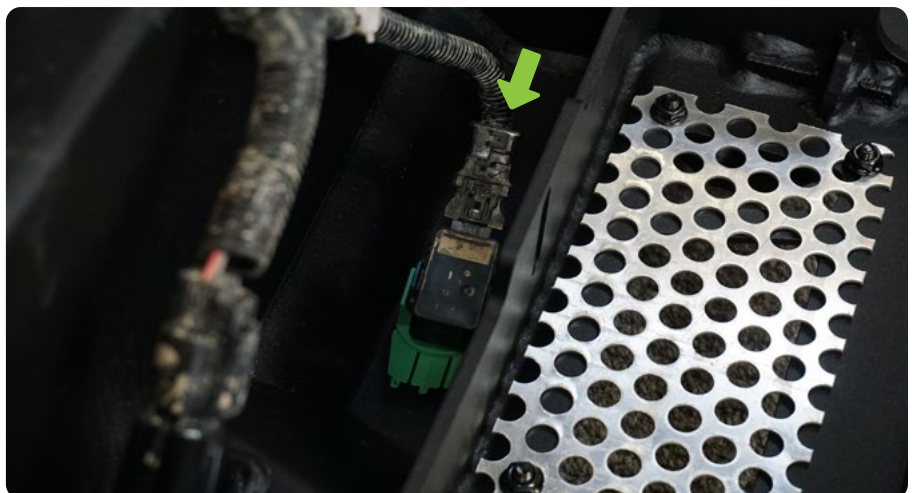
The three wiring connectors will be located on the passenger side of the bumper.



**STEP 27** | Install the connectors for the license plate lights by pressing them into place until the clips are secure.



**STEP 28** | Install the wiring connectors onto the sensors in the bumper.



# INSTALLATION MANUAL

**STEP 29** | Install the license plate using the provided M6x30 allen hardware and a 4mm allen bit.

In addition to securing the license plate, this hardware is also used to secure the Key fob proximity sensor on the backside of the license plate mount.

At this time, route and secure any wiring out of the way using zip ties.



**STEP 30** | Install the provided brackets onto the bumper as shown using the provided M14 hardware with a 21mm wrench and socket.





## INSTALLATION MANUAL

**STEP 31** | Place the hitch in the bumper between the mounting brackets and remove the plastic mounting trim on the bottom of the hitch to prepare the hitch for installation on the bumper.



**STEP 32** | Secure the hitch to the mounting brackets using the M10 hardware with a 16mm wrench and socket.

*Note: If you are installing lights, do so at this time using the hardware provided with the lights.*



**STEP 33** | If you choose to apply griptape to the top of the bumper, do so at this time.



# INSTALLATION MANUAL

With assistance, lift the bumper to the vehicle and loosely secure it using the factory hardware and a 22mm socket and wrench.

Bottom of the bumper should be slightly lower than the trim panels, but sitting evenly with the trim panels is acceptable.

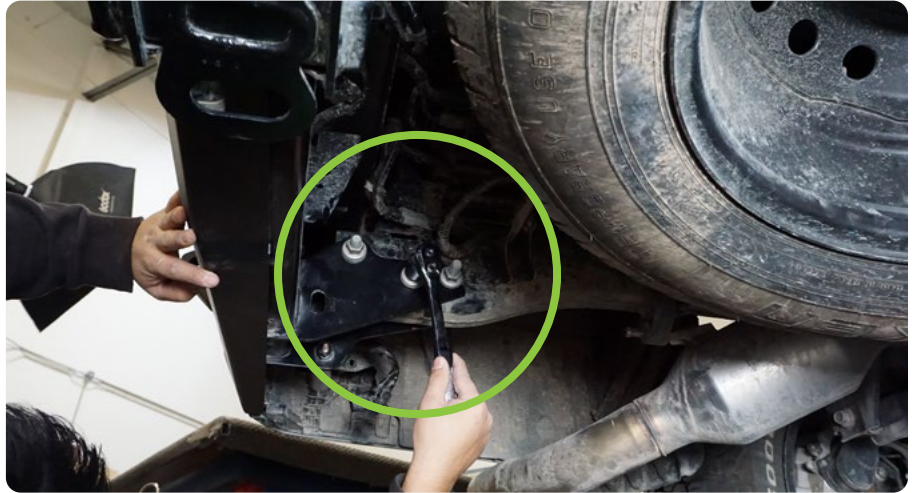
Gently drop the tailgate and check that the tailgate does not contact the bumper.

If the tailgate touches the bumper or it is sitting above the trim line the bumper must be adjusted.

To adjust, push up on the mounts from underneath, while a friend pulls down on the bumper to “roll” the bumper backwards.

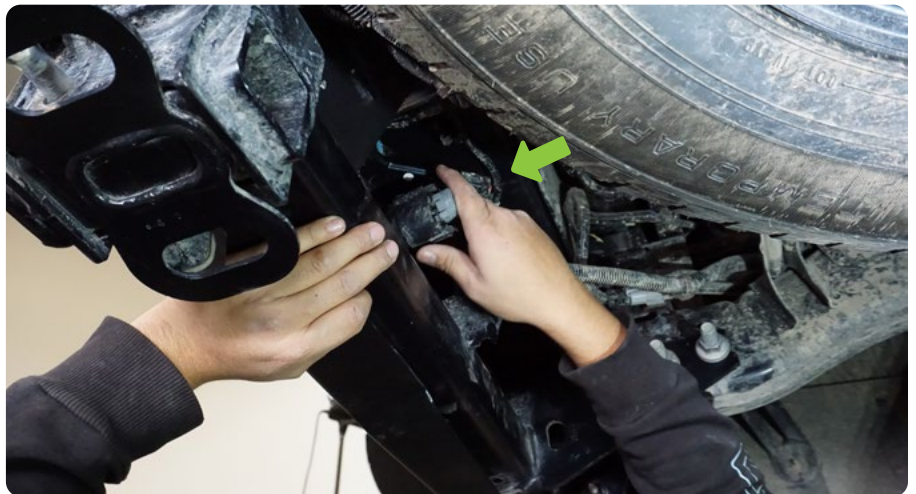
Finish securing the hardware once

- There is sufficient clearance between the bumper and dropped tailgate
- The bottom of the bumper sit flush with, or below the trim panels.



## INSTALLATION MANUAL

**STEP 34** | Use a trim clip tool to remove the clip securing the trailer plug wiring harness, then connect the harness to the plug by pressing it into place.



**STEP 35** | Install the three wiring connectors located above the spare tire on the passenger side of the vehicle by pressing them into place until the clips are secure.



# INSTALLATION MANUAL

**STEP 36** | Connect the sensor wiring harnesses to the sensors on the vehicle trim on both sides of the vehicle.

Then, secure the trim panels by gently pressing it into place until the clips are secure.



**STEP 37** | Install the factory push clips running along the bottom lip of both fenders.



## INSTALLATION MANUAL

**STEP 38** | Use a 10mm wrench to install the factory bolts on the lip of the fender securing the flare to the vehicle.



**STEP 39** | Congrats! You are finished with the install of the (3rd Gen) 2022+ Toyota Tundra Rear MTO Series Bumper.

