

Tacoma Rear Bumper

2016+ TOYOTA

RBTT1-04



TOOLS REQUIRED

- Push pin removal tool
- Needle Nose Pliers
- 12,13, 17, 21mm Socket
- 21mm Wrench/Adjustable Wrench

SKILL LEVEL

- Novice/Intermediate
 - 1 to 2 People
- Little skill level required, you can easily install it by yourself however, additional help will be useful.

TIME REQUIRED

- 2.5 Hours
- Time to install this should take approximately 2.5 Hour.

WARNINGS/CAUTIONS BEFORE STARTING INSTALLATION

Before you install this kit – Read and understand all instructions, warnings, cautions, and notes contained in this installation instruction guide. Consult your vehicle owner’s manual for proper disconnection of electrical and lifting of vehicle if required for installation of this product.

This install may require some technical skills and knowledge of basic mechanical work. If you do not feel that you are capable of performing this install please take this product to a trained professional.

After reading this guide please contact us with any questions or concerns before installing product.
Customer Service: 855-680-9595

DV8 Offroad is not responsible for any bodily injury or harm to you or your vehicle as a result of an improper install.

Proper installation of this kit required knowledge of the factory recommended procedures for removal and installation of original equipment components. We recommend that the factory shop manual and any special tools needed to service your vehicle be on hand during the installation. Installation of this kit without proper knowledge of the factory recommended procedures may affect the performance of these components and the safety of the vehicle

- Always wear eye protection when operating power tools

Inspect all contents of this package to make sure product is not damaged and all installation hardware has been included. If parts are missing from kit, please be prepared to provide the following information

1. Name of purchase location
2. Bar Code on side of box
3. Date above bar code
4. Date inside box cover



INSTALLATION MANUAL

STEP 1

Begin by unpacking all items and inspecting for missing pieces or damage. If you have any concerns, please contact the company the product was purchased from.



STEP 2

Begin by unplugging the harness attached to the factory trailer plug if equipped. Squeeze the release tab on the plug and pull away from the bumper.



INSTALLATION MANUAL

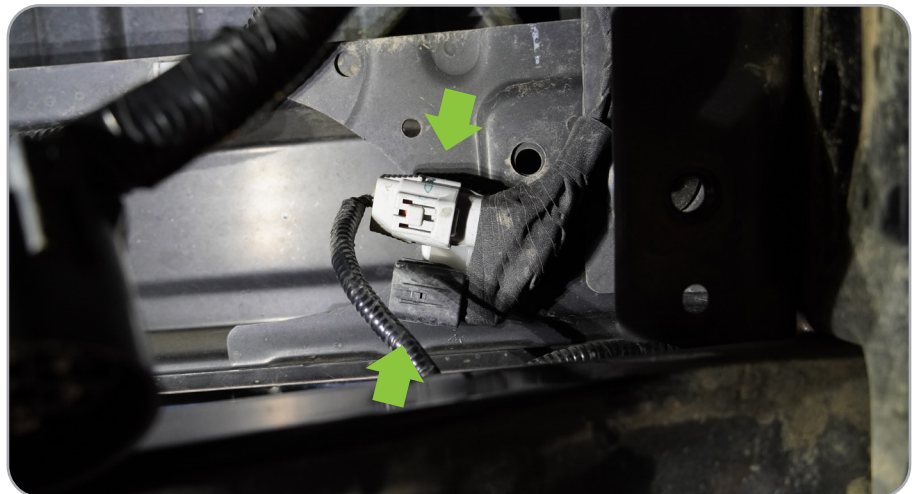
STEP 3

Remove trailer plug by squeezing the two metal clips on each side and push from the backside of the bumper towards the face of the rear bumper.



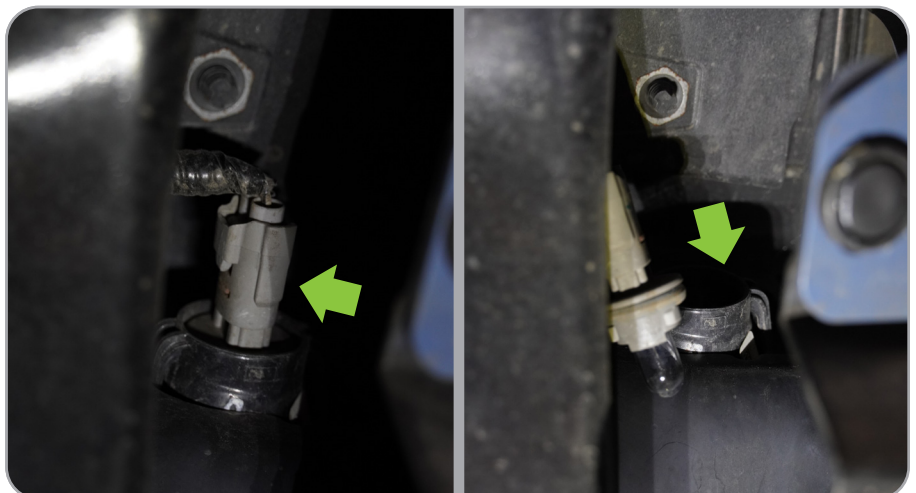
STEP 4

Unplug the harness and sensor plugs located on the bottom side of the bed near the tailgate.



STEP 5

Unplug each license plate light. Turn the plug counterclockwise and pull away from the reflector.



INSTALLATION MANUAL

STEP 6

Remove the license plate from the bumper. Using a push pin remover, remove the pin located directly behind the plate.



STEP 7

On the bottom of the bumper, remove the push pins holding the black section of the bumper to the painted/chrome side pieces. Repeat on other side.

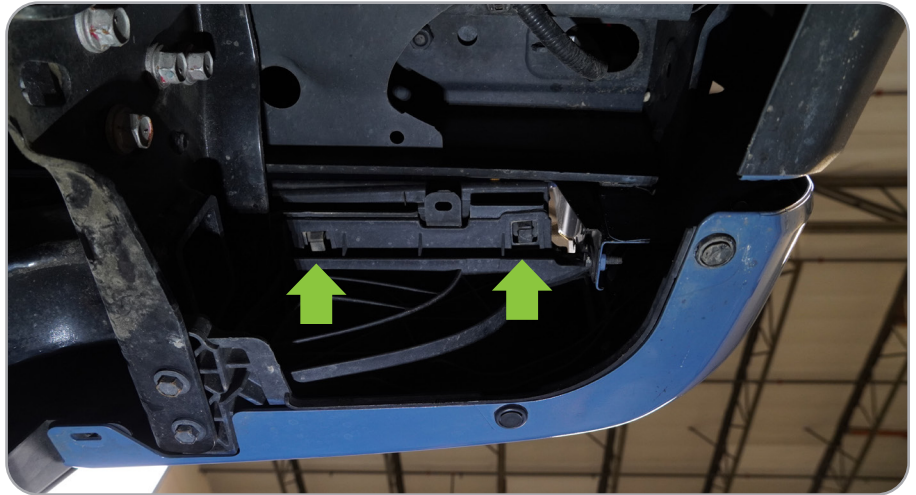


INSTALLATION MANUAL

STEP 8

To release the black section, using needle nose pliers, squeeze the push tabs together while lifting on the black section with minimal amount of force.

NOTE: An extra set of hands will make this process much easier.



INSTALLATION MANUAL

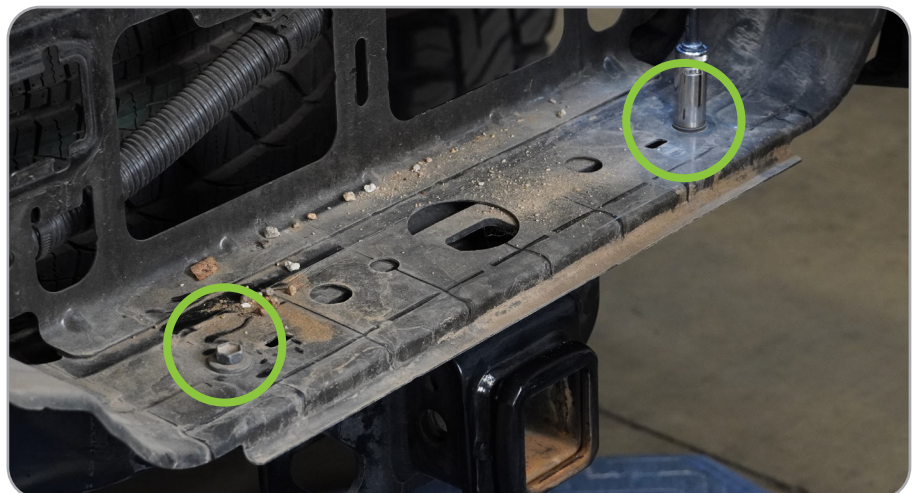
STEP 9

There are some pins located towards the face of the bumper that you will not be able to reach. Once all of the pins that are easily accessed are released, pull up on the black section firmly to remove.



STEP 10

Using a 13mm socket, remove the two bolts connected to the top of the hitch.

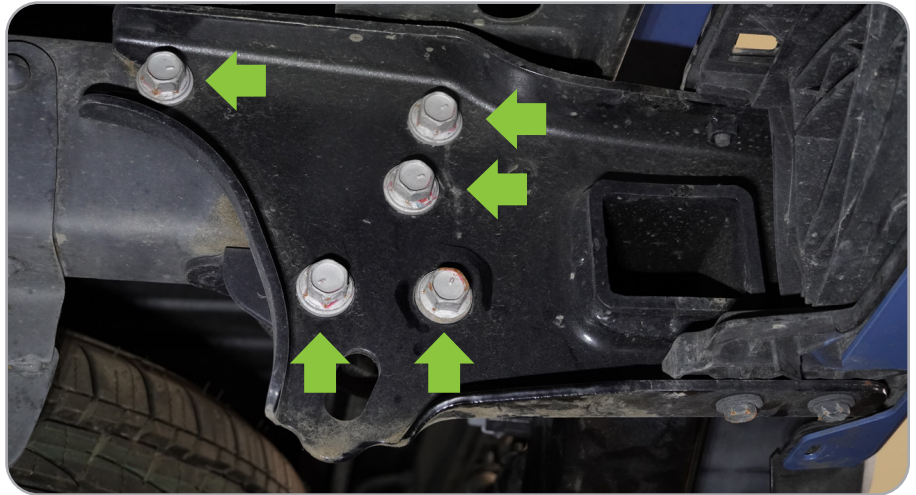


INSTALLATION MANUAL

STEP 11

Using a 17mm socket, remove the five bolts on each frame rail as shown.

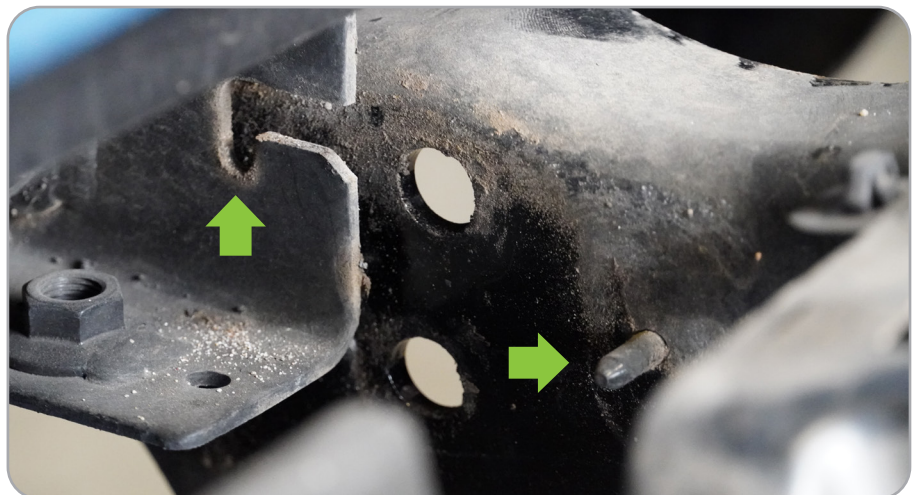
NOTE: Bumper will be loose, ensure it is secure to avoid damage or harm from falling.



STEP 12

Remove the bumper by lifting upwards and pulling towards the rear of the vehicle. Set on smooth surface.

NOTE: There are guide pins in the frame that will avoid the bumper from being pulled straight out.



INSTALLATION MANUAL

STEP 13

With the bumper removed, lay your new DV8 rear bumper on a smooth surface. Install side caps by aligning the front of the cap with the face of the bumper. Use the provided M8 hardware and a #4 allen head and 13mm socket.



STEP 14

Remove the hitch from the OE rear bumper assembly using a 12mm socket.



INSTALLATION MANUAL

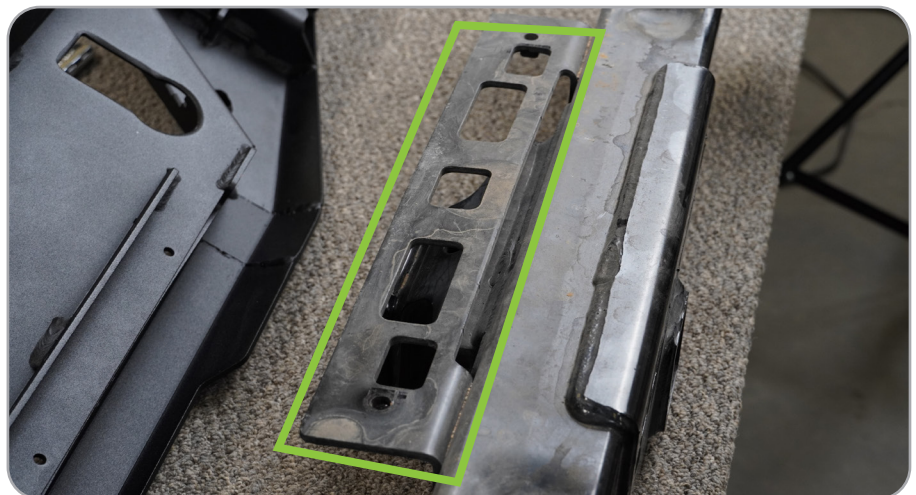
STEP 15

Using the push pin removal tool or snips, remove the harness from the bumper.



STEP 16

Remove hitch from OE bumper assembly and clean step with vehicle safe cleaner.

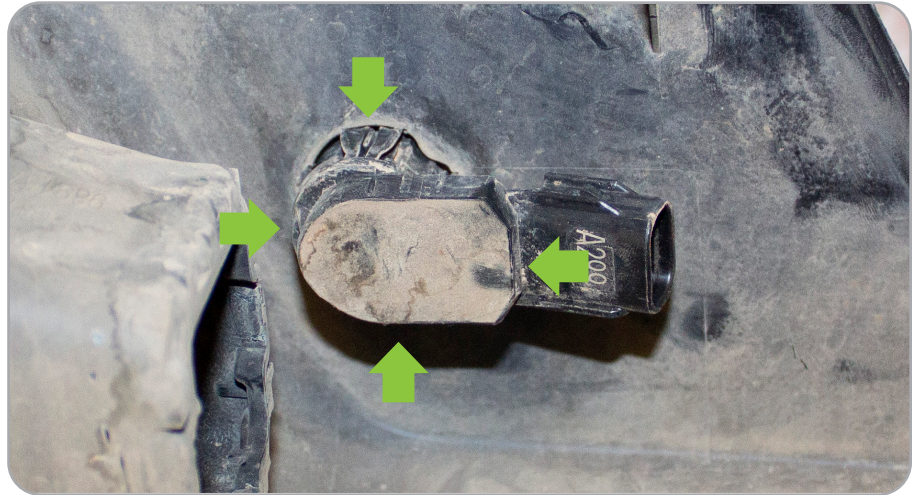


INSTALLATION MANUAL

STEP 17

If equipped, remove the factory sensors from the center of the bumper by pressing on the four tabs surrounding the sensor, and pushing the sensor out of the face of the bumper.

NOTE: Take note of the orientation of the sensors when removing.



STEP 18

To remove the outer sensors, using the push pin removal tool, unfasten the pins holding the outer covers. Detach the covers to access the outer sensors and remove the same way as the center sensors.

NOTE: Take note of the orientation of the sensors when removing.



STEP 19

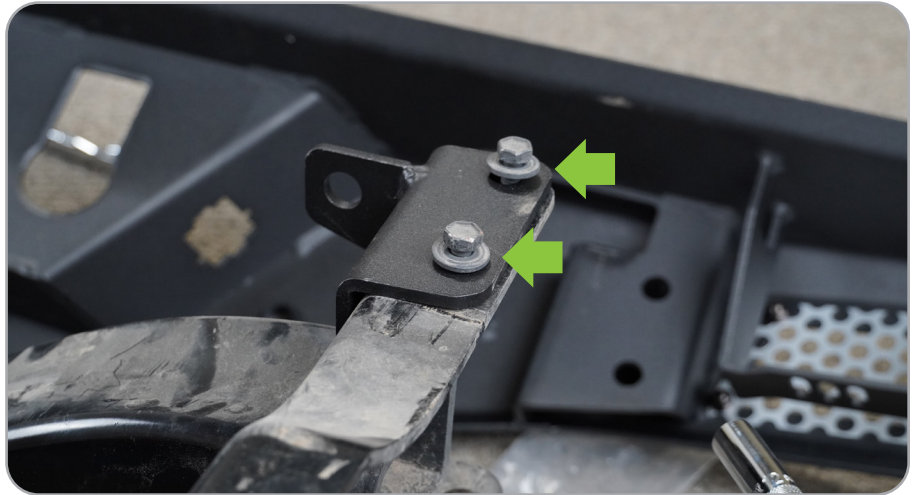
Install sensors into the DV8 bumper with the same orientation as the OE bumper.



INSTALLATION MANUAL

STEP 20

Using factory 12mm bolts, install top brackets onto hitch. Note orientation of brackets to the hitch.

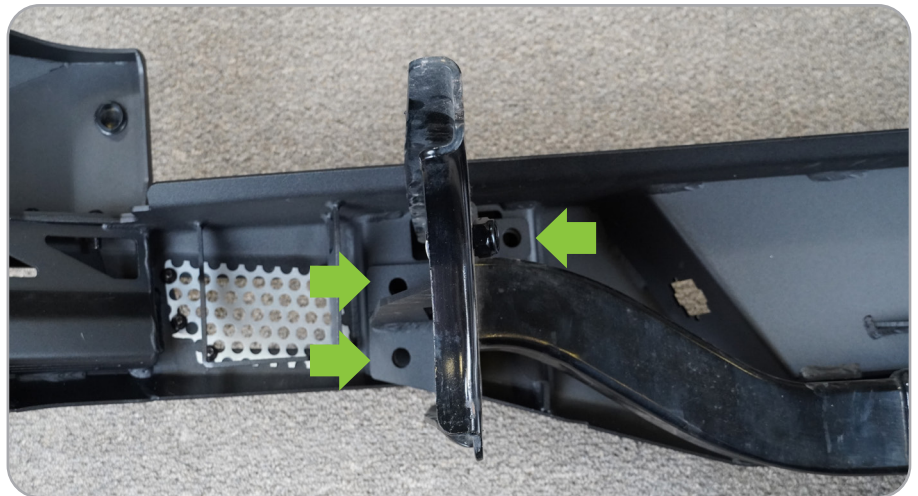


INSTALLATION MANUAL

STEP 21

Mount the main bracket onto hitch using one M14 bolt for alignment. Using provided M14 hardware and 21mm socket, mount hitch with both main brackets to bumper.

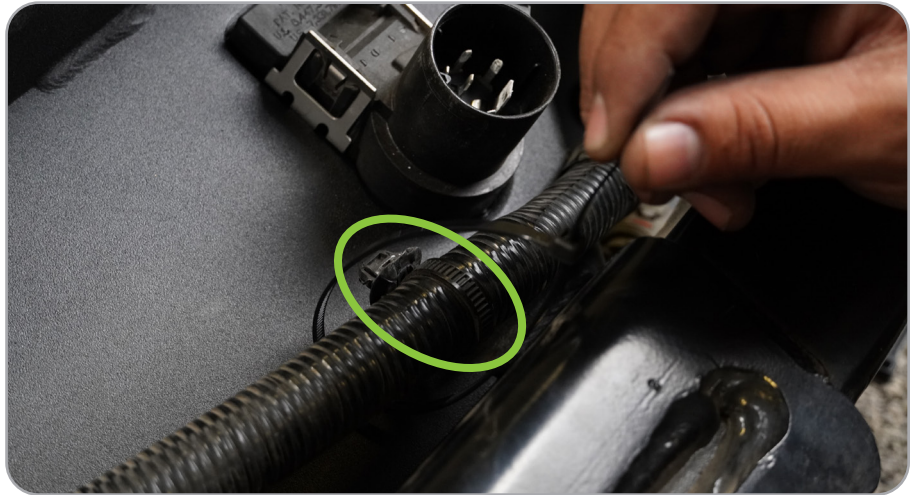
NOTE: You will mount the main brackets in the same orientation if you do not have the factory hitch.



INSTALLATION MANUAL

STEP 22

Route wiring harness along bumper and secure with zip ties on welded in zip tie tabs. Install trailer plug into bumper from the face pushing towards the hitch of the bumper until clip securely clicks into place.

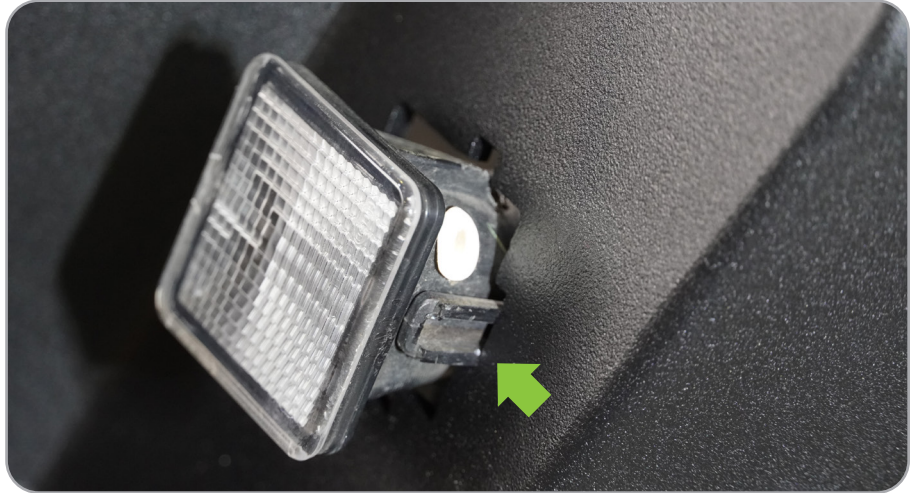


INSTALLATION MANUAL

STEP 23

Remove your license plate light housing from the OE bumper by squeezing the tabs and pushing towards face of the bumper. Reinstall these into the DV8 bumper. Reinstall lights into the housing and secure.

NOTE: They are keyed to face one direction, check before installing.



STEP 24

If you are going to run the optional two 3" led pods, mount them using the hardware provided with the lights.

NOTE: We are using two 3" DV8 elite pod lights for our install.



INSTALLATION MANUAL

STEP 25

Install DV8 bumper onto the truck. While optional, we recommend removing the taillights to make installation much easier and to prevent any damage to the taillights.



STEP 26

To remove the taillights, open tailgate, and using a 10mm socket, remove the three bolts. Once removed, pull directly back on the light to release the pins. Unplug each plug and set off to the side.



INSTALLATION MANUAL

STEP 27

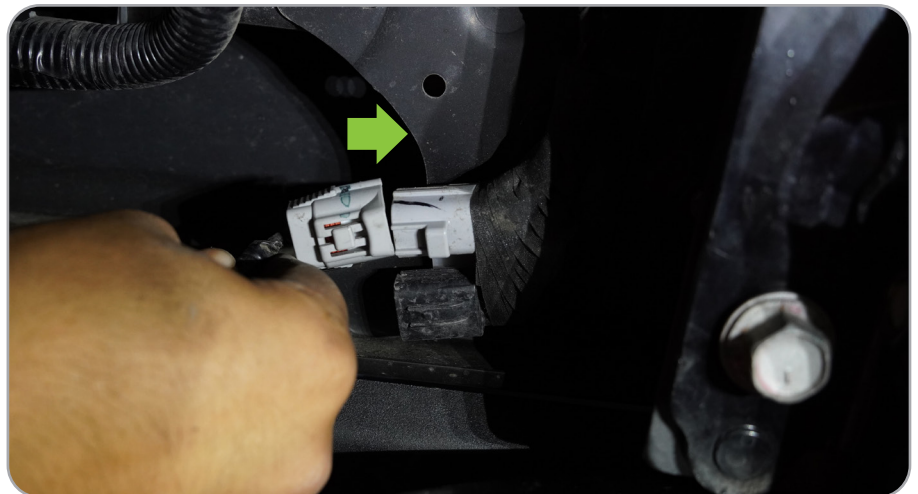
With assistance, lift the bumper onto the track and align post into groove on frame. Using factory hardware, install the ten 17mm bolts into the frame. Torque to 65ft lbs.



INSTALLATION MANUAL

STEP 28

Reinstall taillights using factory hardware, and plug in sensors, license plate brackets and trailer plug wiring.



STEP 29

Double check all hardware is secure and if running optional pods, wire lights as desired.

