

## POCKETED REAR WINDOW MOLLE PANELS

2024+ JEEP WRANGLER JL  
MPJL-02



### TOOLS REQUIRED

- T-50 Torque Head Socket
- 3mm, 4mm Allen Head Sockets
- 8mm Wrench or Socket

### SKILL LEVEL

- Novice/Intermediate
- 1 (you) to 2 persons

Little skill level required, you can easily install it by yourself however, additional help will be useful

### TIME REQUIRED

- 1.5 Hours

Time to install this should only take about an hour and a half.

## WARNINGS/CAUTIONS BEFORE STARTING INSTALLATION

Before you install this kit – Read and understand all instructions, warnings, cautions, and notes contained in this installation instruction guide. Consult your vehicle owner’s manual for proper disconnection of electrical and lifting of vehicle if required for installation of this product.

This install may require some technical skills and knowledge of basic mechanical work. If you do not feel that you are capable of performing this install please take this product to a trained professional.

After reading this guide please contact us with any questions or concerns before installing product.  
Customer Service: 855-680-9595

*DV8 Offroad is not responsible for any bodily injury or harm to you or your vehicle as a result of an improper install.*

Proper installation of this kit required knowledge of the factory recommended procedures for removal and installation of original equipment components. We recommend that the factory shop manual and any special tools needed to service your vehicle be on hand during the installation. Installation of this kit without proper knowledge of the factory recommended procedures may affect the performance of these components and the safety of the vehicle

- Always wear eye protection when operating power tools

*Inspect all contents of this package to make sure product is not damaged and all installation hardware has been included. If parts are missing from kit, please be prepared to provide the following information*

1. Name of purchase location
2. Bar Code on side of box
3. Date above bar code
4. Date inside box cover



# INSTALLATION MANUAL

Begin by unpacking all items and inspecting for missing pieces or damage. If you have any concerns, please contact the company the product was purchased from. Extra hardware may be included with the product.

## HARDWARE INCLUDED

- |                               |                       |
|-------------------------------|-----------------------|
| (4) M5x16mm Allen Head Bolts  | (10) M6 Split Washers |
| (4) M5 Lock Nuts              | (10) M6 Flat Washers  |
| (8) M5 Flat Washers           |                       |
| (10) M6x16mm Allen Head Bolts |                       |



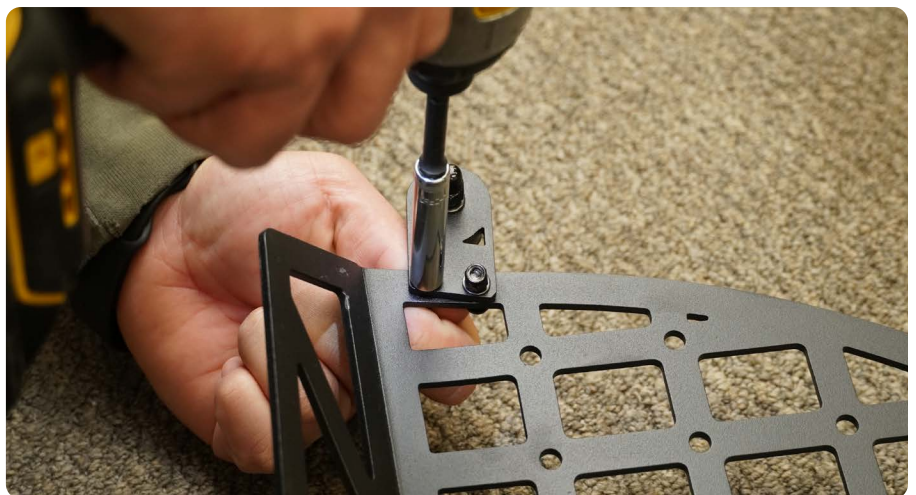
**STEP 1** | (Passenger side installation shown) Lay the DV8 Molle panel on a covered work bench with the DV8 logo pointing upward.

Mount the provided upper support bracket with rubber stop pad to the panel as shown using the provided M5 hardware. (Rubber stop pad should be facing the rear roll-bar)

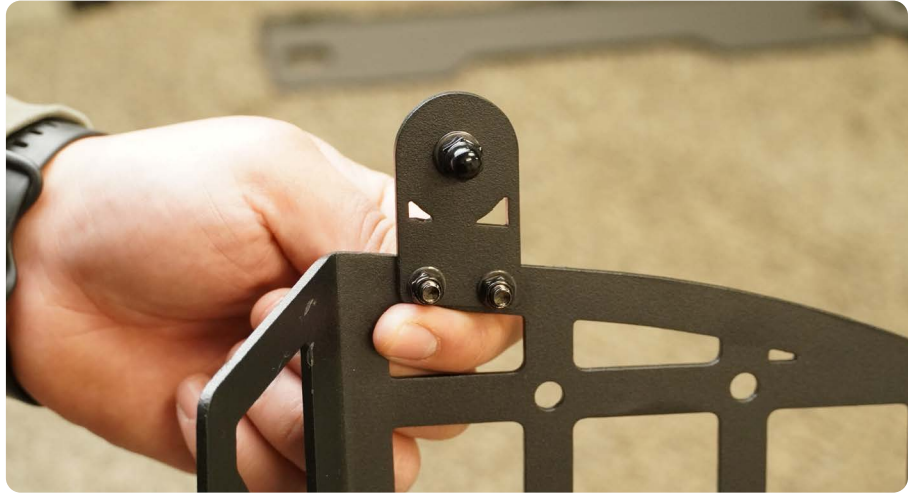
Use (2) M5 flat washers per M5 Allen head bolt.



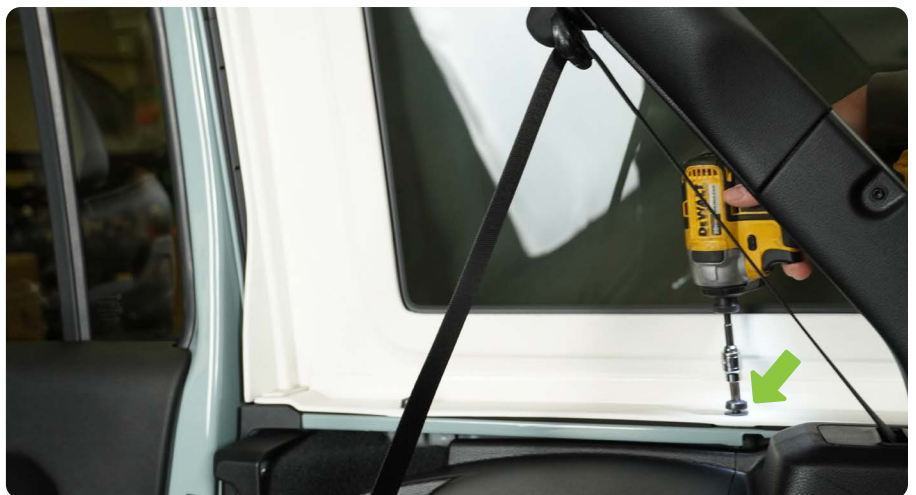
**STEP 2** | Use a #3 Allen tool and 8mm socket to secure the brackets M5 hardware.



# INSTALLATION MANUAL



**STEP 3** | Use a T50 Torx tool to remove (2) of the factory hardtop mounting bolts as shown.



## INSTALLATION MANUAL

**STEP 4** | Place the provided mounting bracket over the factory hardtop bolt holes previously removed. Use the factory Torx Head bolts to loosely secure the mounting bracket in place.

(If the hardtop is often removed, this mounting bracket can also be sandwiched between the vehicles body and hardtop to make hardtop installation & removal easier)



**STEP 5** | With a firm grip or using a trim clip tool, remove the seat-belts center cap by pulling straight backwards.



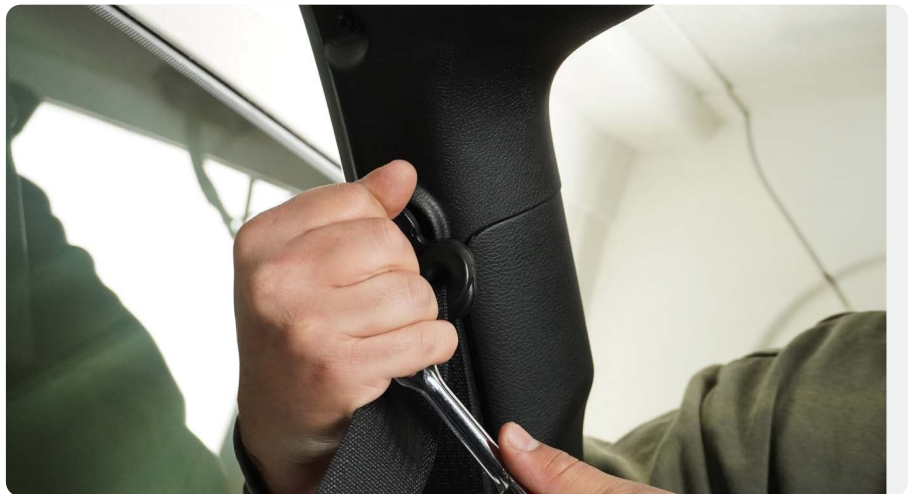
# INSTALLATION MANUAL



**STEP 6** | Use a T50 Torx bit and an breaker bar/ratchet to break loose the seat belt bolt

**Note:** This bolt has a decent amount of thread locker from the factory so be sure to take your time to prevent stripping the bolt head.

Once the tension is broke loose you can use a power tool to remove the seat belt bolt.



# INSTALLATION MANUAL

**STEP 7** | Place the provided mounting bracket behind the seat belt and use the factory seat belt bolt to loosely secure the mounting bracket and seat belt in place.

Note the direction of the bracket in this image.

**TECH TIP:** Place a small amount of blue thread locker on the factory seat belt bolt threads before installation.



**STEP 8** | Place the DV8 Pocketed Molle panel on top of the bottom mounting bracket and behind the seat belt mounted bracket.

Ensure the upper support tab with rubber pad should be resting against the roll bar.



# INSTALLATION MANUAL

**STEP 9** | Align the seat belt mounting bracket with the threaded holes in the Molle panel.

Use the provided M6 hardware to loosely secure the Molle panel.

Use (1) M6 flat washer per M6 Allen head bolt.

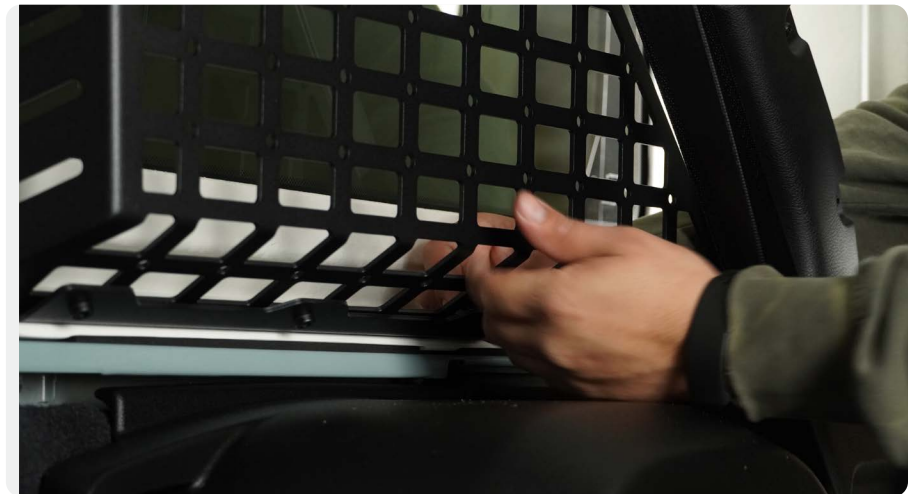
Use (1) M6 split washer per M6 Allen head bolt.



**STEP 10** | Loosely secure the Molle panel to the bottom mounting bracket using (3) of the provided M6 Allen head bolts.

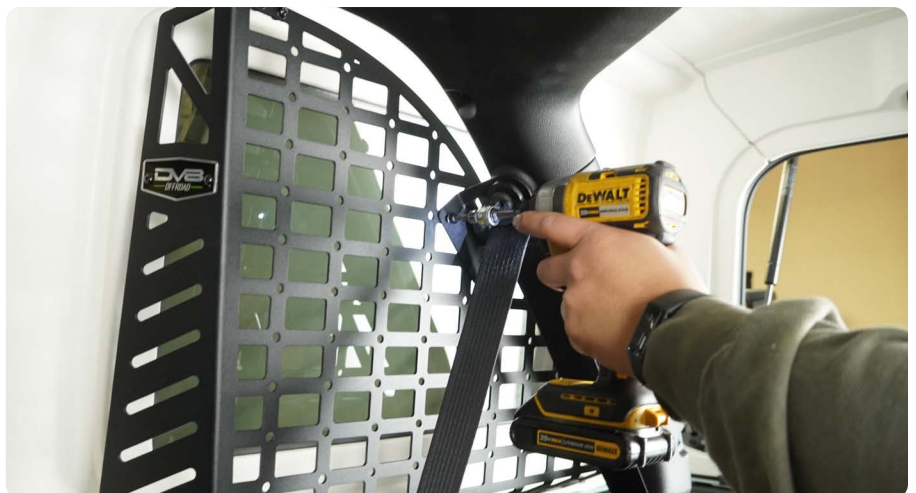
Use (1) M6 flat washer per M6 Allen head bolt.

Use (1) M6 split washer per M6 Allen head bolt.



**STEP 11** | Adjust the molle panel as needed, ensuring that the molle panel does not make contact with the interior trim or hardtop.

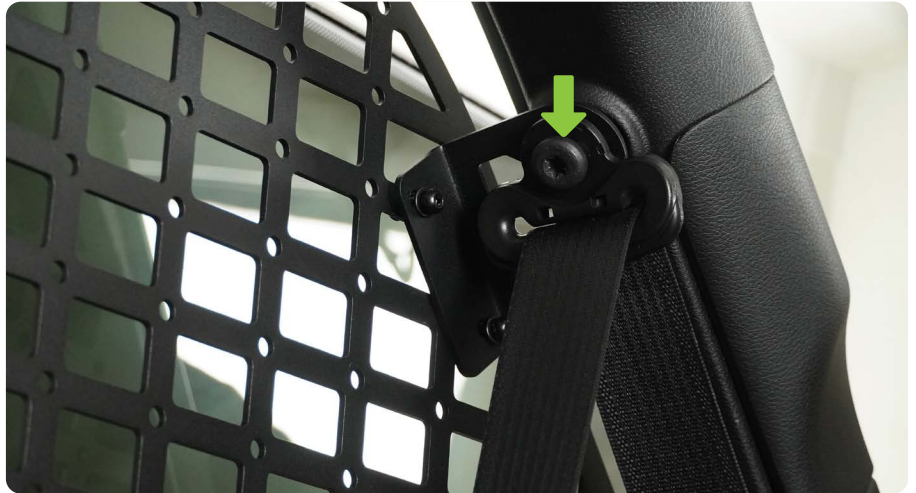
Use a #4 Allen tool to secure the M6 hardware and panel in place.



# INSTALLATION MANUAL



**STEP 12** | Using a T50 torx bit and a torque wrench, torque the seat belt bolt to factory specs. (24 Ft Lbs)



**STEP 13** | Double check that all hardtop and Molle Panel hardware is secure.

Repeat steps 1-13 on the driver side.

Congratulations, installation of the DV8 Pocketed Molle Panels is now complete.

