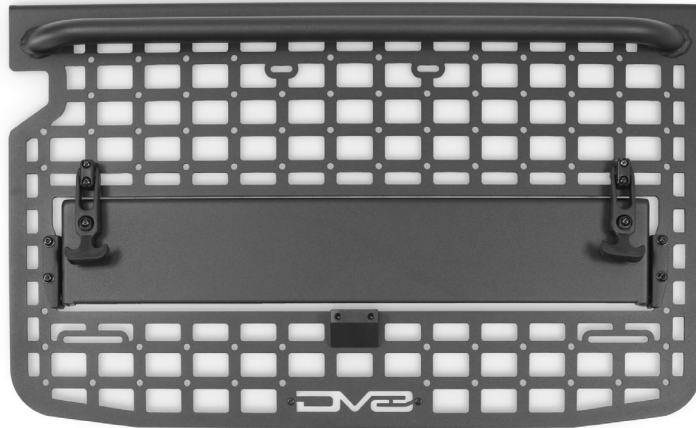


TAILGATE MOLLE PANEL

21+ FORD BRONCO

MPBR-02



TOOLS REQUIRED

- Trim Clip Tool
- 11/32" Drill Bit
- #4 Allen Bit

SKILL LEVEL

- Novice/Intermediate
- 1 (you) to 2 persons

Little skill level required, you can easily install it by yourself however, additional help will be useful.

TIME REQUIRED

- 1 Hour

Time to install this should only take about an hour

WARNINGS/CAUTIONS BEFORE STARTING INSTALLATION

Before you install this kit – Read and understand all instructions, warnings, cautions, and notes contained in this installation instruction guide. Consult your vehicle owner's manual for proper disconnection of electrical and lifting of vehicle if required for installation of this product.

This install may require some technical skills and knowledge of basic mechanical work. If you do not feel that you are capable of performing this install please take this product to a trained professional.

After reading this guide please contact us with any questions or concerns before installing product.
Customer Service: 855-680-9595

DV8 Offroad is not responsible for any bodily injury or harm to you or your vehicle as a result of an improper install.

Proper installation of this kit required knowledge of the factory recommended procedures for removal and installation of original equipment components. We recommend that the factory shop manual and any special tools needed to service your vehicle be on hand during the installation. Installation of this kit without proper knowledge of the factory recommended procedures may affect the performance of these components and the safety of the vehicle

- Always wear eye protection when operating power tools

Inspect all contents of this package to make sure product is not damaged and all installation hardware has been included. If parts are missing from kit, please be prepared to provide the following information

1. Name of purchase location
2. Bar Code on side of box
3. Date above bar code
4. Date inside box cover

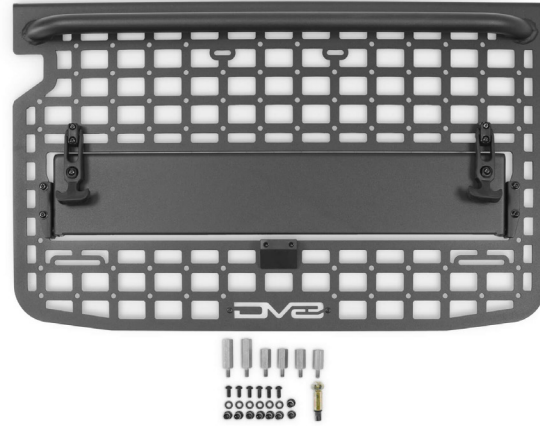


INSTALLATION MANUAL

Begin by unpacking all items and inspecting for missing pieces or damage. If you have any concerns, please contact the company the product was purchased from. Extra hardware may be included with the product.

HARDWARE INCLUDED

- (1) Nutsert Tooling Kit
- (2) Long Bolt Supports
- (6) M6x15 Allen
- (6) M6 Flat Washers
- (8) M6 Nutserts
- (4) Short Bolt Supports



STEP 1 | Remove the trim panel from the tailgate using a trim clip tool.

To remove, unclip the three fasteners along the bottom of the panel and then pull the panel down and away from the tailgate.



INSTALLATION MANUAL

STEP 2 | Use an 11/32" drill bit to enlarge the mounting holes so they can accept the provided M6 nutserts.



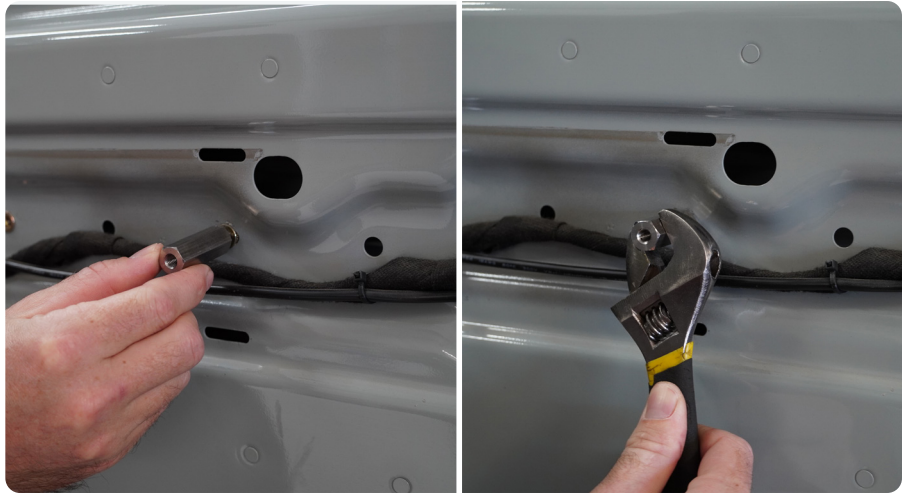
STEP 3 | Install the provided M6 nutserts using a nutsert tool, or the provided nutsert tooling kit.

For steps on how to use the nutsert tooling kit, scroll to the last page.



INSTALLATION MANUAL

STEP 4 | Install the longer bolt supports into the nutserts and tighten using a 13mm socket or wrench.



STEP 5 | Loosely install the molle panel to determine where to place the bottom four nutserts and bolt supports.

Then install the provided M6 nutserts and bolt supports in the necessary locations.

We recommend placing one nutsert on each side in the corner of the slot for maximum strength.



INSTALLATION MANUAL

STEP 6 | Secure the molle panel to the bolt supports using the provided M6 hardware with a #4 allen head.



INSTALLATION MANUAL

STEP 7 | Congrats! You are finished with the install of the 21+ Bronco Tailgate Molle Panel.



INSTALLATION MANUAL

STEP 8 | To use the nutsert tool, slider the M6 washer and spacer onto the provided M6x50 bolt.

Then install a nutsert onto the exposed threads by hand.



STEP 9 | Slide the nutsert tool with the nutsert into the mounting hole. Ensure the flange of the nutsert is flat against the vehicle prior to tightening.



STEP 10 | Use a 12mm wrench to hold the spacer while tightening with a 10mm socket. Tighten slowly until the nutsert is set properly. Do not over tighten.

Nutsert should be “crushed” against the inside of the fender so that it is tight and secure.

When finished remove the nutsert tool using a 10mm socket and repeat as needed.

Note: Be sure to hold the spacer tight so it does not move and scratch paint.

