

## A-Pillar Light Bar Mount

2020+ JEEP JT MOJAVE & 2021+ JEEP JL 392

LBJL-07



### TOOLS REQUIRED

- #5 Allen Head
- T40 Torx Bit
- 10mm Wrench

### SKILL LEVEL

- Novice
- 1 (you) to 2 persons

Little skill level required, you can easily install it by yourself however, additional help will be useful.

### TIME REQUIRED

- 1 Hour

Time to install this should only take about an hour

## WARNINGS/CAUTIONS BEFORE STARTING INSTALLATION

Before you install this kit – Read and understand all instructions, warnings, cautions, and notes contained in this installation instruction guide. Consult your vehicle owner’s manual for proper disconnection of electrical and lifting of vehicle if required for installation of this product.

This install may require some technical skills and knowledge of basic mechanical work. If you do not feel that you are capable of performing this install please take this product to a trained professional.

After reading this guide please contact us with any questions or concerns before installing product.  
Customer Service: 855-680-9595

*DV8 Offroad is not responsible for any bodily injury or harm to you or your vehicle as a result of an improper install.*

Proper installation of this kit required knowledge of the factory recommended procedures for removal and installation of original equipment components. We recommend that the factory shop manual and any special tools needed to service your vehicle be on hand during the installation. Installation of this kit without proper knowledge of the factory recommended procedures may affect the performance of these components and the safety of the vehicle

- Always wear eye protection when operating power tools

*Inspect all contents of this package to make sure product is not damaged and all installation hardware has been included. If parts are missing from kit, please be prepared to provide the following information*

1. Name of purchase location
2. Bar Code on side of box
3. Date above bar code
4. Date inside box cover



# INSTALLATION MANUAL

## STEP 1

Begin by unpacking all items and inspecting for missing pieces or damage. If you have any concerns, please contact the company the product was purchased from.

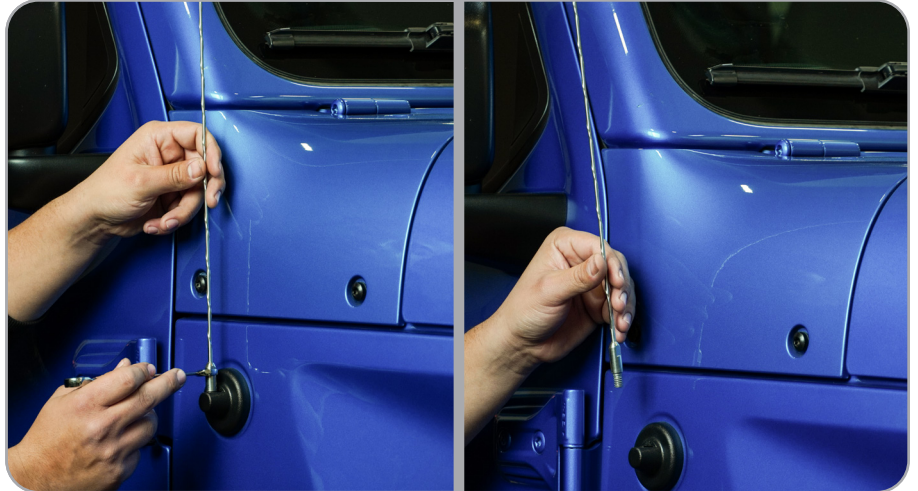
### Hardware Included:

- (2) M8x30mm Allen Head Bolts
- (2) M8 Flat Washers
- (2) M8 Split Washers



## STEP 2

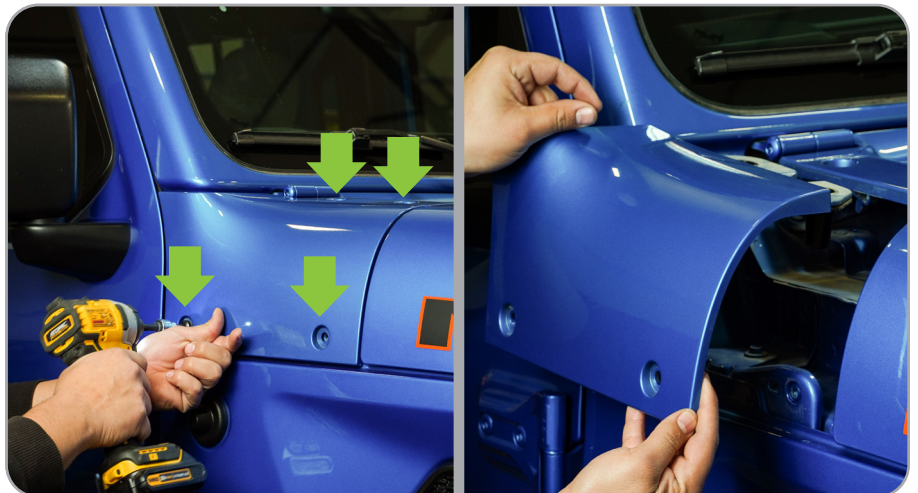
Starting with the passenger side, begin by removing the antenna using your 10mm wrench. This will prevent any damage to your paint when removing the a-pillar panel.



## STEP 3

On the side you intend to run wiring for your light, using your T40 torx bit remove all four bolts located on the a-pillar and cowl, once all bolts are out you may pull off the a-pillar panel.

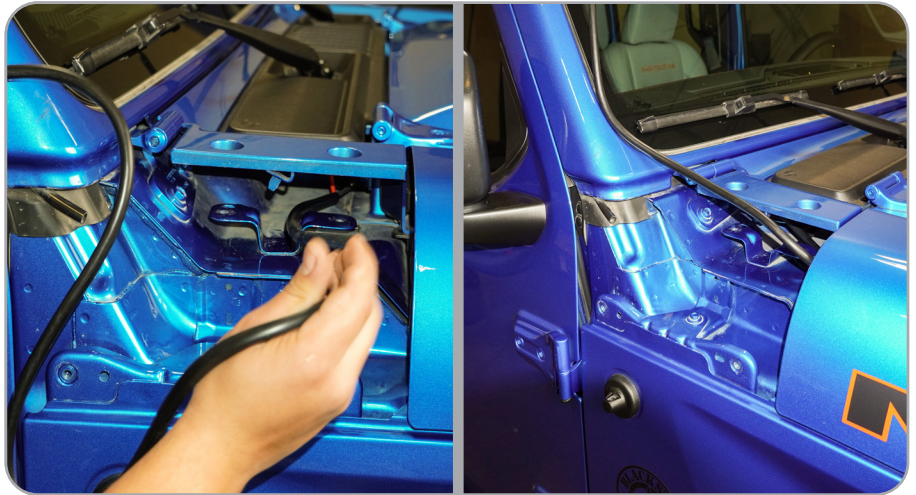
Repeat for opposite side removing the **hardware only**.



# INSTALLATION MANUAL

## STEP 4

Lay the light on the roof of the vehicle. Run the wire for the light along the side of the windshield as if the light was mounted. Place the wiring into the cowl area toward desired direction.



## STEP 5

Once the wires are in place, reinstall the factory a-pillar panel ensuring the wires are routed in between the panels.





# INSTALLATION MANUAL

## STEP 6

Before you mount the brackets to the vehicle, apply the provided foam padding by affixing it to the underside of the bracket.

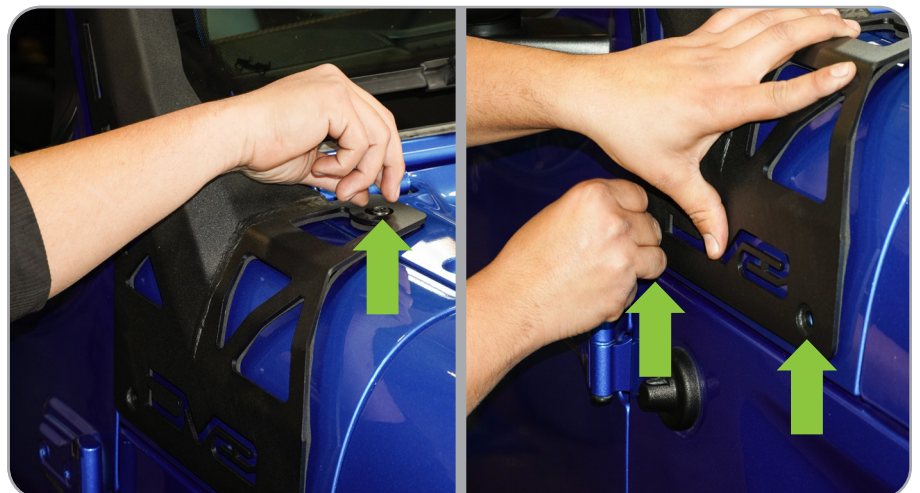
*Note: This is optional; however, we recommend using the foam to protect the paint.*



## STEP 7

Place the bracket onto the panel aligning the hole on the cowl and the two holes on the a-pillar panel. Loosely install the T40 factory bolts onto the top two holes. Using a #5 allen head and the provided bolts, loosely install the two side bolts.

Repeat on other side.





# INSTALLATION MANUAL

## STEP 8

With both brackets mount loosely, using the bolts provided with your light, mount the light bar and secure.

*Note: We are using a DV8 Elite 52" Dual Row Light bar (BE52EW500W)*



## STEP 9

Run the wire behind the bracket along the side of the windshield and using a T40 and #5 allen head, tighten both bracket to vehicle until secure.



## STEP 10

Reinstall your antenna using a 10mm wrench.



# INSTALLATION MANUAL

---

## STEP 11

Ensure all hardware is secured and wire light as desired.

*You are now done with the install of your new DV8 A-Pillar Light Bar Mount.*

