



## DV8 JL Hard Top INSTALL INSTRUCTIONS

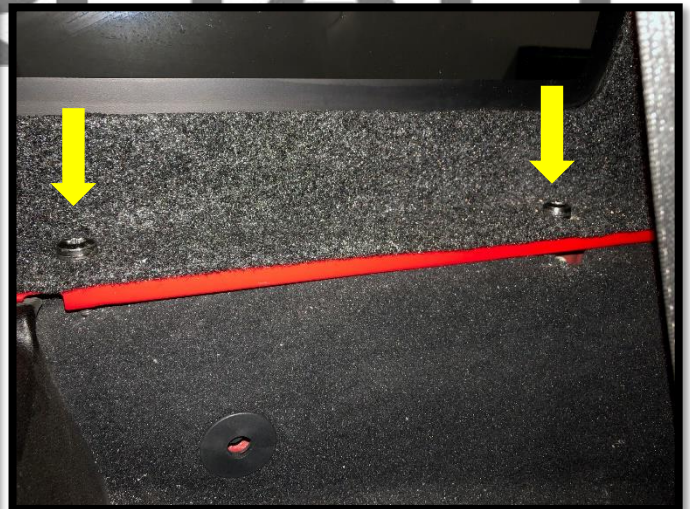
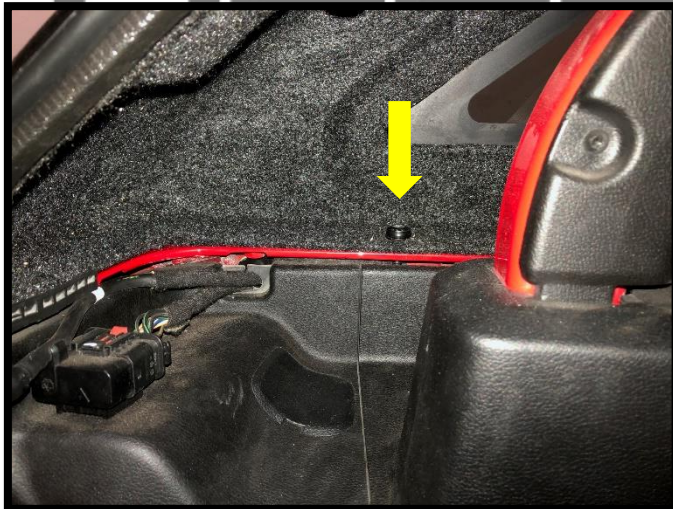
### Parts List:

- Hard Top Front "Targa" Section (1)    □    Flat Washer (6)
- Hardtop Rear Section (1)
- Rear and Side Windows (1 of each)    □    5/16"x1" Mounting Bolts (6)
- Rear Window Hardware (1)
- Rear Section Upper Bolt (2)

**\*READ INSTRUCTIONS ENTIRELY BEFORE INSTALLING PRODUCT\***

.....

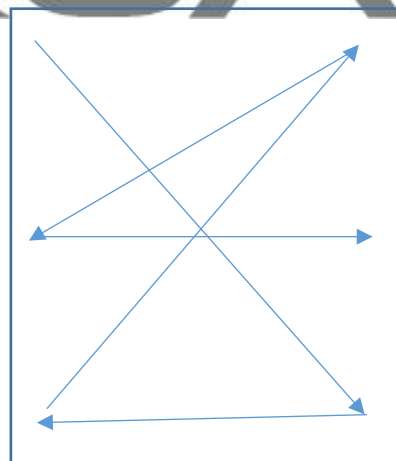
1. Remove the factory top. If the vehicle is equipped with a soft top remove the soft top, all hardware, and brackets. Check all seals to ensure that they are not cracked and do not contain signs of wear.
  - a NOTE: If you JL was equipped with a factory soft top, you will need the hardtop "latch catches". Jeep does not included hardtop "latch catches" on soft tops.
2. Place the rear section of the hard top onto the Jeep and line it up with the holes in the tub for the factory hard top, loosely attach to the tub at the 6 mounting points (3 each side) using the 5/16" x 1" mounting bolts , flat washers, and the mounting nuts provided. You can also use the factory hardware if you prefer. **Do not tighten.**



3. Install the rear section upper bolt shown below and tighten. These two bolts are located where the Targa installs over the B pillar. (4 Door Only)



4. Make sure that the top is aligned evenly on the Jeep. Comparing the distances at the seal with back of the rear door jam shown in figure 4. Make sure that the seal lines up with the top. Tighten the 6 bolts on the tub in a star pattern (Fig 5) while an assistant ensures that the top remains in position, you may need to push on the top like in figure 4 to get it into position.



5. Place the front “Targa” portion of the top onto the Jeep and loosely in position making sure to untuck the rear seal into proper position on both sides. The Targa should sit in the seal, not on top.



6. Be sure to push the front seals into position and make sure that they are not tucked under the top. (Images above)
7. Pull down on the Targa as you slide the L shaped Targa retainer pieces into position. Latch the front OEM style latches down onto the windshield channel the same as an OEM hard top.

Note: If the L shaped Targa retainer pieces are not spaced properly you can add or removed spacers by loosening the bolt holding the retainer piece in place. After you’ve made the adjustment retighten.

8. Look at the top of the hard top and make sure that the seals are aligned and that all of the seals seem evenly compressed. If the seals are not even, loosen all hardware and readjust.
9. In the provided hardware pack, locate the two “boomerang” shaped spacers. Open the front doors, pull factory seal away from the door exposing the painted door frame. Place the spacers on the corners and then reseal the factory seal.

a **NOTE: Do not detach the factory seal from the door.**

If your top is equipped with a wiper blade proceed to step 10, if the top is not equipped with a wiper blade ensure that all hardware is tight and you are finished.

10. Connect both the water hose and the wiring harness to the top. If your top was not originally equipped with a hard top with a wiper you will need to contact Jeep and order the proper parts to install the harness onto the Jeep.



The installation is now finished! If you are having any sealing issues with the top and need help locating the problem or adjusting the top please give us a call at (951) 680 959. Our hours are Monday through Friday 8 a.m. to 5 p.m. Pacific Time.

[info@DV8offroad.com](mailto:info@DV8offroad.com)

Enjoy your new DV8 Offroad Top!

# OFFROAD

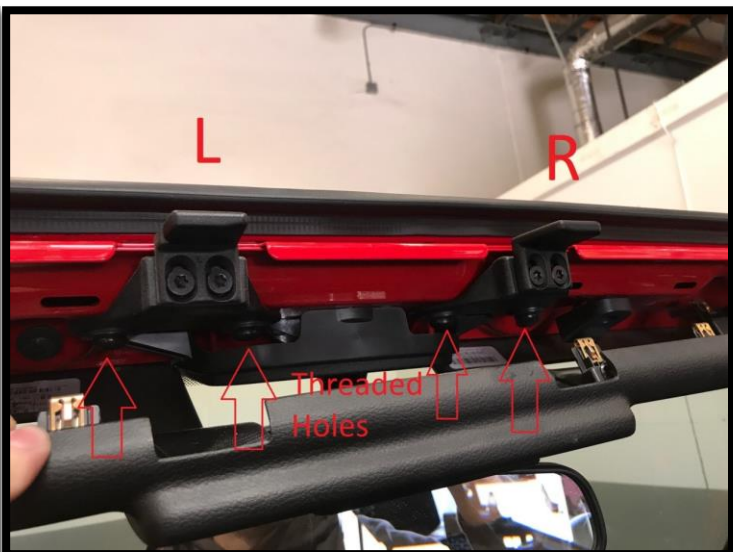
## OEM Hard Top Bracket Installation

Pull down the factory plastic molding at the top of the windshield channel. This is held in by metal clips and can be pulled down with a slight amount of force. (Don't pull to hard, if necessary use a plastic prying tool or a screwdriver wrapped in tape or a towel to prevent marring.)

The ends of this panel are held in by bolts, after pulling the center portion down it is not necessary to loosen these bolts to access the bracket locations but if you want to then you can.



The front brackets will look like the photo below and will be marked with the letter L and R. The L bracket goes towards the driver's side and the R bracket goes to the passenger side. There will be threaded holes where these will install. The hardware that was sent will contain 4 bolts to connect these front 2 brackets. There may be paint in the holes that makes the installation of the bolts more difficult.



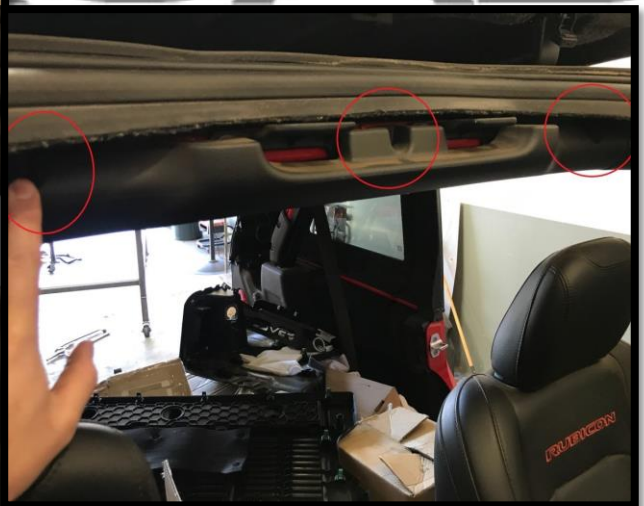
Tighten the 4 bolts to about 25 ft lbs

Replace the molding that you just removed by inserting the metal clips into the slots in the windshield frame.

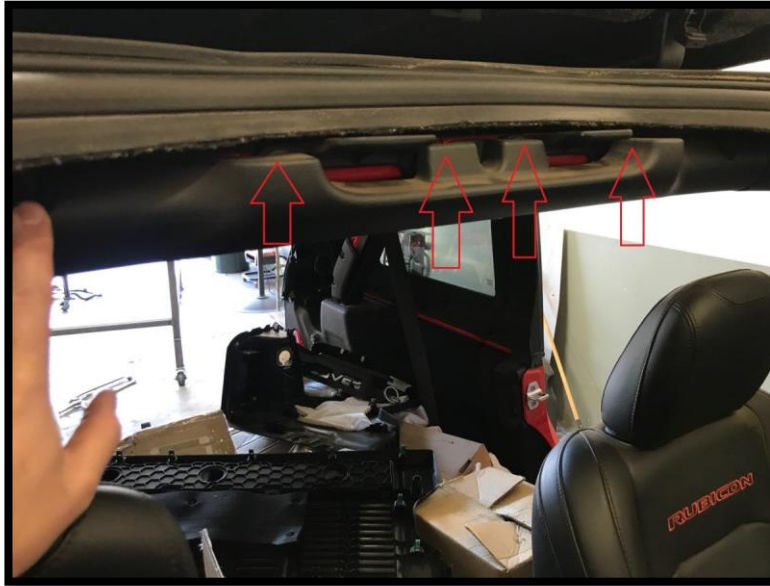
They will all need to be lined up at once for the piece to go back on. Push firmly until it snaps back into place.



For the rear 2 brackets there are 3 bolts that need to be removed that will allow you to access the bolt holes for the rear brackets (see below). Again there is a left and a right. They should be configured so that the holes are toward the outside of the Jeep (see below)



Install the 2 brackets using the supplied bolts into the OEM threaded holes.



Replace the plastic piece by reinstalling the 3 bolts that you previously removed

