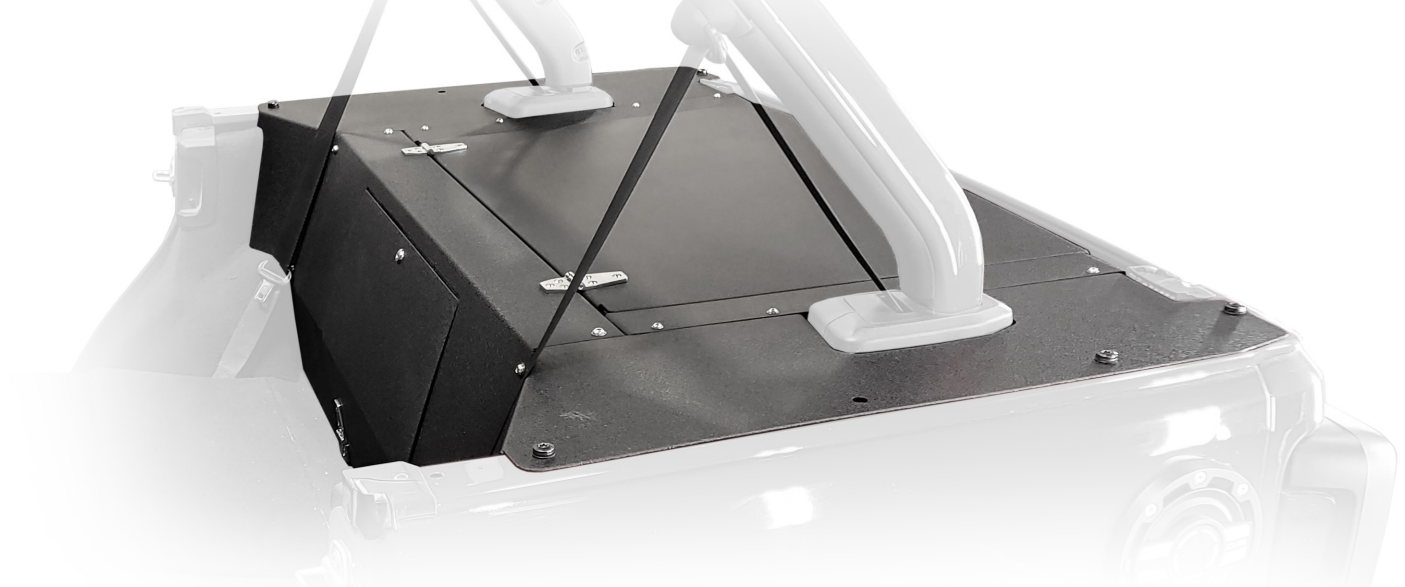


## JLRS-01

2018+ JEEP JL REAR  
STORAGE COMPARTMENT



### TOOLS REQUIRED

- T-50 Torque head socket
- 3mm, 4mm, 5mm Allen head sockets
- 8mm, 10mm, 13mm wrenches
- Rubber Mallet
- Metal Snips
- Safety Glasses

### SKILL LEVEL

- Novice/Intermediate
  - 1(you) to 2 persons
- Little skill level required, you can easily install it by yourself however additional help will be useful

### TIME REQUIRED

- 1 Hour
- Time to install this cover should only take about an hour.

## WARNINGS/CAUTIONS BEFORE STARTING INSTALLATION

**Before you install this kit – Read and understand all instructions, warnings, cautions, and notes contained in this installation instruction guide. Consult your vehicle owner's manual for proper disconnection of electrical and lifting of vehicle if required for installation of this product.**

This install may require some technical skills and knowledge of basic mechanical work. If you do not feel that you are capable of performing this install please take this product to a trained professional.

After reading this guide please contact us with any questions or concerns before installing product.  
Customer Service: 855-680-9595

**DV8 Offroad is not responsible for any bodily injury or harm to you or your vehicle as a result of an improper install.**

Proper installation of this kit requires knowledge of the factory recommended procedures for removal and installation of original equipment components. We recommend that the factory shop manual and any special tools needed to service your vehicle be on hand during the installation. Installation of this kit without proper knowledge of the factory recommended procedures may affect the performance of these components and the safety of the vehicle.

• *Always wear eye protection when operating power tools.* •

**Inspect all contents of this package to make sure product is not damaged and all installation hardware has been included. If parts are missing from kit, please be prepared to provide the following information:**

1. Name of purchase location
2. Bar Code on side of box
3. Date above bar code
4. Date inside box cover

# INSTALLATION MANUAL

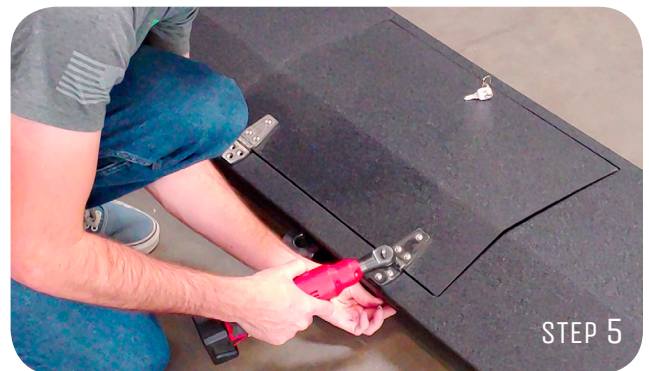
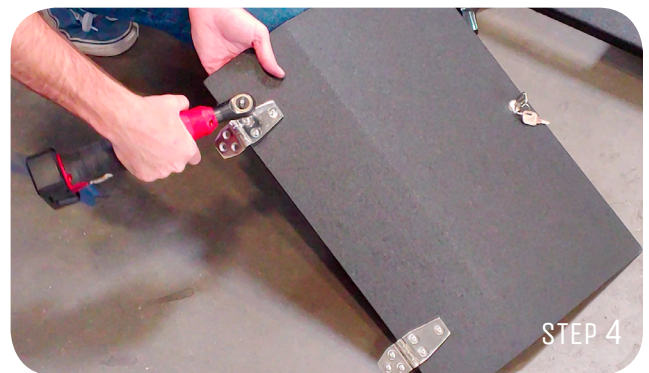
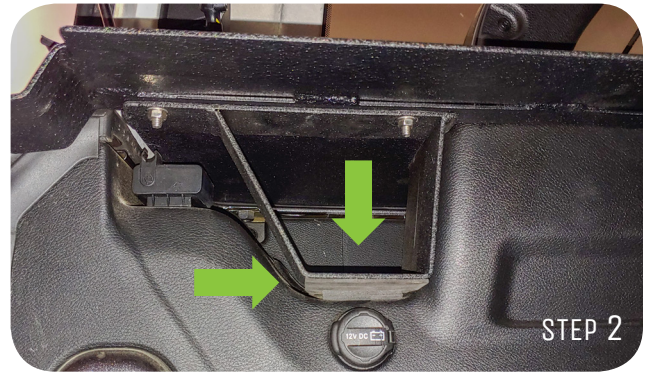
**STEP 1:** Prior to installation you must remove your hard top or soft top. Keep the T50 bolts close by as you will use them in step 3.

**STEP 2:** Included in your hardware find the rubber padding. The padding must be installed onto the bottom feet of the main side mounts.

**STEP 3:** Using your factory hardtop bolts loosely install the side panels.

**STEP 4:** Install hinges onto the small panel using the supplied hardware. Install the door onto the rear panel.

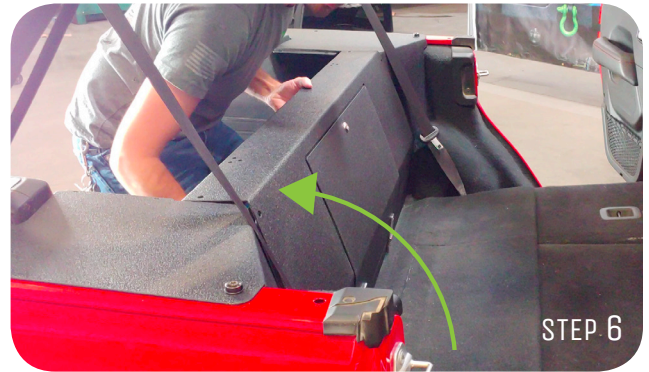
**STEP 5:** Install the door onto the rear panel.



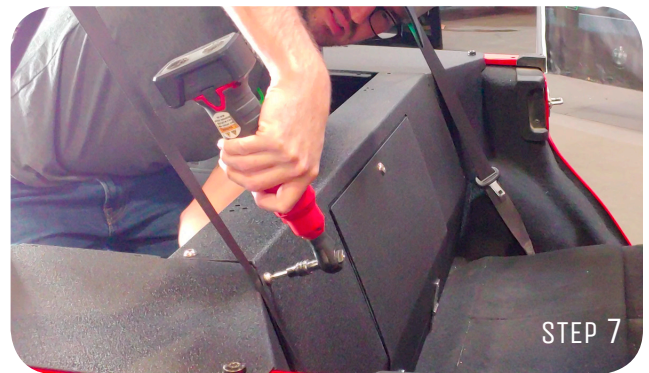
# INSTALLATION MANUAL

**STEP 6:** Place the panel into place with the bottom side first and then rotate the top of it into position over the side panels.

If the panel does not lie flat this is normal until all hardware is installed.



**STEP 7:** Using the supplied M8 Allen hardware secure the rear panel into place.





# INSTALLATION MANUAL

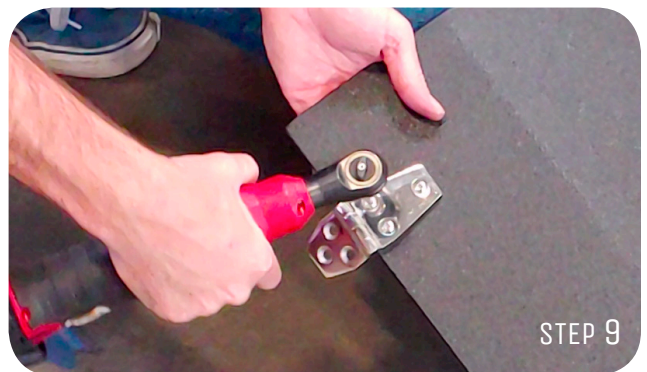
**STEP 8:** Using the supplied M6 hardware install the cover side supports onto the side mounts.



**Note:** There is a hidden Bolt on the underside of the supports do not miss this bolt.



**STEP 9:** Install the hinges onto the main cover/lid using the supplied hardware.

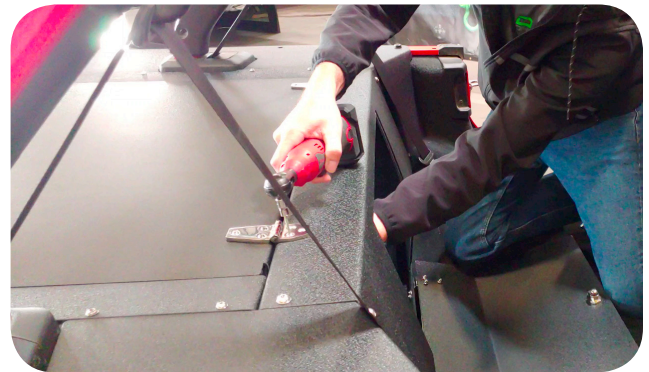


# INSTALLATION MANUAL

**STEP 10:** Install the main cover/lid ensuring that there is an even gap along the hinge side of the panel.



**Note:** Close the lid and ensure that there is even spacing along The sides as well.



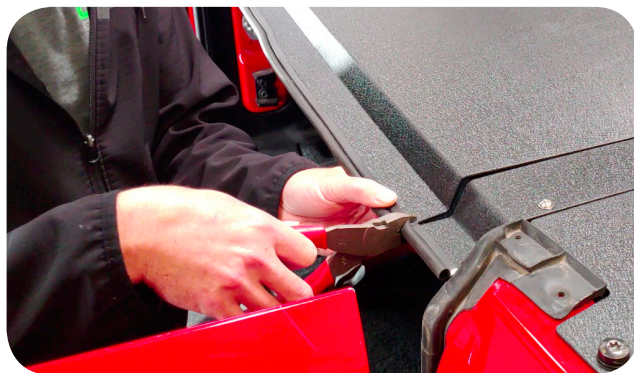
**STEP 11:** The two main Side mounts that utilize the factory hardtop bolts can now be tightened down





# INSTALLATION MANUAL

STEP 12: Using the rubber mallet place the rubber gasket onto the front edge of the main cover/lid trimming off the excess and then use the extra for the continued front edge of the Side support mounts.



STEP 13: Install the two gas shocks onto the lid with the body of the shocks pointing upwards.



STEP 14: **You're done!** Insure all hardware is secure and that both the rear door and main cover/lid work properly.

