

## SPEC SERIES TUBE FENDERS

2018+ JEEP WRANGLER JL  
FDJL-06



### TOOLS REQUIRED

- Trim Clip Tool
- #5 Allen Bit
- #4 "L" or "T" Shaped Allen Tool (Ball End Recommended)
- 10, 12, 13mm Wrench
- Angle Grinder or Cutting Tool of Choice
- Spray Paint
- Zip Ties (Optional)
- Power Ratchet (Option- Highly Recommended)

### SKILL LEVEL

- Novice/Intermediate
  - 1 (you) to 2 persons
- Little skill level required, you can easily install it by yourself however, additional help will be useful.

### TIME REQUIRED

- 2.5 Hours
- Time to install this should only take about two and a half hours.

## WARNINGS/CAUTIONS BEFORE STARTING INSTALLATION

Before you install this kit – Read and understand all instructions, warnings, cautions, and notes contained in this installation instruction guide. Consult your vehicle owner's manual for proper disconnection of electrical and lifting of vehicle if required for installation of this product.

This install may require some technical skills and knowledge of basic mechanical work. If you do not feel that you are capable of performing this install please take this product to a trained professional.

After reading this guide please contact us with any questions or concerns before installing product.  
Customer Service: 855-680-9595

*DV8 Offroad is not responsible for any bodily injury or harm to you or your vehicle as a result of an improper install.*

Proper installation of this kit required knowledge of the factory recommended procedures for removal and installation of original equipment components. We recommend that the factory shop manual and any special tools needed to service your vehicle be on hand during the installation. Installation of this kit without proper knowledge of the factory recommended procedures may affect the performance of these components and the safety of the vehicle

- Always wear eye protection when operating power tools

*Inspect all contents of this package to make sure product is not damaged and all installation hardware has been included. If parts are missing from kit, please be prepared to provide the following information*

1. Name of purchase location
2. Bar Code on side of box
3. Date above bar code
4. Date inside box cover

# INSTALLATION MANUAL

## FRONT UNINSTALL

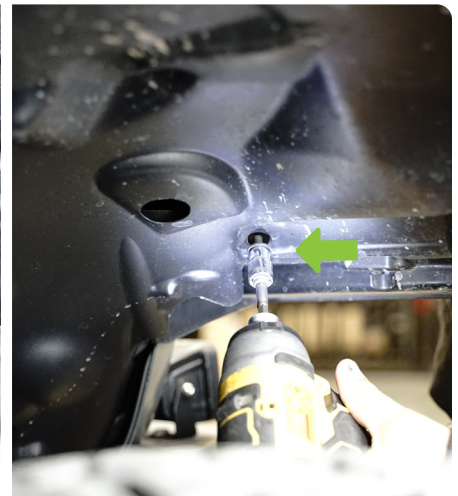
**STEP 1** | Use a 10mm socket to remove the bolts along the top and at the front of the inner fender.

Use a trim clip tool to remove the clips on interior of the inner fender.

Use a trim clip tool to remove the clips running along the outside, securing the inner fender to the vehicle.

Remove inner fender by pulling down, then out.

*Note: Pictured are un-install and installation of the passenger side fender.*



# INSTALLATION MANUAL

**STEP 2 |** Unplug the turn signal indicator by pulling the red release tab out and pulling.



**STEP 3 |** Use a 10mm socket to remove the bolt securing the fender to the vehicle.

Then, remove the fender by pulling away from the vehicle to release the clips.

Be sure to pull “straight” away from the vehicle to avoid breaking clips.



**STEP 4 |** Use a trim clip tool to remove the factory clips along the fender.

Repeat process for the other side.



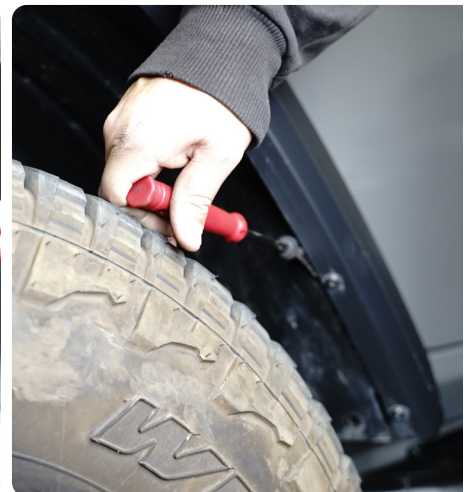
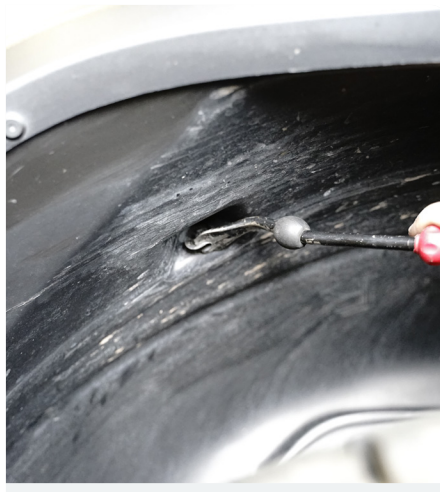
# INSTALLATION **MANUAL**

## REAR UNINSTALL

**STEP 5** | Use a trim clip tool to remove the clips located along the interior of the inner fender.

Then remove the clips securing the inner fender to the vehicle running along the outside edge of the fender flare.

Remove fender by pulling down then out.



## INSTALLATION MANUAL

**STEP 6** | Remove the fender flare by pulling directly away from the vehicle. Be sure to pull “straight” away from the vehicle to prevent breaking clips.



**STEP 7** | Use a trim clip tool to remove the clips along the edge of the fender.

Repeat process for the other side.



# INSTALLATION MANUAL

Begin by unpacking all items and inspecting for missing pieces or damage. If you have any concerns, please contact the company the product was purchased from. Extra hardware may be included with the product.

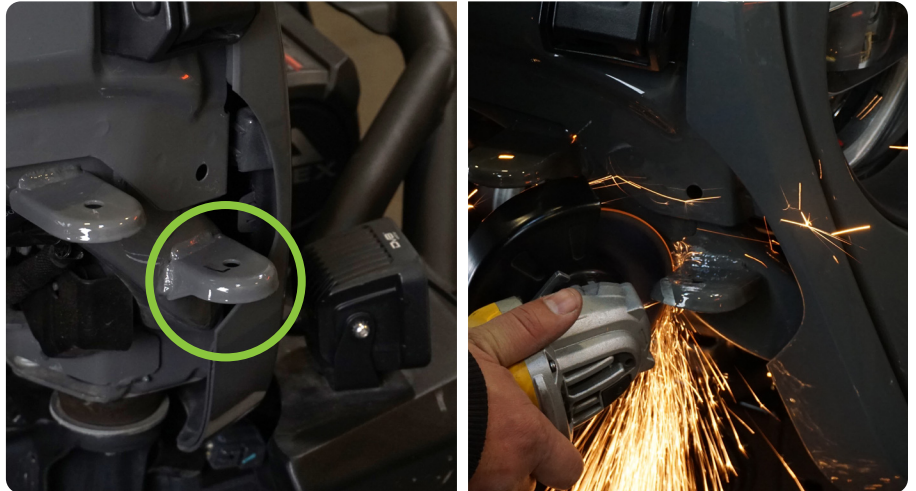
## HARDWARE INCLUDED

- (42) M6x20 Allen
- (2) M6x25 Allen
- (44) M6 Nutserts
- (46) M6 Flat Washers
- (4) M6 Serrated Nuts
- (1) Nutsert Tool



## FRONT INSTALL

**STEP 8** | Cut the front fender mount off and grind it down so it is flush with the vehicle. Paint is recommended on the bare steel to prevent rust.



**STEP 9** | Install the provided nutserts using a nutsert tool. If you do not own a nutsert tool, we provide one with our kit.

For instructions on how to use the nutsert tool, scroll to the last page.

*Tip: Hold up the fender the vehicle as a guide to determine which holes require a nutsert.*



# INSTALLATION MANUAL

**STEP 10** | Install the gaskets onto the fender.

The gaskets are notched to line up with the mounting holes on each fender.

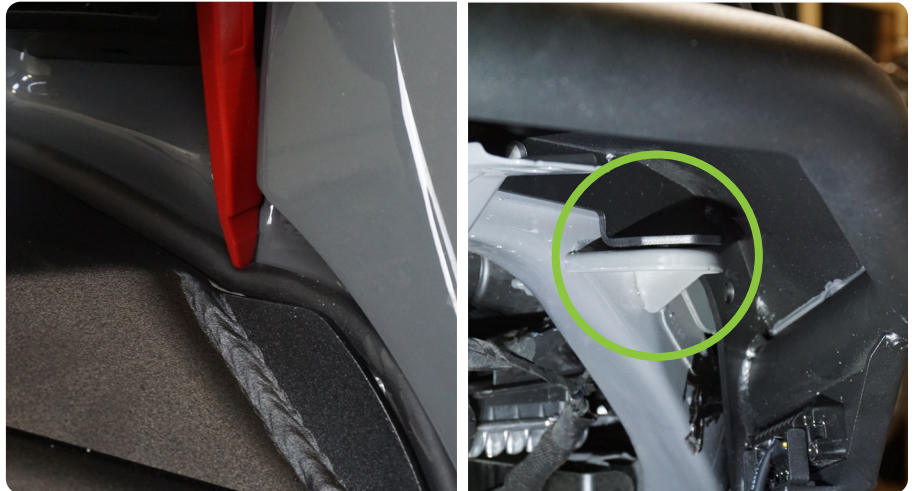


Install the fender flare onto the vehicle using the provided M6x20 hardware with a 4mm allen bit.

Secure the front mounting support using the supplied M6x25 hardware with a 4mm allen bit and 10mm wrench.

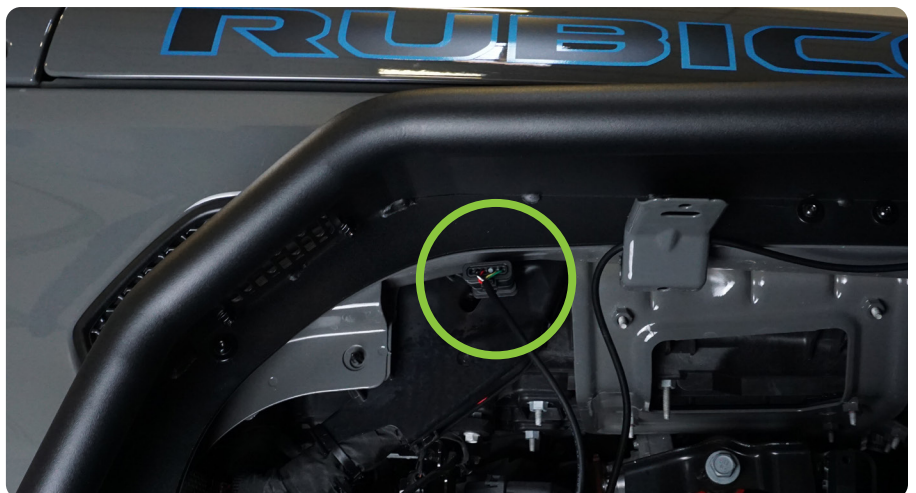
During install, check the gasket on the fenders and tuck away any extra gasket using a trim clip tool.

*Note: Assistance is recommended to prevent injury and damage to the product or vehicle.*



**STEP 11** | Route and secure the wiring to your preference and install the new turn signal into the factory connector.

Repeat process for the other side.



# INSTALLATION MANUAL

## REAR INSTALL

Use the provided nutsert tool with 12mm wrench and 10mm socket to install the provided nutserts.

If these fenders are being paired with DV8 rear inner fenders, leave the circled mounting hole without a nutsert, as this mounting hole will need to be left open to complete the inner fender install guide.

Part Number: INFEND-03RB

Tip: Place the fender on the vehicle as a guide to determine which holes require a nutsert.



Install the fender flare onto the vehicle using the provided M6 hardware with a 4mm allen bit.

*Installers Tip: Power ratchet and low profile ball end allen tool highly recommended for ease of install.*

*Note: Assistance is recommended to prevent injury or damage to the product and vehicle.*

Double check all hardware is secure.

Repeat process for other side.





# INSTALLATION MANUAL

**STEP 12** | Check the gasket on both fenders after install and tuck away any extra gasket using a trim clip tool.

Double check all hardware is secure.

*NOTE: If the Jeep was not equipped with OEM LED lighting, then aftermarket/dealership programming may be necessary to access all LED functions.*

Repeat process for other side.



**STEP 13** | Congrats! You are finished with the install of the 2018+ Jeep Wrangler JL Tube Fenders!



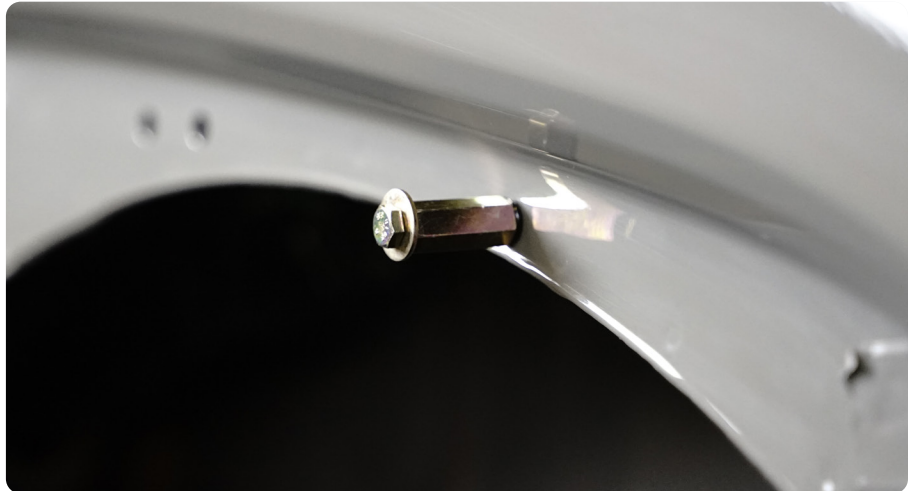
## INSTALLATION MANUAL

**STEP 14** | To use the nutsert tool, slider the M6 washer and spacer onto the provided M6x50 bolt.

Then install a nutsert onto the exposed threads by hand.



**STEP 15** | Slide the nutsert tool with the nutsert into the mounting hole. Ensure the flange of the nutsert is flat against the vehicle prior to tightening.



**STEP 16** | Use a 12mm wrench to hold the spacer while tightening with a 10mm socket. Tighten slowly until the nutsert is set properly. Do not over tighten.

Nutsert should be “crushed” against the inside of the fender so that it is tight and secure.

When finished remove the nutsert tool using a 10mm socket and repeat as needed.

*Note: Be sure to hold the spacer tight so it does not move and scratch paint.*

