

FULL WIDTH FRONT BUMPER

18+/20+ JEEP WRANGLER JL & GLADIATOR JT

FBJL-12



TOOLS REQUIRED

- 19mm Deep Socket
- 13, 16mm Socket
- 17mm Wrench
- #6 Allen Bit
- Trim Clip Tool

SKILL LEVEL

- Novice/Intermediate
- 2 persons

Little skill level required, however, additional help is required for removal and installation of bumpers.

TIME REQUIRED

- 3 Hours

Time to install this should take about three hours.

WARNINGS/CAUTIONS BEFORE STARTING INSTALLATION

Before you install this kit – Read and understand all instructions, warnings, cautions, and notes contained in this installation instruction guide. Consult your vehicle owner's manual for proper disconnection of electrical and lifting of vehicle if required for installation of this product.

This install may require some technical skills and knowledge of basic mechanical work. If you do not feel that you are capable of performing this install please take this product to a trained professional.

After reading this guide please contact us with any questions or concerns before installing product.
Customer Service: 855-680-9595

DV8 Offroad is not responsible for any bodily injury or harm to you or your vehicle as a result of an improper install.

Proper installation of this kit required knowledge of the factory recommended procedures for removal and installation of original equipment components. We recommend that the factory shop manual and any special tools needed to service your vehicle be on hand during the installation. Installation of this kit without proper knowledge of the factory recommended procedures may affect the performance of these components and the safety of the vehicle

- Always wear eye protection when operating power tools

Inspect all contents of this package to make sure product is not damaged and all installation hardware has been included. If parts are missing from kit, please be prepared to provide the following information

1. Name of purchase location
2. Bar Code on side of box
3. Date above bar code
4. Date inside box cover



INSTALLATION MANUAL

STEP 1 | UNINSTALL OF FRONT BUMPER

Using a push pin removal tool, remove the two push pins securing the plastic trim piece under the grille and behind the bumper.



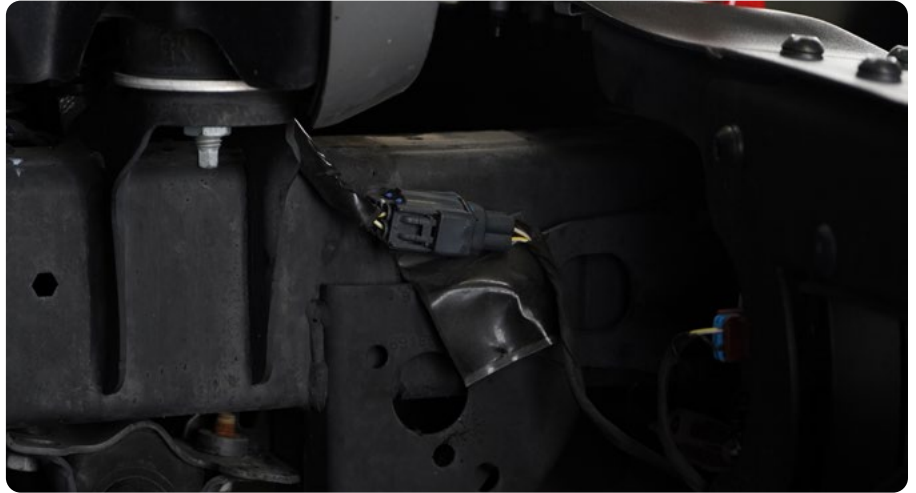
INSTALLATION MANUAL

STEP 2 | Using a 13mm socket, remove the seven bolts securing the skid plate to the vehicle, and set off to the side.



INSTALLATION MANUAL

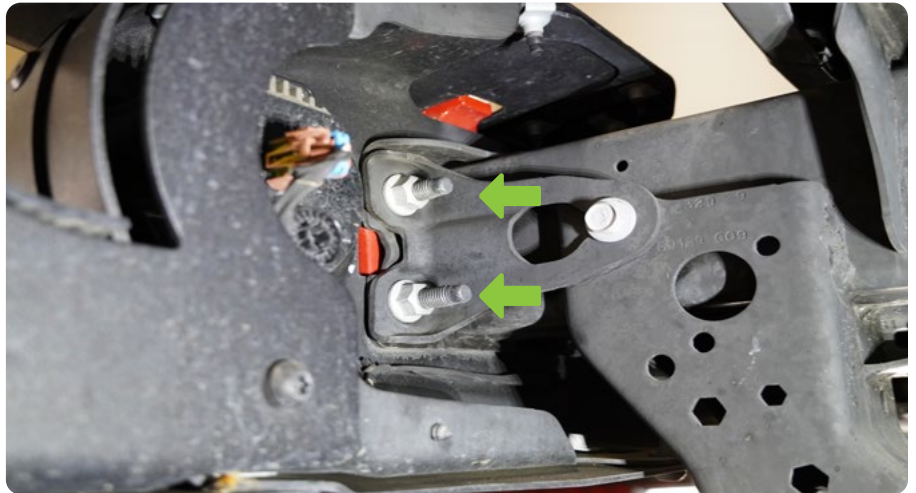
STEP 3 | Disconnect the fog lights by unplugging the wiring connectors located on passenger frame rail directly behind the bumper.



INSTALLATION MANUAL

STEP 4 | Using a 19mm deep socket, remove the eight nuts securing the bumper, located directly behind it. Once all nuts are removed, pull bumper from the vehicle and set off to the side.

Note: Once nuts are removed, bumper can become loose and fall. Ensure bumper is secure. Assistance is recommended to prevent injury and damage to the vehicle or product.



STEP 5 | At this point, frame rails should be visible and the vehicle should be ready for installation of an aftermarket bumper.



INSTALLATION MANUAL

Begin by unpacking all items and inspecting for missing pieces or damage. If you have any concerns, please contact the company the product was purchased from. Extra hardware may be included with the hardware kit.

HARDWARE INCLUDED

- (18) M10x30 Hex
- (2) M10x40 Allen
- (2) M10x30 Allen
- (10) M10 Flat Washers (Large)
- (32) M10 Flat Washers
- (4) M10 Spring Washers
- (20) M10 Nylon Lock Nuts
- (4) M10 Flat Nuts



STEP 6 | Install the flat nuts onto the bumper by pressing them into place.

These may require some force to install.



INSTALLATION MANUAL

STEP 7 | Peel the provided foam and install it by pressing it into place on the wings.

Repeat process for other side.



STEP 8 | Install the wings using the provided M10x30 Hex Hardware with a 16mm socket and 17mm wrench.

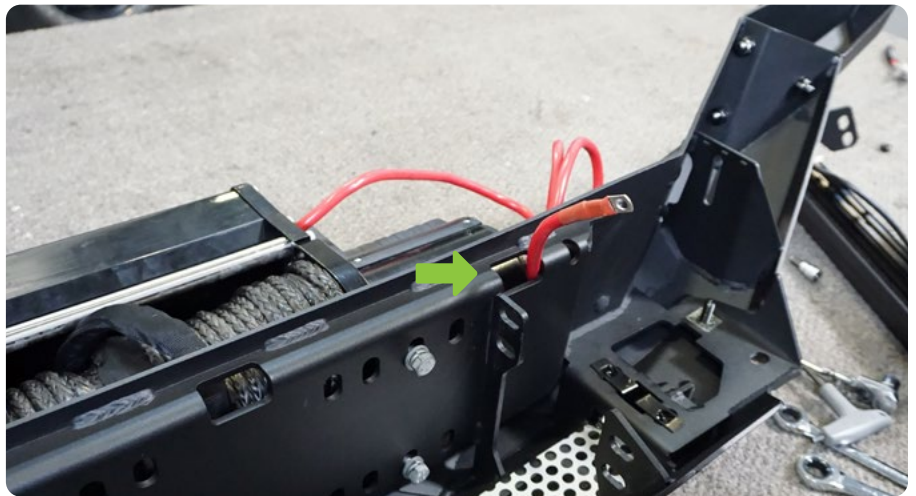
(Use hex head hardware unless specified. The allen head hardware will be used at the end of the install.)



INSTALLATION MANUAL

STEP 9 | If you are installing a winch, do so at this time using the hardware provided with the winch.

We provided cutouts in the winch plate to cleanly route wiring for a winch.



INSTALLATION MANUAL

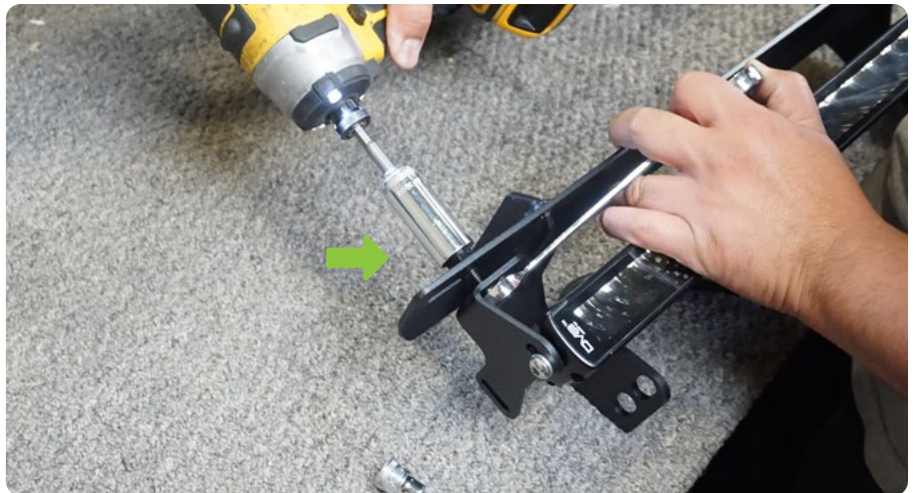
STEP 10 | If you are installing a light bar, install the light bar mounts onto the light using the hardware provided with the light bar.

Note: We are using a 20" single row elite series light bar for our install.

Part Number: BE20SW105W



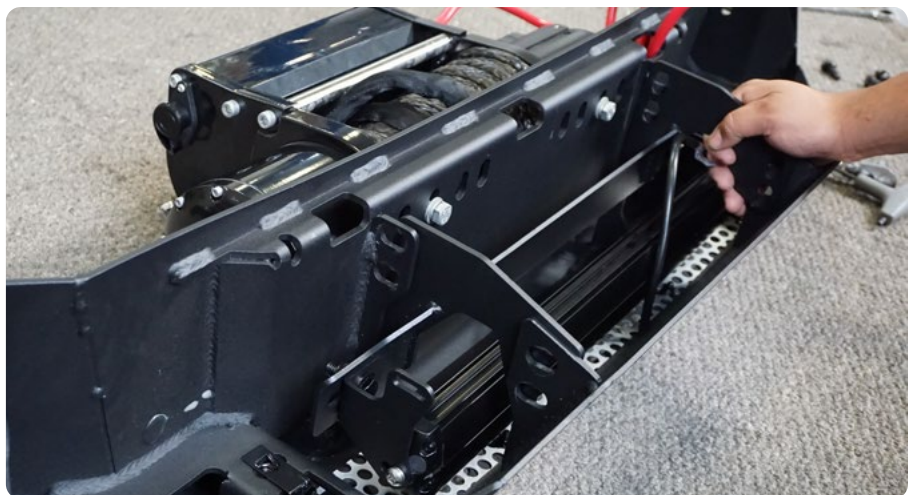
STEP 12 | Install the light bar mounts to the cross brace using the provided M10 hardware with a 16mm socket and 17mm wrench.



STEP 11 | Perform a test fit of the cross bar without installing any hardware to determine if the light bar needs to be adjusted.

When satisfied with the fitment, install the cross brace onto the bumper using the provided M10 hardware with a 16mm socket and a 17mm wrench.

There are eight bolts to secure the cross brace.



INSTALLATION MANUAL

STEP 13 | If you are installing pod lights, do so at this time using the hardware provided with the light.

Note: We are using 3" elite series pod lights for our install.

Part Number: BE3EW40W



STEP 14 | With assistance, lift the bumper to the vehicle while aligning the studs to the mounting holes.

Use the provided M10x30 hardware to secure the bumper. Allen head hardware is provided for the outer corners for a clean look.

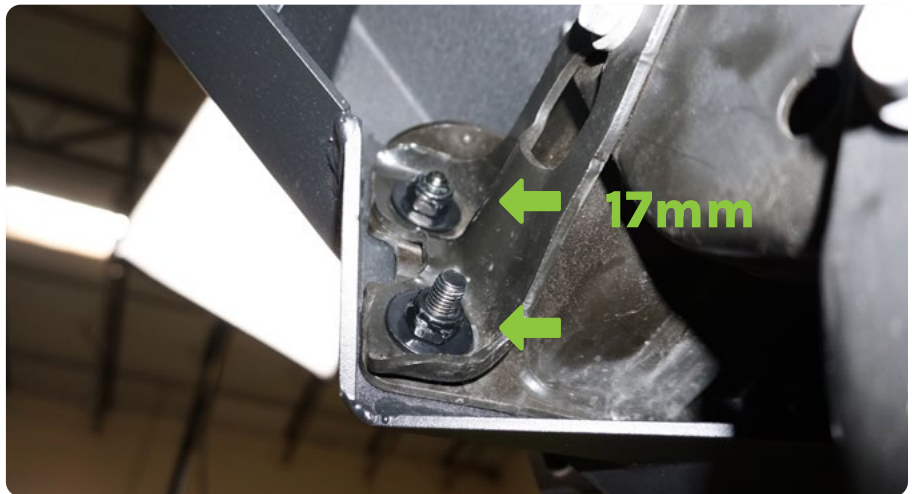
Ensure the wiring is routed securely and will not be pinched during the install.

Note: Assistance is recommended to prevent injury and damage to the product or vehicle.



INSTALLATION MANUAL

STEP 15 | Secure the outer hardware using a 17mm wrench and #6 allen bit, and the inner hardware using a 16mm socket.



STEP 16 | If you are installing a fairlead, do so at this time using the hardware provided with the fairlead.



INSTALLATION MANUAL

STEP 17 | Congrats! You are finished with the install of the 18+/20+ JL/JT Wrangler/Gladiator Full Width Front Bumper.

