

MID WIDTH FRONT BUMPER

18+/20+ JEEP WRANGLER JL & GLADIATOR JT

FBJL-07



TOOLS REQUIRED

- 13mm, 16mm, 18mm, 19mm Socket
- 19mm Deep Socket
- 13mm Wrench (2x)
- 5mm, 6mm Allen Bit
- Trim Clip Tool

SKILL LEVEL

- Novice/Intermediate
- 2 persons

Little skill level required, you can easily install it by yourself however, additional help is required for removal and installation of bumpers.

TIME REQUIRED

- 3 Hours

Time to install this should take about three hours.

WARNINGS/CAUTIONS BEFORE STARTING INSTALLATION

Before you install this kit – Read and understand all instructions, warnings, cautions, and notes contained in this installation instruction guide. Consult your vehicle owner's manual for proper disconnection of electrical and lifting of vehicle if required for installation of this product.

This install may require some technical skills and knowledge of basic mechanical work. If you do not feel that you are capable of performing this install please take this product to a trained professional.

After reading this guide please contact us with any questions or concerns before installing product.
Customer Service: 855-680-9595

DV8 Offroad is not responsible for any bodily injury or harm to you or your vehicle as a result of an improper install.

Proper installation of this kit required knowledge of the factory recommended procedures for removal and installation of original equipment components. We recommend that the factory shop manual and any special tools needed to service your vehicle be on hand during the installation. Installation of this kit without proper knowledge of the factory recommended procedures may affect the performance of these components and the safety of the vehicle

- Always wear eye protection when operating power tools

Inspect all contents of this package to make sure product is not damaged and all installation hardware has been included. If parts are missing from kit, please be prepared to provide the following information

1. Name of purchase location
2. Bar Code on side of box
3. Date above bar code
4. Date inside box cover



INSTALLATION **MANUAL**

STEP 1 | *UNINSTALL OF FRONT BUMPER*

Using a push pin removal tool, remove the two push pins securing the plastic trim piece under the grille and behind the bumper.



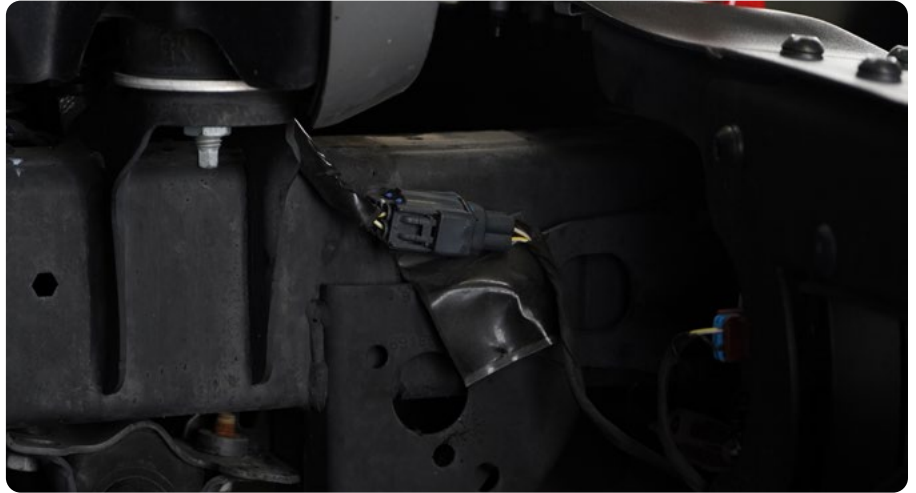
INSTALLATION MANUAL

STEP 2 | Using a 13mm socket, remove the seven bolts securing the skid plate to the vehicle, and set off to the side.



INSTALLATION MANUAL

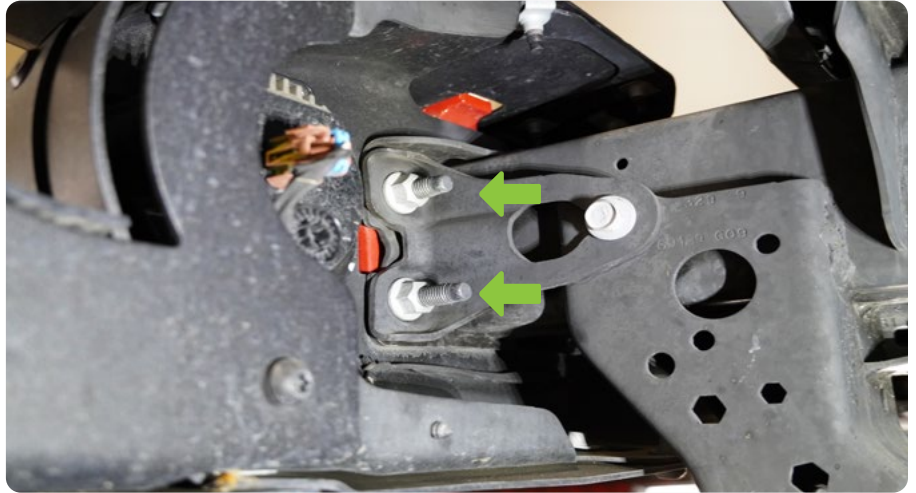
STEP 3 | Disconnect the fog lights by unplugging the wiring connectors located on passenger frame rail directly behind the bumper.



INSTALLATION MANUAL

STEP 4 | Using a 19mm deep socket, remove the eight nuts securing the bumper, located directly behind it. Once all nuts are removed, pull bumper from the vehicle and set off to the side.

Note: Once nuts are removed, bumper can become loose and fall. Ensure bumper is secure. Assistance is recommended to prevent injury and damage to the vehicle or product.



STEP 5 | At this point, frame rails should be visible and the vehicle should be ready for installation of an aftermarket bumper.

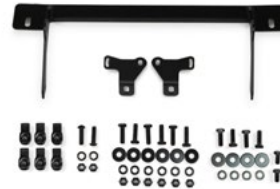


INSTALLATION MANUAL

Begin by unpacking all items and inspecting for missing pieces or damage. If you have any concerns, please contact the company the product was purchased from. Extra hardware may be included with the hardware kit.

HARDWARE INCLUDED

- (6) M10x35 Hex
- (4) M10x30 Hex
- (2) M10x20 Hex
- (2) M10x35 Allen
- (10) M10 Large Washers
- (12) M10 Washers
- (8) M10 Nylon Nuts
- (6) M10 Flat Nuts



STEP 6 | Install the lightbar mounts onto the cross brace loosely using the shorter M10x20 hardware.

There are three different length hardware included in the kit, and will be used for the following purposes.

M10x35: (Longest) Securing the bumper to the vehicle.

M10x30: (Mid-Length) Securing the crossbrace to the bumper.

M10x20: (Shortest)



STEP 7 | Install the light bar onto the mounts using the hardware provided with the light.

Center the light mounts as best as possible, then secure all hardware so that the light does not move freely, but can be adjusted.



INSTALLATION MANUAL

STEP 8 | Place the cross brace and light bar into the bumper and loosely secure the brace using the provided M10x30 hardware with a 17mm and 16mm socket/wrench.

Check the placement of the light bar on the bumper and determine if adjustment is necessary.

When the light is adjusted properly, remove the cross brace/ light from the vehicle and finish securing the light bar to the mount.



INSTALLATION MANUAL

STEP 9 | With the light secured to the mount, re-install the crossbrace using the M10x30 hardware with a 16mm and 17mm wrench/socket.



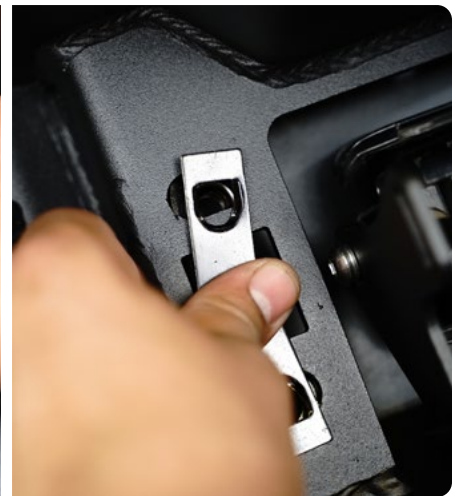
STEP 11 | Check one more time that the light is centered before continuing.

Finish securing the light bar mounts to the cross brace using a 16mm and 17mm wrench.



STEP 10 | Install the flat nuts onto the bumper by pressing them into place.

These may require some force to install.



INSTALLATION MANUAL

STEP 12 | If you are installing pod lights, do so at this time using the hardware provided with the light.

Note: We are using 3" elite series pod lights for our install.
Part Number: BE3EW40W



If you are installing a winch, do so at this time using the hardware provided with the winch.

We provide access for routing your winch wiring cleanly through the rear of the bumper.



INSTALLATION MANUAL

STEP 13 | With assistance, lift the bumper to the vehicle and secure it to the vehicle using the provided M10x35 hardware with a 16mm socket.

For the lower outer corners, we provide allen head hardware for a cleaner look. Use a 6mm allen bit and 17mm wrench to tighten this hardware.

Note: Assistance is recommended prevent injury and damage to the product and vehicle.



STEP 14 | Double check fitment, and all hardware is secure.



INSTALLATION MANUAL

STEP 15 | Congrats! You are finished with the install of the Jeep JT/JL Mid Width Front Bumper.

