

FS-15 STUBBY FRONT BUMPER

18+/20+ JL/JT WRANGLER/GLADIATOR

FBJL-05



TOOLS REQUIRED

- 4, 8mm Allen Bit
- 13, 15, 16, 19mm Socket
- 19mm Deep Socket
- Philips Head Screwdriver
- Trim Clip Tool

SKILL LEVEL

- Intermediate
 - 2 persons
- Little skill level required, however assistance is required for installation and removal of bumpers.

TIME REQUIRED

- 3 Hours
- Time to install this should take about three hours.

WARNINGS/CAUTIONS BEFORE STARTING INSTALLATION

Before you install this kit – Read and understand all instructions, warnings, cautions, and notes contained in this installation instruction guide. Consult your vehicle owner's manual for proper disconnection of electrical and lifting of vehicle if required for installation of this product.

This install may require some technical skills and knowledge of basic mechanical work. If you do not feel that you are capable of performing this install please take this product to a trained professional.

After reading this guide please contact us with any questions or concerns before installing product.
Customer Service: 855-680-9595

DV8 Offroad is not responsible for any bodily injury or harm to you or your vehicle as a result of an improper install.

Proper installation of this kit required knowledge of the factory recommended procedures for removal and installation of original equipment components. We recommend that the factory shop manual and any special tools needed to service your vehicle be on hand during the installation. Installation of this kit without proper knowledge of the factory recommended procedures may affect the performance of these components and the safety of the vehicle

- Always wear eye protection when operating power tools

Inspect all contents of this package to make sure product is not damaged and all installation hardware has been included. If parts are missing from kit, please be prepared to provide the following information

1. Name of purchase location
2. Bar Code on side of box
3. Date above bar code
4. Date inside box cover



INSTALLATION **MANUAL**

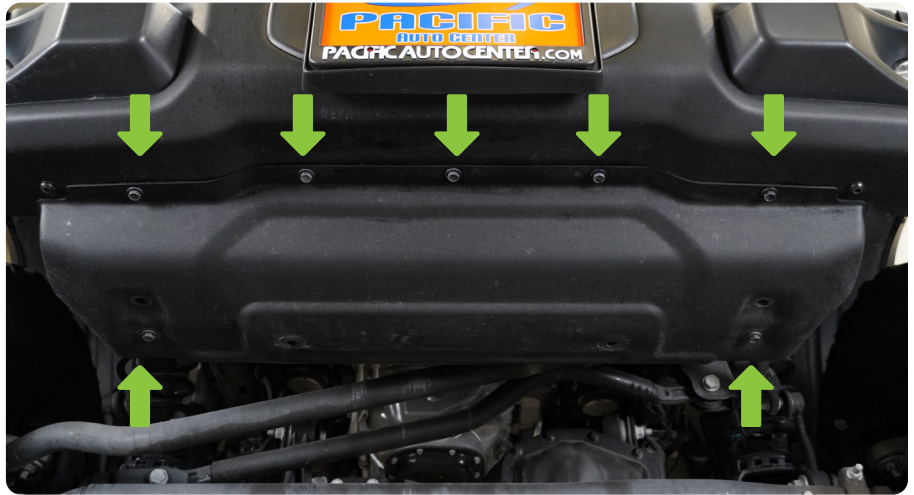
STEP 1 | *UNINSTALL OF FRONT BUMPER*

Using a push pin removal tool, remove the two push pins securing the plastic trim piece under the grille and behind the bumper.



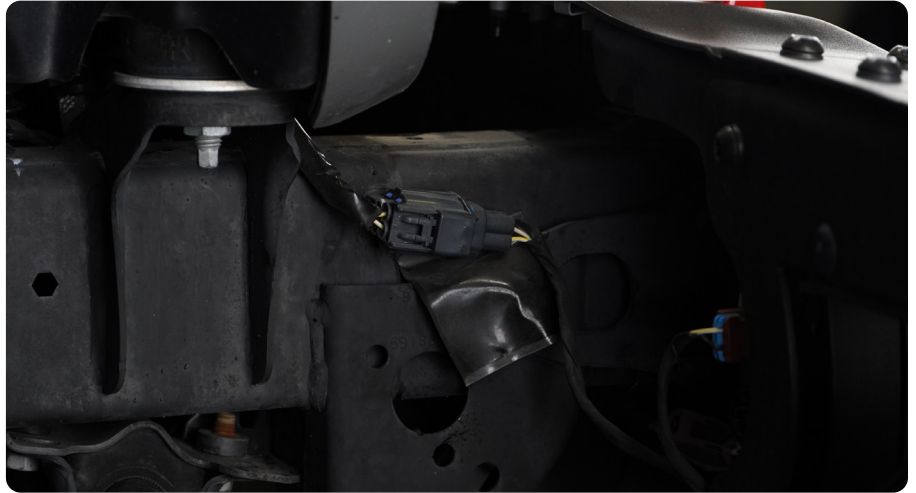
INSTALLATION MANUAL

STEP 2 | Using a 13mm socket, remove the seven bolts securing the skid plate to the vehicle, and set off to the side.



INSTALLATION MANUAL

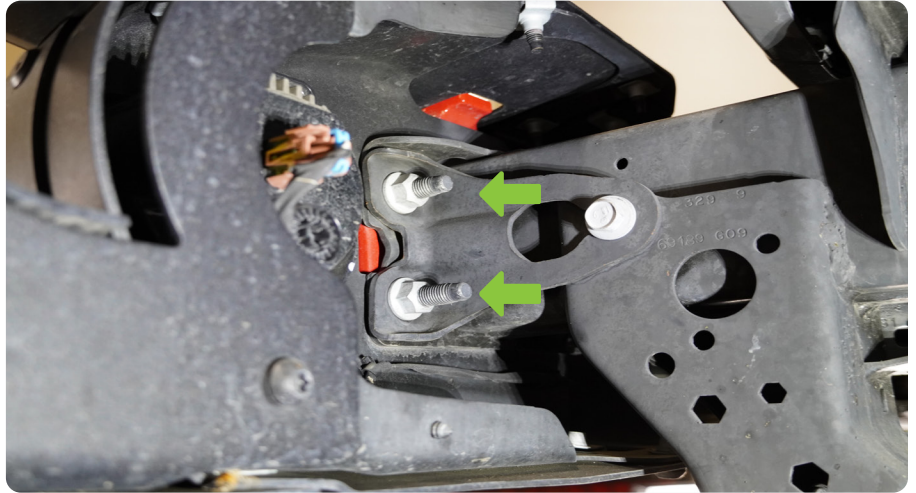
STEP 3 | Disconnect the fog lights by unplugging the wiring connectors located on passenger frame rail directly behind the bumper.



INSTALLATION MANUAL

STEP 4 | Using a 19mm deep socket, remove the eight nuts securing the bumper, located directly behind it. Once all nuts are removed, pull bumper from the vehicle and set off to the side.

Note: Once nuts are removed, bumper can become loose and fall. Ensure bumper is secure. Assistance is recommended to prevent injury and damage to the vehicle or product.

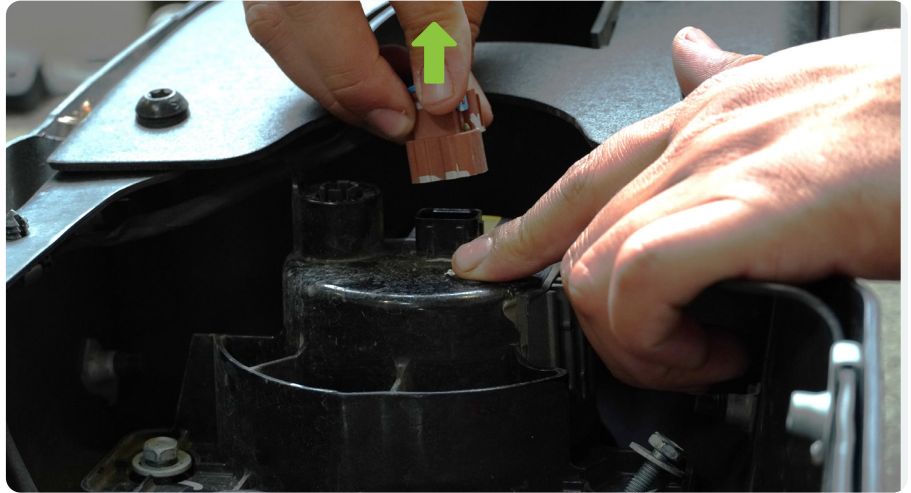


STEP 5 | At this point, frame rails should be visible and the vehicle should be ready for installation of an aftermarket bumper.



INSTALLATION MANUAL

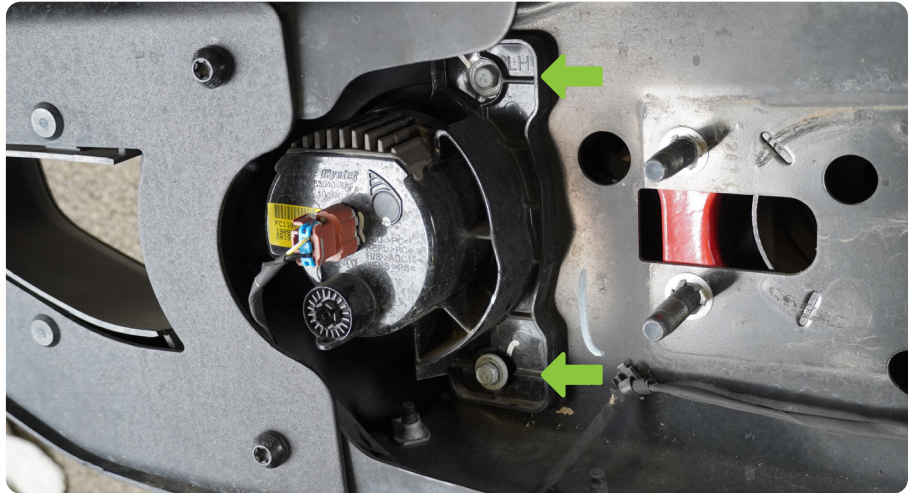
STEP 6 | Disconnect the wiring connector from the fog lights by pressing the release tabs and pulling.



STEP 7 | Remove the fog lights from the factory bumper and set them to the side for installation on the DV8 bumper.

Due to variations in design of the fog light, the tool required, and the number of fasteners to remove may vary.

Once the fog lights are removed, use a trim clip tool to remove the clips securing the foglight wiring to the vehicle. Remove the wiring and set off to the side for installation on the DV8 bumper.



INSTALLATION MANUAL

Begin by unpacking all items and inspecting for missing pieces or damage. If you have any concerns, please contact the company the product was purchased from. Extra hardware may be included with the hardware kit.

HARDWARE INCLUDED

- | | |
|-----------------------|----------------------|
| (2) M10x35 Hex Bolts | (2) M6x16 Allen |
| (8) M10 Flat Washer | (2) M6 Spring Washer |
| (8) M10 Spring Washer | (2) M6 Flat Washer |
| (6) M10 Nuts | (8) M4x20 Philips |
| (2) M12x30 Allen | (8) M4 Split Washer |
| (4) M12 Flat Washers | (8) M4 Flat Washer |
| (2) M12 Nylon Nuts | (8) M8 Nuts |



STEP 8 | Install the fairlead plate onto the bumper using the provided M12 hardware with a 19mm socket and an 8mm allen bit.



INSTALLATION MANUAL

STEP 9 | Install the provided the auxiliary light mounting tabs using the provided M6 hardware with a 4mm allen bit.

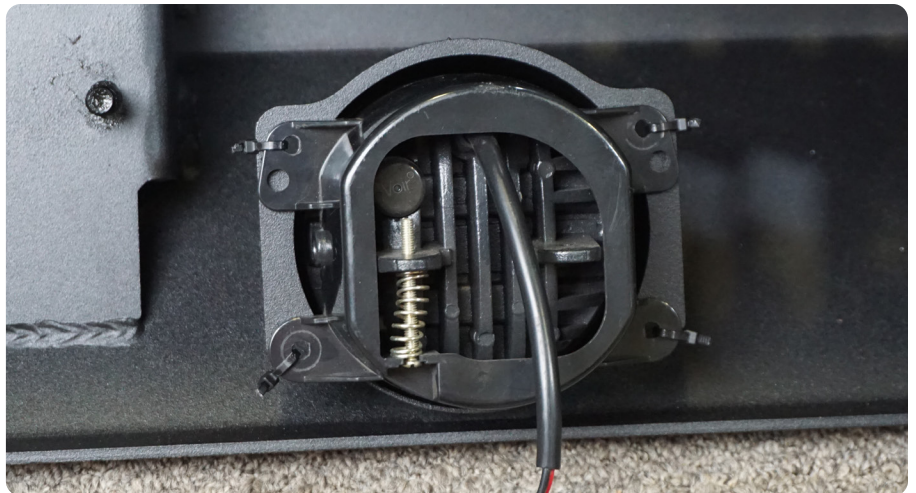
These are reversible and can be installed so the lights will mount above or below the bar.



INSTALLATION MANUAL

STEP 10 | Install the factory fog lights using the provided M4 hardware with a philips head screwdriver.

It is also possible to mount the fog lights using zip ties if desired.



INSTALLATION MANUAL

STEP 11 | With assistance, lift the bumper to the vehicle and align the studs on the bumper with the mounting plate.

Secure the bumper using the provided M10 hardware with a 16mm socket.

The upper inner corners of the mounts will take a bolt with a washer and split washer, and the rest will take a split washer, flat washer, and nut.

Note: Assistance is recommended to prevent injury and damage to the product or vehicle.



INSTALLATION MANUAL

STEP 12 | If you are installing a winch, do so at this time using the hardware provided with the winch.



STEP 13 | If you are installing a fairlead, do so at this time using the hardware provided with the fairlead.

For our install we are using the DV8 Pocket Fairlead.

Part Number: WBPF-01



INSTALLATION MANUAL

If you are installing pod lights, do so at this time using the hardware provided with the lights.

For our install we are using (2) DV8 3" Elite Series Amber Pod Lights
Part Number: BE3EW40W-A



STEP 14 | Congrats! You are finished with the install of the 18+/20+ JL/JT Wrangler/Gladiator FS-15 Series Bumper!

