

SPEC SERIES FRONT BUMPER

19+ DODGE RAM 1500
FBDR1-06



TOOLS REQUIRED

- 10, 13, 21, 22, and 19mm sockets
- 22, 18mm wrenches
- Trim pry tool
- #8 Allen Bit
- Cutters
- Safety Glasses

SKILL LEVEL

- Novice/Intermediate
 - 2 persons
- Little skill level required, additional help is required.

TIME REQUIRED

- 4 Hours
- Time to install this should only take about 4 hours.

WARNINGS/CAUTIONS BEFORE STARTING INSTALLATION

Before you install this kit – Read and understand all instructions, warnings, cautions, and notes contained in this installation instruction guide. Consult your vehicle owner’s manual for proper disconnection of electrical and lifting of vehicle if required for installation of this product.

This install may require some technical skills and knowledge of basic mechanical work. If you do not feel that you are capable of performing this install please take this product to a trained professional.

After reading this guide please contact us with any questions or concerns before installing product.
Customer Service: 855-680-9595

DV8 Offroad is not responsible for any bodily injury or harm to you or your vehicle as a result of an improper install.

Proper installation of this kit required knowledge of the factory recommended procedures for removal and installation of original equipment components. We recommend that the factory shop manual and any special tools needed to service your vehicle be on hand during the installation. Installation of this kit without proper knowledge of the factory recommended procedures may affect the performance of these components and the safety of the vehicle

- Always wear eye protection when operating power tools

Inspect all contents of this package to make sure product is not damaged and all installation hardware has been included. If parts are missing from kit, please be prepared to provide the following information

1. Name of purchase location
2. Bar Code on side of box
3. Date above bar code
4. Date inside box cover



INSTALLATION MANUAL

Begin by unpacking all items and inspecting for missing pieces or damage. If you have any concerns, please contact the company the product was purchased from. Extra hardware may be included with the product.

HARDWARE INCLUDED

- | | |
|----------------------------------|------------------------------|
| (26) M14x35mm Bolts | (4) Nut Clips |
| (26) M14 Lock Nuts | (2) Countersunk Washers |
| (52) M14 Flat Washers | (6) M12 Flat Washers |
| (4) M12x35mm Bolts | (4) M6x20mm Allen head Bolts |
| (2) M12x35mm Tapered Allen bolts | (4) M6 Lock Washers |
| (4) M12 Split Washers | (8) M6 Flat Washers |



STEP 1 | Remove the inner fenders from both sides using a 10mm socket.

Gain access to the bumper wiring harness on the driver side.

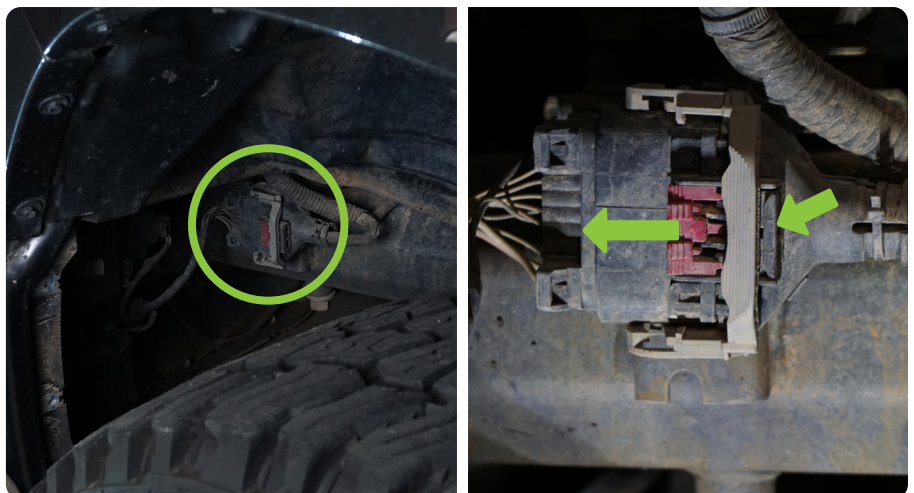
Tech Tip: Turn the wheels in and out for easier access to inner fender screws.

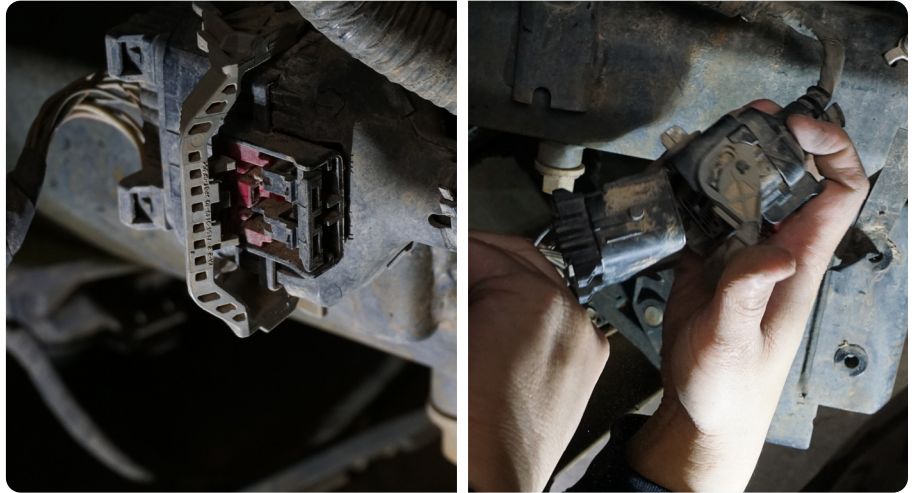


STEP 2 | Disconnect the bumper wiring harness.

Pull the red lock clip back and depress the black push clip.

While depressing the black clip pull back the gray handle to release wiring harness. (See next page)





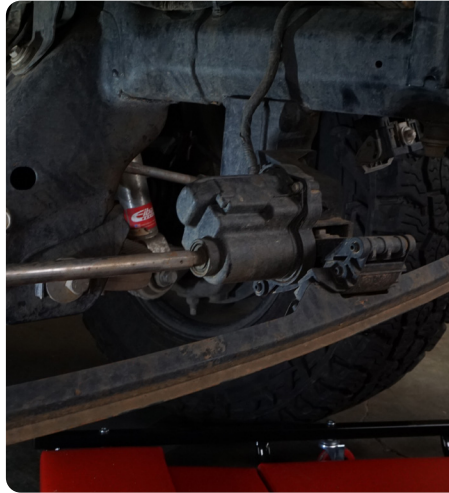
STEP 3 | Using a 18mm socket/wrench, remove the six bumper mounting bolts (3 on each side).

Remove the factory bumper. It may be necessary to angle the bumper slightly as you pull out for the rubber trim to clear the grille, and trim under the headlight.



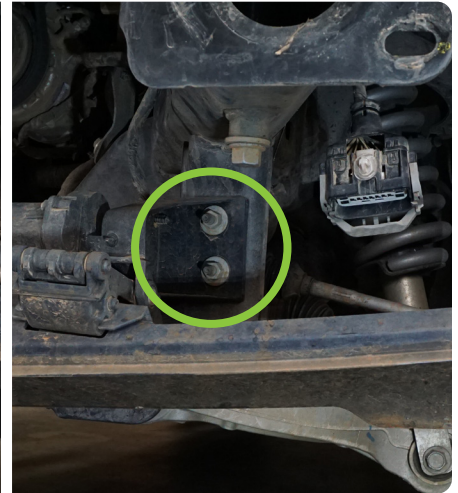
INSTALLATION MANUAL

STEP 4 | Disconnect the air dam motor by pressing the release clip and pulling.



STEP 5 | Use a 13mm socket to remove the (4) air dam mounting bolts.

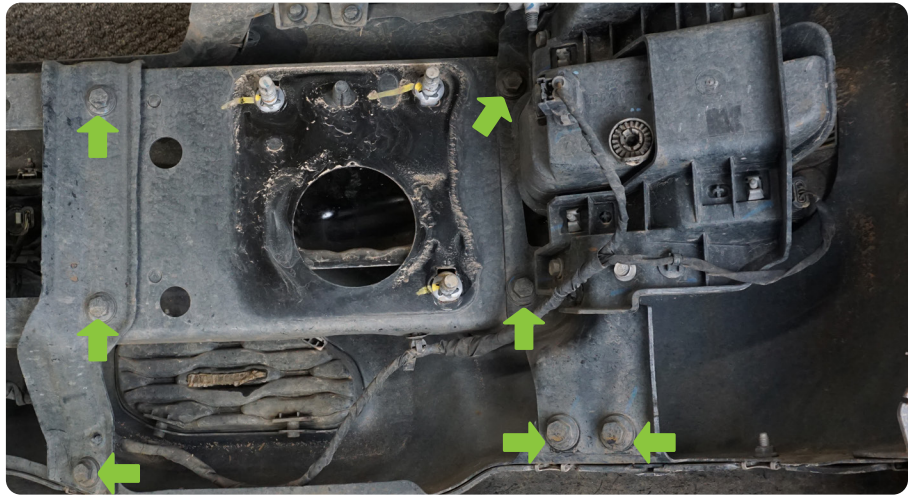
Remove the factory Air Dam.



INSTALLATION MANUAL

STEP 6 | Remove the (14) fog light/ bumper support bolts using a 13mm socket.

Disconnect the fog lights at this time.



STEP 7 | Remove the (3) additional fog light bolts on the top of the fog light housing and then remove the fog lights.



STEP 8 | Remove the parking sensors from the bumper bezels by gently prying the two tabs outward and pulling up on the sensor.

Tech Tip: Slide the bumper center support to the left and right to gain access to all parking sensors.





STEP 9 | Remove the sensor bezels by using a pry tool to press in the locking tabs at the side and pressing the bezel out.

Keep bezels in order as they will be installed in the same position they were removed.



STEP 10 | Use a trim pry tool to remove the bumper wiring harness.



INSTALLATION MANUAL

STEP 11 | Using the provided M12 hardware, 21mm socket and 22mm socket secure the bumper wings to the bumpers center section.



STEP 12 | If you are planning to run a light bar install the light bar now using the provided M6 hardware, light-bar brackets and hardware provided with the light-bar.



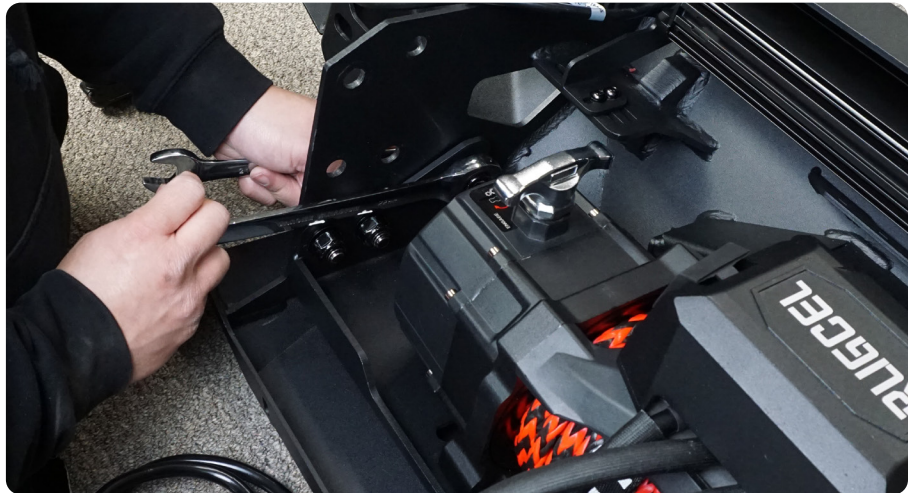
STEP 13 | If you are planning to run a winch, install the winch onto the provided winch plate using the hardware provided with the winch.



INSTALLATION MANUAL

STEP 14 | Use the provided M12 hardware, 21mm socket and 22mm wrench to mount the winch and winch plate to the bumper.

Install the winch fair-lead on to the bumper using the hardware provided with fair-lead.



STEP 15 | Install provided Nut-clips on to the bumper mounting brackets.



STEP 16 | Use the provide M12 hardware, a 21mm socket and 22mm wrench to secure bumper mounting brackets to the bumper.



INSTALLATION MANUAL

STEP 17 | Using cutters, trim the locking tabs on the parking sensor bezels.



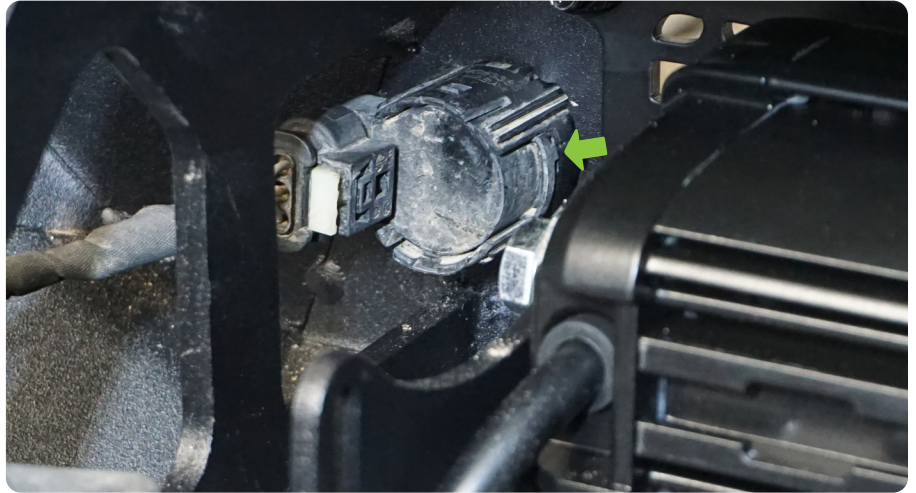
STEP 18 | Install the factory sensor bezel into the DV8 Front Bumper in the same order they were removed.



INSTALLATION MANUAL

STEP 19 | Install the parking sensor back into the sensor bezel. Ensure tab on sensor aligns with notch in bezel.

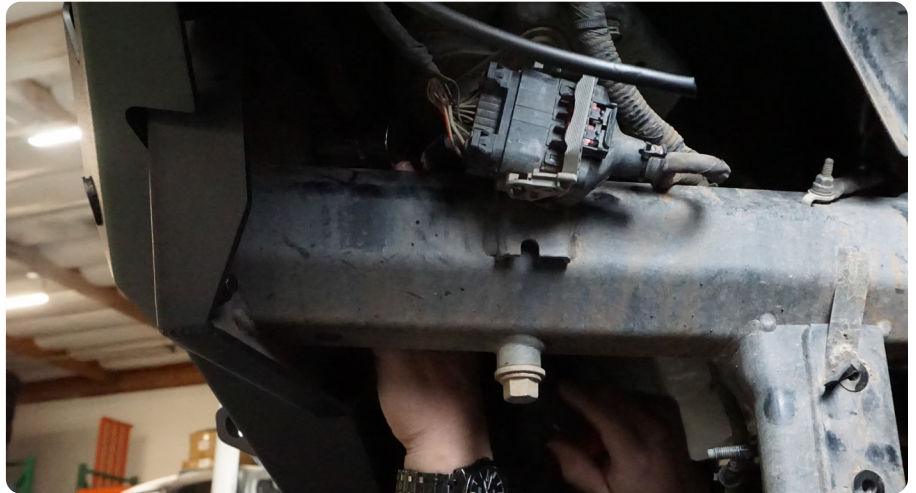
Route the factory wiring harness as shown using provided zip tie tabs



INSTALLATION MANUAL

STEP 20 | With assistance lift the bumper into place, using the provide M12 hardware, 19mm socket secure the bumper to the truck.

Through bolt the lower mounting hole using the provided M12 tapered headed bolts, nylon lock nuts, #8 Allen bit and a 19mm socket.



STEP 21 | Reconnect the bumper wiring harness to the vehicles main wiring harness and lock it in place.



INSTALLATION MANUAL

STEP 22 | Ensure all hardware is secure all loose wires have been zip tied up. Double check fitment

Congratulations the install of FBDR1-06 is now complete.

