

AIR COMPRESSOR MOUNT

2018+/2020+ JL/JT WRANGLER/GLADIATOR
CMJL-01



TOOLS REQUIRED

- 4mm Allen Bit
- 10mm Wrench
- 10mm Socket
- Trim Clip Tool
- Zipties (Optional)

SKILL LEVEL

- Novice/Intermediate
 - 1 (you) to 2 persons
- Little skill level required, you can easily install it by yourself however, additional help will be useful.

TIME REQUIRED

- 1.5 Hour
- Time to install this should only take about an hour and a half.

WARNINGS/CAUTIONS BEFORE STARTING INSTALLATION

Before you install this kit – Read and understand all instructions, warnings, cautions, and notes contained in this installation instruction guide. Consult your vehicle owner’s manual for proper disconnection of electrical and lifting of vehicle if required for installation of this product.

This install may require some technical skills and knowledge of basic mechanical work. If you do not feel that you are capable of performing this install please take this product to a trained professional.

After reading this guide please contact us with any questions or concerns before installing product.
Customer Service: 855-680-9595

DV8 Offroad is not responsible for any bodily injury or harm to you or your vehicle as a result of an improper install.

Proper installation of this kit required knowledge of the factory recommended procedures for removal and installation of original equipment components. We recommend that the factory shop manual and any special tools needed to service your vehicle be on hand during the installation. Installation of this kit without proper knowledge of the factory recommended procedures may affect the performance of these components and the safety of the vehicle

- Always wear eye protection when operating power tools

Inspect all contents of this package to make sure product is not damaged and all installation hardware has been included. If parts are missing from kit, please be prepared to provide the following information

1. Name of purchase location
2. Bar Code on side of box
3. Date above bar code
4. Date inside box cover



INSTALLATION MANUAL

UNINSTALL DRIVER SIDE INNER FENDER

STEP 1 | Use a trim clip tool to remove the clips on interior of the inner fender.

Use a trim clip tool to remove the clips running along the outside, securing the inner fender to the vehicle.

Use a 10mm socket to remove the bolts along the top and at the front of the inner fender.

Remove inner fender by pulling down, then out

Note: CMJL-01 is not compatible with factory inner fenders. If you are running aftermarket inner fenders, they will be installed after completing this installation.

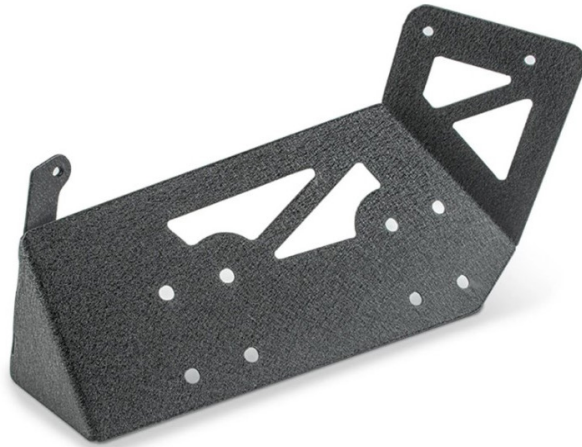


INSTALLATION MANUAL

Begin by unpacking all items and inspecting for missing pieces or damage. If you have any concerns, please contact the company the product was purchased from. Extra hardware may be included with the product.

HARDWARE INCLUDED

- (7) M6x20 Allen
- (7) M6 Lock Washers
- (14) M6 Flat Washers
- (7) M6 Nuts



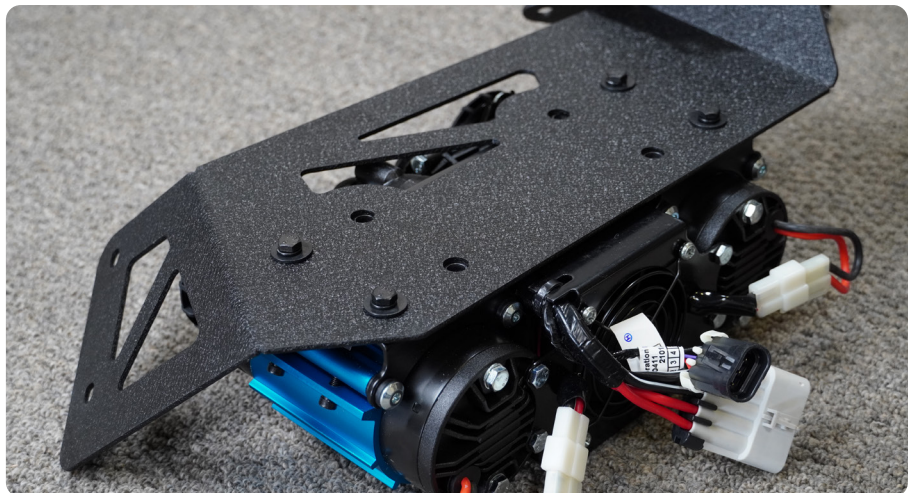
STEP 2 | Remove the plastic clips securing the wiring harness to this bracket. These holes will be utilized to mount the compressor bracket.



STEP 3 | Prior to installing the compressor on the mount, prepare the compressor for installation. Needs may differ depending on your application.

For our installation, we are using the quick disconnect hose system on an ARB Dual Air Compressor, which we installed on the compressor before mounting the compressor on the bracket.

Install the compressor on the mount using the hardware provided with the compressor.



INSTALLATION MANUAL

STEP 4 | We recommend connecting the wire harness provided by ARB prior to installation and feeding the wiring up through the engine bay. Connecting this harness after installation may be difficult.

Install the mount on the vehicle using a 4mm allen bit and 10mm wrench and provided M6 hardware.

Refer to the manufacturers instructions for wiring your air compressor.



STEP 5 | Congrats! You are finished with the install of the 2018+/2020+ JL/JT Wrangler/Gladiator.

